



NEBRASKA MASTER GARDENER Volunteer Program 50 Years of Growing

Extension Master Gardeners are volunteers trained through University Extension programs across the United States, to provide research-based horticultural information to the public. They complete intensive training in horticulture science and, in exchange, volunteer their time to educational outreach to their community.

History

The Washington State University Extension Master Gardener program began in 1973 in King and Pierce counties, created by Agents Dr. David Gibby and Bill Scheer to address surging public demand for gardening information. Facing high volumes of plant-related calls, they developed a volunteer training program that became a national and international model for research-based, sustainable horticultural education.

In Nebraska, Extension professionals were facing the same issues and a similar plan for training volunteers was underway. Nebraska Extension organized their own Extension Master Gardener Volunteer (EMGV) program statewide in 1976 and it has been growing ever since.

Training

When accepted into the Extension Master Gardener Program, interns receive 40 hours of training from Nebraska Extension professionals. Core training topics include botany, turfgrass, soil science, plant pathology and integrated pest management.

Volunteering

In exchange for 40 hours of training, Extension Master Gardener interns are required to volunteer 40 hours of
continued on next page

By Mary Jane Frogge, Horticulture Extension Associate and County Extension Master Gardener Volunteer Coordinator



New and returning Extension Master Gardener Volunteers receive training each year. Pictured are participants learning about integrated pest management in a small group discussion.



In Lancaster County, Extension Master Gardeners are encouraged to join a committee, such as the compost committee, in which members teach the public about composting during demonstrations in the spring and fall.



Extension Master Gardener Volunteers help at Lincoln's Sunken Gardens. Pictured is Rita Beck planting annual flowers.

Lancaster County 4-H
 Nebraska Extension in Lancaster County
 444 Cherrycreek Road, Suite A
 Lincoln, Nebraska 68528-1591

CHANGE SERVICE REQUESTED

Non-Profit Organization
 U.S. Postage Paid
 Permit No. 36
 Omaha, Nebraska

Master Gardener Program

from previous page

their time to Nebraska Extension programs and activities. Some of these opportunities include:

- Teaching composting demonstrations.
- Planting community gardens.
- Answering telephone gardening questions.
- Teaching youth how to garden.
- Hosting a booth at local events, such as garden shows.
- Raising vegetables at donation gardens.
- Judging exhibits at the county or state fair.

Education Outreach

In 2025, 91 EMGVs participated in the Lancaster County program and volunteered for 4,656 total hours! As a result of this commitment to education and volunteering, they become a valued resource to their neighborhood and community.

ASK A MASTER GARDENER

You can ask Master Gardeners yard & garden questions during the growing season via phone (402-441-7180) or walk-in at the Extension office, Monday–Friday, 9 a.m.–12 p.m. (444 Cherrycreek Road, Suite A, Lincoln). You can also bring in specimens for plant or disease identification and management recommendations.

Did you know there is an International Master Gardener Conference? The next one will be in 2027.



Members of the youth education committee staff a booth at Discovery Days on UNL East Campus, providing education and hands-on activities.



Several Extension Master Gardeners assist with 4-H horticulture exhibits at the Lancaster County Super Fair. Pictured is Eve Hoffman interviewing a 4-H youth about her eggplants.



Members of the People's City Mission Garden team plan, plant and harvest vegetables and herbs at the garden, which are then used in the PCM kitchen.



Extension Master Gardener Volunteers answer gardening questions at the Lancaster County Extension office April through September. Pictured are Elaine Booth and Susan Fertig.



Event Committee members plan activities or events for EMGVs, like the flower arranging event pictured.

Master Gardeners Share Why They Volunteer

“My favorite part about volunteering with Nebraska Extension is having the opportunity to do different things. Such as building raised garden beds and educational game boards; interacting with people at events and education sessions; and utilizing my organizational skills as a committee chair.”

—Gary Wells



“Volunteering is an educational experience. I’m always learning new things, either through training, answering the phone at the Extension office, from my fellow volunteers or even the kids I work with. It feels good to share your knowledge and to work alongside others who have a similar interest. It feels good to know you’re helping others in your community!”

—Shari Bitney



“My favorite volunteer opportunity is working with children, especially the younger ones. Their excitement and curiosity energizes me and reminds me how much I enjoy gardening. It’s such a pleasure to be able to share my passion and to continue to learn myself.”

—Lori Swiatek



Discovery Days + Farmers Market

10 a.m.–1 p.m. | East Campus Loop

JUNE | **JULY** | **AUG**
13 | **11** | **8**

- Locally Produced Goods
- Live Music • Food Trucks
- Activities for All Ages
- Backyard Farmer Garden Tours



<https://discoverydays.unl.edu>

Part 107 Drone Course

Nebraska Extension is offering Part 107 Remote Pilot Exam Prep Course at various locations across the state to prepare participants to pass the FAA Aeronautical Knowledge Exam required to earn a Remote Pilot Certificate, commonly known as a drone license. The 1-day course will be presented at the Nebraska Extension of Lancaster County conference rooms, 444 Cherrycreek Road, Suite A, Lincoln on Fridays, June 26, Aug. 21, Nov. 6, and Dec. 11 from 9 a.m. to 5 p.m. Registration is required with a \$275 registration fee by the Monday before the training. Details and registration link are at <https://go.unl.edu/Part107Course>. If questions, contact Dirk Charlson at dirk.charlson@unl.edu or 402-460-0742.



Wednesdays
12 p.m.

2026 GROBigRed

Join the experts from Nebraska Extension to learn and ask questions about:

June 10 — Beyond Pollinators: Predatory & Beneficial Bugs • *Ian Peterson*

July 8 — Recognizing Tree Hazards and Non-Hazards • *John Fech*

Aug. 12 — Composting for Small-Scale Growers • *Katja Koehler-Cole*

Sep. 9 — Fall Garden Preparation • *Nicole Stoner*

Oct. 14 — Spring Flowering Bulbs • *Scott Evans & Mary Jane Frogge*

Register at

<https://hles.unl.edu/grobigrad>



GARDEN GUIDE THINGS TO DO THIS MONTH

By Mary Jane Frogge, Extension Associate in Lancaster County

For fall harvest of lettuce, radish, carrots, beets, turnips, kale and spinach, sow seeds in late July to early August.

Check the soil moisture of container-grown vegetables and flowers daily. As the temperature rises, some plants may need water twice a day.

A brown or grayish cast over a lawn can be caused by dull or improperly adjusted mower blades that shred grass rather than cut it.

Leftover vegetable and flower seeds may be stored in a cool, dry location to be saved for planting next year.

Start a gardening notebook. Keep all your gardening records in this one location.

When you buy nursery plants that are container grown, check the root balls and make sure they are not bound too tightly. A mass of circling roots will stay that way even after it is planted.

Remove old flower heads from annual bedding plants to keep them blooming.

Use bark mulch, like cedar, around young trees to protect them from lawn mower damage.

Weed removal is important for many reasons. It conserves moisture, conserves nutrients in the soil and helps prevent the spread of disease and insects.

Cutting flowers is best done with sharp shears or a knife which will help avoid injury to the growing plant. A slanting cut will expose a larger absorbing surface to water and will prevent the base of the stem from resting on the bottom of the vase. It is best to carry a bucket of water to the garden for collecting flowers, rather than a basket.

Tall flowers should be staked to prevent damage by wind. Use stakes which are large enough to support the plant but are not too conspicuous. Use soft twine or twist ties to secure.

Store pesticides in a safe place in their original containers, away from children and pets. Use pesticides carefully in your garden. Read the labels and follow the directions. The warnings and precautions are for your protection.

A Fresh Take on Summer Treats

By Alyssa Havlovic, MS, RDN, ACSM EP-C, Extension Educator in Lancaster County

Summer and sweet treats often go hand in hand, like ice cream on a hot day, popsicles by the pool or s'mores around a campfire. These foods are part of what makes the season fun and memorable. Rather than thinking about summer treats as something to limit or avoid, it can be helpful to rethink how they fit into an overall balanced approach to eating.

It's important to remember that all foods can have a place in a healthy lifestyle. Labeling foods as "good" or "bad" can take the joy out of eating and may even lead to overeating later on. Instead, aim for balance. Enjoy your favorite treats while also making room for nourishing foods like fruits, vegetables, lean proteins and whole grains throughout the day.

Practice Mindful Eating

One simple strategy is to be more mindful when enjoying treats. Eliminate distractions while eating by turning the TV off, setting your phone down and sitting at a table. Pause between bites. Setting your utensils down after each bite helps to slow down and revel in the experience. Engage your senses and savor the flavor as you enjoy a treat, and pay attention to when you feel satisfied.



Alternative Sweet Treats

Get creative with healthier, refreshing options that still satisfy your sweet tooth. Frozen fruit like grapes, bananas or berries can be a naturally sweet and hydrating alternative. Homemade fruit popsicles or blending fruit into a smoothie can offer a cool, nutrient-dense treat. Grilled peaches, pineapple or pears topped with a dollop of yogurt or a sprinkle of cinnamon makes a nutritious dessert. Enjoy a homemade yogurt bark by spreading Greek yogurt on a baking sheet, topping it with berries and nuts, then freezing and breaking into pieces for a delicious treat.

Size Matters

Portion control also plays a role. You don't always have to skip dessert altogether. Sometimes a smaller portion is all you need to feel satisfied. Simple practices such as eating ice cream out of a small bowl instead of straight from the container or choosing a single popsicle instead of multiple can help you enjoy the experience without overdoing it.

Give yourself permission to enjoy the moment. Food is not just about health and nutrition, it's also about connection, celebration and tradition. Whether it's a family ice cream outing or a backyard barbecue, these experiences create core memories and bring people together.

This summer, instead of cutting out all your favorite treats, try shifting your mindset. With a little balance and mindfulness, you can enjoy all the flavors of the season while still maintaining your overall health.



RECIPES OF THE MONTH

By Alyssa Havlovic, MS, RDN, ACSM EP-C, Extension Educator in Lancaster County

Looking for a nutritious treat to enjoy this summer? Try these frozen options to satisfy your summertime sweet cravings!

YOGURT FREEZER POPS

(Yield: 12 servings)

- 6 ounces frozen orange juice concentrate*, thawed
- 2 cups yogurt, low-fat vanilla*
- 12 (3 ounce) paper cups
- Aluminum foil
- 12 food grade wooden sticks

1. Wash hands with soap and water.
2. In a medium bowl, combine thawed juice concentrate and yogurt. Stir until smooth.
3. Place paper cups close together on a baking sheet.
4. Pour juice/yogurt mixture into paper cups.
5. Cover the cups with a sheet of aluminum foil.
6. Insert stick for each freezer pop by making a slit in foil over the center of each cup. The aluminum foil serves to keep the sticks in place as the juice/yogurt mixture freezes.
7. Freeze freezer pops until firm.
8. To serve, run warm water on the outside of each cup to loosen each freezer pop from the cup.
9. Store leftovers in a sealed container in the freezer.

*Note: Any flavor of juice concentrate or yogurt can be used.

Nutrition Information: Serving Size (1/12 of recipe): Calories: 50; Total Fat: 0.5g; Saturated Fat: 0g; Cholesterol: 0mg; Sodium: 20mg; Total Carbohydrates: 9g; Fiber: 0g, includes 2g Added Sugars; Protein: 2g; Calcium: 10%; Iron: 0%; Potassium: 4%

Nutrition Software Used: ESHA Food Processor

Source: Eating Smart Being Active, Colorado State University



YUMMY CHOCO-BANANA "ICE CREAM"

(Yield: 1 serving)

- 1 frozen peeled banana, cut into chunks
- 1–2 teaspoons cocoa powder (optional)
- 1 teaspoon peanut butter (optional)

1. Wash hands with soap and water. Place banana chunks into a small food processor or blender. Blend on high until smooth and creamy.
2. Add cocoa powder and peanut butter, if desired. Continue to blend until mixed.
3. Enjoy immediately.

Note: This "ice cream" is best eaten right away, but you can store it in an airtight container in the freezer for up to 3 months.

Nutrition Information: Calories: 140; Total Fat: 3.5g; Saturated Fat: 1g; Cholesterol: 0mg; Sodium: 25mg; Total Carbohydrates: 29g; Fiber: 4g, includes 0g Added Sugars; Protein: 3g; Calcium: 0%; Iron: 6%; Potassium: 10%

Nutrition Software Used: ESHA Food Processor



Photo by Corni Wells

Assessing Spring Freeze Damage in Wheat and Alfalfa

By John Nelson, Extension Educator in Lancaster County

The frost event that occurred April 18–19 across much of the wheat-producing areas of western and central Nebraska also moved into spots in the southeast region of the state, and there is evidence of freeze damage in both wheat and alfalfa in our area.

The Nebraska Mesonet station at Wilber (Saline County) reported a five-hour period of temperatures below 32°F in the early morning of April 18. The lowest temperature reported at Wilber was approximately a two-hour period at 27°F. Similar temperatures were recorded at the Firth (Lancaster County) Mesonet station. At Firth, there was approximately a four-hour period below 32°F with a two-hour period at 28°F.

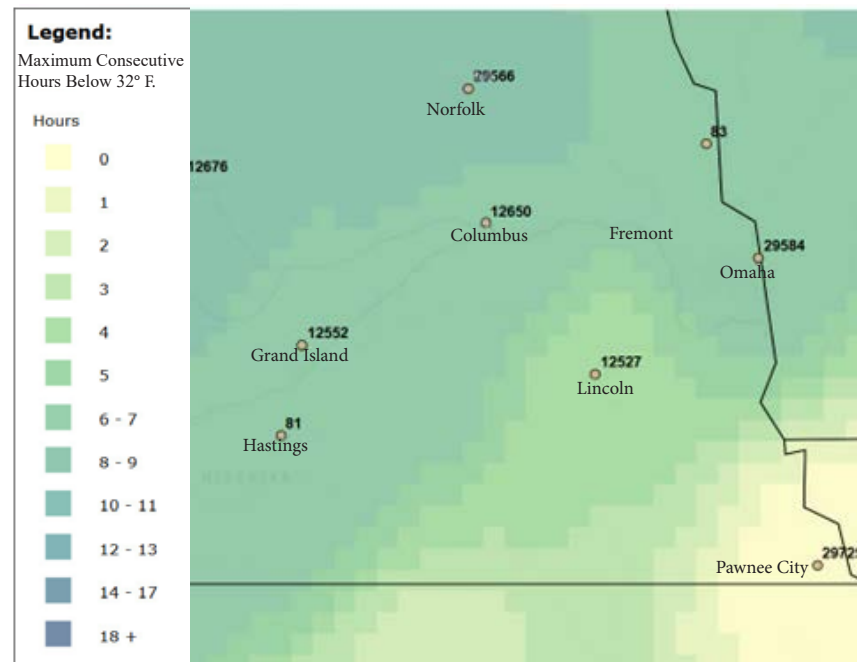
We have had numerous reports of freeze damage to wheat and cover crops across Southeast Nebraska. The abnormal weather patterns that resulted in a very mild winter and limited snow

cover have put wheat development ahead of normal expectations, and much of our wheat in Southeast Nebraska was in the boot or early heading stage at the

time of the freeze event. University of Nebraska–Lincoln CropWatch released a comprehensive article on assessing wheat-freeze damage across

the state. <https://cropwatch.unl.edu/assessing-freeze-injury-wheat>. Wheat producers are encouraged to read this article and carefully scout fields before making management decisions.

It is possible that this light freeze event also affected some alfalfa fields in the region. In general, the light frost we experienced in the Southeast region may only burn exposed leaves. A moderate freeze (mid-20s for several hours) can kill the upper stem and terminal buds. However, plants often do regrow from lower axillary buds or from crown buds after a moderate freeze. This will delay growth and, as a result, first cutting will be delayed as well. University of Nebraska–Lincoln CropWatch also released a comprehensive article on assessing freeze damage in alfalfa: <https://cropwatch.unl.edu/assessing-spring-freeze-damage-alfalfa-wait-you-cut>. Alfalfa growers are encouraged to scout fields, especially fall and spring seedings, and fields under drought conditions.



Map of cumulative hours below freezing from April 5 to May 4.

Baby Pollinators Need Food Too!

By Kait Chapman, Extension Educator in Lancaster County

Summer is upon us, and with it comes Pollinator Week! A seven-day celebration across North America, pollinator week is observed from June 22–28, 2026. This year's national theme is "Life on a Leaf: Celebrating Caterpillars and Host Plants," which highlights the importance of feeding not only adult pollinators like butterflies but also their young caterpillar counterparts.

Interested in starting a pollinator garden or planting some extra food for these pre-pollinators? Here are some common caterpillars and their host plants to keep an eye out for.

FOR MORE INFORMATION

Learn more about National Pollinator Week at: www.pollinator.org/pollinator-week.



Monarch Butterfly Caterpillar (*Danaus plexippus*)



Monarch Butterfly (*Danaus plexippus*)

Host Plant: Milkweed (*Asclepias* spp.)



Black Swallowtail Butterfly Caterpillar (*Papilio polyxenes*)



Black Swallowtail Butterfly (*Papilio polyxenes*)

Host Plant: Herbs in the carrot family (*Apiaceae*)



Painted Lady Butterfly Caterpillar (*Vanessa cardui*)

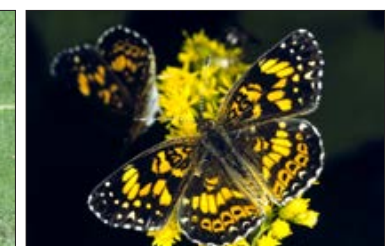


Painted Lady Butterfly (*Vanessa cardui*)

Host Plants: Thistles (*Cirsium* spp.), hollyhocks (*Alcea*), mallow (*Malva*) and more.



Gorgone Checkerspot Butterfly Caterpillar (*Chlosyne gorgone*)



Gorgone Checkerspot Butterfly (*Chlosyne gorgone*)

Host Plants: Coneflowers, sunflowers and black-eyed Susans

All insect photos provided by UNL Entomology.

Celebrate Nebraska's Moths

By Kait Chapman, Extension Educator in Lancaster County

While butterflies often capture our attention with their bright colors and daytime activity, moths are equally fascinating and deserve a closer look. With National Moth Week approaching (July 18–26), it's the perfect time to celebrate the incredible diversity of moths found across Nebraska.

This annual event also offers a great opportunity to get involved in citizen science by photographing and documenting moth species in your area. Here are just a few of the unique and remarkable moths you might encounter in our state.



White-lined Sphinx
(*Hyles lineata*)



Luna Moth
(*Actias luna*)



Ailanthus Webworm Moth
(*Atteva aurea*)



Squash Vine Borer
(*Eichlinia cucurbitae*)



Virgin Tiger Moth
(*Apantesis virgo*)



Plume Moth
(Family: *Pterophoridae*)



Snowberry Clearwing
(*Hemaris diffinis*)



Polyphemus Moth
(*Antheraea polyphemus*)

All photos provided by UNL Entomology.

To learn more about potential Moth Week events in your area or how to submit moth photos for identification, visit <https://nationalmothweek.org>.

STEAM Imagination Guides 2026 – Unearth a Story

By Jaci Foged, Extension Educator in Lancaster County

Keeping children engaged and learning through fun and playful experiences during the summer months is important. Reading books with children can spark excitement around a topic and encourage them to put what they have heard or read into action. This action often emerges through play, which can lead children to experiment, create and feel inspired to try something new.

Collaborative Summer Library Program

The Collaborative Summer Library Program (CSLP) is a national non-profit organization that has been providing summer programming resources since 1987. Each year, CSLP selects a theme, and Nebraska Extension develops reading guides to match that theme for use in libraries across Nebraska. Two sets of resources are created annually:

- Extension's Early Childhood Team focuses on infants, toddlers and preschoolers with the "STEAM Imagination Guides."

- Extension's 4-H Team develops "Reading Connection Resources" to support school-aged children in kindergarten through sixth grade.

This program provides all caregivers (early childhood professionals and parents) with books, guided questions and expanded learning resources to support literacy development, enhance relationships and to make a connection with your local library.

2026 Theme: Unearth a Story

This year's theme for the CSLP is "Unearth a Story," which focuses on paleontology and archaeology. The Early Childhood Team selected nine preschool books and three books for infants and toddlers. One of the featured books was written by a Nebraska author and highlights paleontology work currently underway in northeast Nebraska at Ashfall Fossil Beds.

Libraries across the state received a list of the books featured in this year's "STEAM Imagination Guides" program, though not every library will have all of the books available.

What Is STEAM?

STEAM stands for Science, Technology, Engineering, Art and Math. Engaging children in these subject areas provides opportunities to build math and engineering skills — such as comparing, reflecting and reasoning — while also supporting language, literacy, reading and writing development.

How to Use the Guides

The "STEAM Imagination Guides" take the guesswork out of lesson planning. The Nebraska Department of Education developed the Early Learning Guidelines (ELGs), which outline learning and development standards from birth through age five. Each activity included in the guides connects to at least one ELG, though many activities support multiple standards.

Each guide includes:

- **Conversation Starters** — questions to ask before, during or after reading to promote engagement and help children connect the story to their own lives.
- **Three Activities** — designed to

deepen learning and reflect a variety of interests and developmental needs:

- A STEAM Connection activity on the front page (the most detailed activity)
- A nature-based or outdoor activity
- A creative-arts activity

What Educators and Families Are Saying

We consistently hear that these guides are engaging, easy to use and valuable for lesson planning. The guides promote strong child engagement, clear literacy, STEAM integration and flexibility across ages and settings. One educator shared, "These are so incredible because they take the guesswork out of planning activities. I know I can go to these guides and find something that fits what I am looking for."

Get Started

We are excited for you to "dig in." Check out your local library or access the STEAM Imagination Guides and Reading Connection Resources for no cost at <https://go.unl.edu/imagination>. For CSLP, visit <https://www.cslpreads.org>.

4-H Horse Stampede Top Results



(L-R) Devin Merchant, Lyra Krutak, Lucinda Wacker and Lena Barnes earned Champion Horse Judging Senior Team and will represent Nebraska at the 4-H & FFA Western National Roundup in Colorado next January.

The Nebraska 4-H Stampede was held April 25 & 26 at the University of Nebraska–Lincoln East Campus. Many youth from across the state competed in contests, including photography, art, demonstration, public speaking, horse judging, hippology and horse quiz bowl. Complete results are at <https://4h.unl.edu/horse-stampede>. Here are the Lancaster County top and purple ribbon winners:

- **Horse Judging Senior Division Team:** ‘The Cowboy Academy’ Team – Lena Barnes, Lyra Krutak, Devin Merchant, Lucinda Wacker (champion)
- **Horse Judging Senior Division Individual:** Kathryn Weaver, Hannah Chevalier
- **Horse Judging Junior Division Team:** ‘Lancaster-Saline’ Team – Lena Gropp, Aurora Norris (4th place, blue)
- **Hippology Junior Division:** ‘Horsin’ Around’ Team – Gwendolyn Friesen and Mary Kerstin Friesen (6th place) and ‘The Gut Logic Duo’ Team – Corrine Byrne and Gracen Byrne (7th place)
- **Public Speaking Contest Senior Division:** Xavyer Bourek (reserve champion), Hannah Chevalier, Katy Weaver
- **Demonstration Contest Senior Individual Division:** Hannah Chevalier (champion, blue)
- **Art Contest 2D Senior Division:** Avery Stohs (champion), Shea Frink
- **Art Contest 2D Junior Division:** Mary Kerstin Friesen (champion and reserve champion, two entries), MacKenzie McCoy
- **Art Contest 2D Elementary Division:** Layne McCoy (champion)
- **Art Contest 3D Senior Division:** Shea Frink (reserve champion)
- **Art Contest 3D Junior Division:** Gracen Byrne
- **Photography Contest Senior Division:** Reagan Dinger (champion), Aleese Jurgens, Avery Stohs (reserve champion)
- **Photography Contest Junior Division:** Brooklyn Freier (champion), Gracie Mittan-DeBuhr (reserve champion)
- **Photography Contest Elementary Division:** Aurora Norris (reserve champion)



Stampede contestants (L-R) Corrine Byrne, Aurora Norris and Gracen Byrne preparing for their next contests.



Reagan Dinger earned Champion in the Photography Contest Senior Division with a close-up of her horse.



Mary Kerstin Friesen’s Champion Art Contest 2D Junior artwork titled “Stable Harmony.”



HEART OF 4-H VOLUNTEER AWARD

Recognizing Outstanding Volunteer Service

Scott and Carole Johnson are receiving the Lancaster County 4-H June “Heart of 4-H Award.” They have volunteered in a variety of ways. For five years, when their daughters were in 4-H, Scott and Carole served as parent helpers with the Country Pals 4-H club and the original llama club. They also helped at 4-H Council’s food stand during the Lancaster County Fair. For the past 3 years, the Johnsons have volunteered during 4-H static exhibit check-in and judging day at the Super Fair. In addition, they help a neighboring family’s four children create a wide variety of static exhibit projects such as woodworking and sewing.

Carole says, “We like being 4-H volunteers because it’s a great family-oriented organization and it’s an opportunity to teach some awesome kids life-long skills.”

Mindi Clarke is receiving the Lancaster County 4-H July “Heart of 4-H Award.” She has volunteered with the horse program for 15 years in a variety of roles:

- Organizational and horse project leader for the Mighty Lopers club.
- At the Lancaster County Super Fair, she has helped bring livestock for the Roping/Working Ranch Show and helped design trail patterns.
- Former 4-H judge.

Mindi says, “I really enjoy the kids, sharing my horses with kids who may not otherwise have a chance to learn about horses or have show/competition experiences. I love seeing the smiles on their faces and helping build their confidence.”





4-H Announcements

FOR 4-H'ERS AND VOLUNTEERS

The 4-H e-newsletter at <https://go.unl.edu/lan4hnews> has up-to-date information about upcoming 4-H opportunities.



HORSE JUDGING CONTEST,

MAY 30 — The Lancaster County 4-H Horse Judging Contest will be held on Saturday, May 30, 2 p.m. at the Sandhills Global Event Center – LivestockMarket Pavilion. Open to all 4-H'ers – need not be enrolled in the horse project. You may register in advance by emailing name(s) and age(s) of youth to Kate Pulec at kpulec3@unl.edu or at the event 1:30–2 p.m. This is a Lancaster County Super Fair contest held before the fair and is a premium event. Ribbon placings will be awarded. The top 10 contestants in all three age groups will be recognized at Horse Awards Night. All division participants must complete one set of oral reasons to be eligible to win the championship buckle.

HORSE IDENTIFICATION FORMS DUE JUNE 1

— Each horse being shown in 4-H at the Lancaster County Super Fair or State Horse Expo must be identified on 4-H Horse Identification Certificate form and submitted to the Nebraska Extension in Lancaster County office by June 1. Sketch markings showing both sides and face on the form are preferred instead of photos. The Horse Identification Certificate is available online at <http://go.unl.edu/horseID> and at the Extension office as a carbon copy form. If you use the online form and plan to mail it, make a copy for your records. Send completed forms to lan4h@unl.edu or Nebraska Extension in Lancaster County, 444 Cherrycreek Road, Suite A, Lincoln, NE 68528.

STATE HORSE EXPO ENTRIES

DUE JUNE 1 — The Fonner Park State Horse Expo will be held July 11–15 in Grand Island. Exhibitors must be ages 8–18 (by Jan. 1 of the current year) and have passed Horsemanship Advancement Levels I and II. State 4-H Horse Show entries, horse identifications and level requirements are due June 1. The entry process must be completed online by the exhibitor or their family. For more information and entry link, go to <https://4h.unl.edu/horse-expo>. Horse identification certificates, 2- & 3-year old western pleasure affidavits and completed horsemanship levels must be submitted to the Extension office or emailed to kpulec3@unl.edu or lan4h@unl.edu.

HORSEMANSHIP LEVEL TESTINGS,

JUNE 2, 16, 23 — A 4-H horsemanship level group testing will be held on Tuesday, June 2, at the Sandhills Global Event Center. All of the written horsemanship level requirements must be completed and submitted to Kate Pulec before the riding portion of the levels can be conducted. Additional level testings will be held on Tuesday, June 16 and Tuesday, June 23 at the Sandhills Global Event Center. Anyone wishing to test must sign up by May 26 for June 2, by June 9 for June 16 and by June 16 for June 23 by emailing Kate at kpulec3@unl.edu. Held in the evening, time slots will be emailed. All other horsemanship level requirements and paperwork must be completed and handed in to Kate at the Extension office before the riding portion can be done.

STATE 4-H HORSE SHOW, JULY 11–15

— The Fonner Park State 4-H Horse Exposition will be held July 11–15 at Fonner Park in Grand Island. Information is at <http://4h.unl.edu/horse/state-expo>. Please bring a stall gate at least 48-inches wide. All stalls will be required to have bedding and must be cleaned before releasing. Shavings will be available for purchase on the grounds. Please bring your own feed. A 14-day health certificate and a negative Coggins Test will be required for all horses attending the State 4-H Horse Expo in Grand Island. All horses will be checked. No 4-H horse exhibitors and/or owner shall exhibit a horse at the Fonner Park State 4-H Horse Exposition that has been given in any manner whatsoever, internally or externally, a narcotic, stimulant, depressant, analgesic, local anesthetic or drug of any kind within 24 hours before the first scheduled event of each show day at 8 a.m. A horse on prescribed treatment of phenylbutazone and/or aspirin-like products must file a statement in the 4-H Horse Show office before the horse can be shown. This statement must describe the treatment reason and be signed by an accredited D.V.M. Anyone is welcome to come cheer on these 4-H competitors!

LIVESTOCK ACHIEVEMENT PROGRAM, DEADLINE JUNE 15

— The Nebraska 4-H Livestock Achievement Program recognizes Members of Excellence in the project areas of beef, sheep, meat goat, swine, dairy cattle, dairy goat, rabbit and poultry. The program consists of three age levels (8–10, 11–13 & 14–18) that require 4-H'ers to plan and report a range of project-related accomplishments. Apply by Monday, June 15. Details at <https://4h.unl.edu/livestock-achievement-program>.

PLANT SCIENCE IN-PERSON CONTESTS, JUNE 16

The Lancaster County 4-H Plant Science Contests will be held in-person on Tuesday, June 16, 10 a.m.–Noon at the Nebraska Extension in Lancaster County conference rooms, 444 Cherrycreek Road, Suite A, Lincoln. Register by Monday, June 15 by calling 402-441-7180. Open to 4-H members ages 9–18 from all counties. Youth choose which contest(s) to participate in:

- Tree Identification — identify tree samples. The 2026 Nebraska 4-H Tree List will be used.
- Grass & Weed Identification — identify grass and weed samples. The 2025 Nebraska 4-H Weed & Grass Plant List will be used.
- Horticulture Contest — identify samples of vegetables, fruits, nuts, herbs and landscape ornamentals. The plant list contains plants commonly used or sold in Nebraska.

Participants will be able to use a list of plants while identifying samples. Study materials and tree/plant lists are at <https://lan4h.unl.edu/hort-fair>.

SEWING HELP SESSIONS

— Sewing Help sessions for 4-H youth ages 8–18 will be held Tuesday, June 23 and Thursday, June 25 from 12:30–4:30 p.m. and Saturday, June 27 from 10:30 a.m.–2:30 p.m. All sessions will be held at the Sewing Centre of Lincoln, 5740 Old Cheney Road in Lincoln. No fees or preregistration required, just drop in. Expert sewing help is available for fitting your pattern, laying out your project, sewing it together or whatever is needed. Bring your project, sewing machine and supplies with you. Get the help you need to put your project together or for any guidance along the way. Taught by a group of knowledgeable volunteer seamstresses.

EARN A NEW SEWING MACHINE

— This is the 17th year Kath Conroy, head 4-H Clothing Superintendent, and her husband, Mike, are graciously donating a new Bernina sewing machine to one Lancaster County 4-H youth! All interested youth should submit an essay describing the clothing projects they have completed in the past and their plans for future sewing projects. Also explain why they should be the youth to receive it. Mail, deliver or email essays by Thursday, June 25 to Nebraska Extension in Lancaster County, 444 Cherrycreek Road, Ste. A, Lincoln, NE 68528 or email to kristin.geisert@unl.edu. If questions, contact Kristin at 402-441-7180 or kristin.geisert@unl.edu. Essays may be handwritten or typed by the 4-H'er. Applicants MUST be currently enrolled 4-H members.

LIFE CHALLENGE CONTEST, JUNE 24

— 4-H Life Challenge Contest is open to all 4-H'ers ages 8–18 (by January 1 of the current year) and helps youth learn more about issues related to a variety of family and consumer science topics. There will be three sections of the contest; problem-solve a challenge to present to a judge, hands-on activity stations to complete and a multiple-choice quiz. This contest has two age divisions; Junior (for ages 8–11) and Senior (for ages 12–18) and will be held on Wednesday, June 24, 8:30 a.m.–12 p.m. at Nebraska Extension in Lancaster County Conference Rooms at 444 Cherrycreek Road, Suite A, Lincoln. The study packet is available online at <https://go.unl.edu/life-challenge> or as a hard copy by request at the office. Register by Wednesday, June 17 by calling 402-441-7180 or emailing Kristin Geisert at kristin.geisert@unl.edu. This is a Lancaster County Super Fair contest held before the fair and premium event.

LIVESTOCK BOOSTERS SCHOLARSHIP DEADLINE JULY 6

— Applications for the Lancaster County 4-H & FFA Livestock Boosters \$500 college scholarships are due July 6. Open to all Lancaster County 4-H or FFA high school seniors, but preference to those who have exhibited production livestock in 4-H or FFA. The application is online at <http://go.unl.edu/livestock-scholarships>.

HORSE INCENTIVE DUE JULY 24

— Any Lancaster County 4-H member may participate in the horse incentive program and earn points by participating in horse-related activities between January 1 and July 20. The more points you earn, the more valuable the reward! The points you tracked from participating in horse-related activities must be totaled on the Horse Incentive Summary Sheet. Official sheets and the Reward Request Form are due to the Extension office no later than Friday, July 24. More information can be found at <https://go.unl.edu/horse-incentive>.

PHOTOGRAPHY HELP SESSION, JULY 13

— A 4-H Photography Help Session will be held Monday, July 13 from 10 a.m.–2 p.m. at the Nebraska Extension in Lancaster County conference rooms, 444 Cherrycreek Road, Suite A, Lincoln. No fees or preregistration required, just drop in. 4-H youth ages 8 and up. Super Fair Photography Superintendent, Brett Jurgens, will be on hand to answer questions about fair entry, give tips, provide guidance for photo selection, and demonstrate the matting process. Bring your photography project(s) and get the help you need to get your exhibits ready for the Super Fair. Fair static exhibit entry tags, photography data tags, as well as mat boards will be available.

Aug./Sept. NEBLINE
and SuperFair.org
will have a
complete schedule!



LANCASTER COUNTY
Super Fair

JULY 30 - AUGUST 8, 2026

4-H & FFA Exhibits & Events July 30–Aug. 2

4-H Horse Shows July 29–Aug. 2

Sandhills Global Event Center
84th & Havelock, Lincoln

2026 SUPER FAIR ADMISSION —

General public entry details:

- Free parking
- \$5 per person daily admission
- Children 5 & under are free!
- Super Fair coupons — starting July 1, admission coupons will be available at all Lancaster County Gate Sponsor Locations: Super Saver, Russ's Market & U-Stop Convenience Shops. Pick your perk: buy one, get one admission OR \$5 off Grandstand ticket (Limit one offer per coupon)
- New this year, fair gate admission is included with your Grandstand event ticket.

NOTE: 4-H & FFA exhibitors and their immediate family members can get an exhibitor wristband valid for the entire 10-day fair (see NEBLINE p. 10).

4-H CHICKEN DINNER & SILENT AUCTION, JULY 31 —

Lancaster County 4-H Council is hosting two fundraiser events on Friday, July 31 during the Super Fair in the South Hall (vehicles enter Gate 4 off Havelock, park near South Hall):

- Chicken Dinner 5:30–7:30 p.m. — enter through the Lancaster County Farm Bureau Room. Dinner features Slim Chickens chicken tenders, side dishes and dessert! To-go boxes will be available. Tickets can be purchased at the door and advance tickets are available at the Extension office before the fair or at the 4-H food stand during the fair.
- Silent Auction 5–7 p.m. — enter through the east doors. Top bidders may pay for and pick up items after 7:30 p.m. If you wish to donate items or gift certificates for the silent auction, contact 4-H Council at lancastercounty4hcouncil@gmail.com or contact Tracy at 402-441-7180 or tracy.anderson@unl.edu no later than Wednesday, July 22.

Babysitting Training For Youth Ages 10–16

Extension Educator Ingrid Lindal will present a Babysitting Training open to youth ages 10–16 on Friday, June 19, 9 a.m.–2:30 p.m. at the Nebraska Extension in Lancaster County conference rooms, 444 Cherrycreek Road, Suite A, Lincoln. Cost is \$40 per participant.

Participants will:

- Learn about child development.
- Learn how to identify

common hazards in the home.

- Learn basic CPR and first aid.
- Make a babysitting kit.
- Make and enjoy a healthy snack.
- Create a business card for their babysitting business.
- Receive a babysitters workbook.

Register by June 12 at <https://go.unl.edu/babysitting-clinic>. Space is limited, so register early! Payment due

day of the training by check (payable to the University of Nebraska–Lincoln) or cash. Please bring a sack lunch.

For more information, contact Ingrid Lindal at ilindalchavarria2@unl.edu or 402-821-2151.

Accommodation requests for registration or attendance may be directed to Ingrid at least two weeks prior to the program. Early requests are strongly encouraged to allow sufficient time to meet access needs.

4-H Events Open to All Youth

4-H CLOVER COLLEGE HANDS-ON WORKSHOPS

Lancaster County 4-H Clover College is four days of in-person, “hands-on” workshops. It will be held June 9–12 at the Nebraska Extension in Lancaster County conference rooms, 444 Cherrycreek Road, Suite A, Lincoln. Youth must be at least 6 years old to attend. Need not be enrolled in 4-H. With **54 total workshops**, many still have openings! Check for current workshop availability and registration link at <https://lancaster.unl.edu/4h/clover-college>. As of press time, the following workshops still have openings:

- **Design It. Build It.** — Build fantastic bridges and discover the future of cars.
- **Watercolor Wonders** — Design beautiful ‘doorway’ art using watercolor techniques and architectural styles.
- **Wingin’ It** — Flutter into the fascinating world of the Monarch butterfly with fun activities.
- **Gorgeous Glass** — Beautify reused colorful bottles and ceramics using a variety of techniques and embellishments.
- **Robot Challenge** — See what robots can do and how to make them move.
- **What’s Poppin’?** — Nebraska loves its popcorn. Cook and taste many varieties.
- **Animal Wind Chimes** — Transform terracotta pots into musical outdoor art with animal faces.

ONLINE PLANT SCIENCE CONTESTS

All youth, as well as adults, may test their knowledge of plants through two upcoming online plant science contests. Study materials are online at <https://lancaster.unl.edu/hort-fair>.

- **Lancaster County 4-H Online Tree ID and Grass & Weed ID Contests** will be open from Tuesday, June 9, 9 a.m. through Tuesday, June 23, 9 a.m. For more information and links, go to <https://lancaster.unl.edu/hort-fair>.
- **Nebraska 4-H Online Horticulture Judging Contest** will be available from Tuesday, June 9, 8 a.m. through Tuesday, June 23, 8 a.m. For more information and link, go to <https://4h.unl.edu/online-horticulture-judging-contest>.

Support 4-H Youth During Give to Lincoln Day

Lancaster County 4-H Council is one of the nonprofits the community can donate to during Give to Lincoln Day hosted by Lincoln Community Foundation.

Your donation is increased by a proportional share of a \$650,000 challenge match fund!

For more information or to make a tax-deductible donation, go to <https://go.unl.edu/giveto4hcouncil>

Lancaster County 4-H
engages over 37,000
youth annually!



give
TO LINCOLN DAY
Thursday, May 28

4-H & FFA at Super Fair

Announcements

FOR 4-H & FFA MEMBERS AND VOLUNTEERS



4-H & FFA FAIR BOOK IS ONLINE — The 2026 Lancaster County 4-H & FFA Fair Book contains detailed entry information for exhibiting in 4-H and FFA at the Super Fair. New this year, the Fair Book is online in an improved format at <https://lancaster.unl.edu/4h/fair/fair-book>. Printed Fair Books have been mailed to all enrolled 4-H & FFA families. Additional printed Fair Books are available for pick up at the Extension Office and the Sandhills Global Event Center.

AMERICA'S 250TH ANNIVERSARY THEME EXHIBITS/ANIMAL PEN DECORATIONS — Help celebrate America's 250th anniversary by exhibiting 4-H static exhibits or decorating your animal pen/stall/table areas at the Lancaster County Super Fair using a 250th Anniversary theme! At the fair, all 4-H static exhibits with an America's 250th theme will be grouped in a special display. Each theme static exhibit will receive a commemorative America's 250th ribbon in addition to the judge's ribbon! Each animal exhibitor who uses decorations or a costume using this theme will receive a commemorative America's 250th ribbon! See the 4-H & FFA Fair Book for details.

4-H & FFA EXHIBITOR WRISTBANDS — 4-H & FFA exhibitors can pick up green holographic exhibitor wristbands for themselves and their immediate families at the Extension office (available July 1–30) or Extension 4-H fair, horse and livestock offices at the Sandhills Global Event Center (SGEC) (during the 4-H & FFA portion of the fair) or SGEC Main Office (July 30–Aug. 2). These wristbands serve as admission for the entire 10-day Super Fair, and are not needed July 28–29. Kids 5 & under are free — no wristband needed. Parking is now FREE. The wristbands are durable, washable & specifically designed to last all 10 days. Wristbands must be worn at all times while on the fairgrounds. If your wristband becomes damaged, bring the original to the SGEC Main office to exchange for a new one.

BE A FAIR VOLUNTEER — HAVE FUN, MAKE A DIFFERENCE! — Lancaster County 4-H asks for adults and youth ages 8 and up to help 4-H during the Lancaster County Super Fair at the Sandhills Global Event Center. If you, someone from your club or an interested volunteer would like to help, contact the Extension office at 402-441-7180. Help is needed:

- **IN THE 4-H FOOD STAND** (ages 8 and up) from Thursday, July 30 through Sunday, Aug. 2 (sign up online at <http://go.unl.edu/foodstandsignup>). All volunteers are **strongly encouraged** to attend the food stand prep session on Sunday, July 26, 5 p.m. in the Ag Society Hall.
- **WITH STATIC EXHIBIT SET-UP** (ages 8 and up) on Sunday, July 26, 5:30 p.m., in the Ag Society Hall. Bring power screwdrivers, if available. Pizza will be served to the volunteers after set-up.
- **DURING JUDGING OF STATIC EXHIBITS** (ages 12 and up) on Wednesday, July 29.

4-H & FFA ANIMAL ENTRIES MUST BE SUBMITTED ONLINE JUNE 18–JULY 1 — All 4-H & FFA animal entries for the Lancaster County Super Fair must be entered online through ShoWorks at <https://go.unl.edu/lcsf-animal-entries>. Animal entries may be submitted online starting on Thursday, June 18. Deadline is Wednesday, July 1, 11:59 p.m. This includes stall requests and livestock/poultry exhibitor T-shirt sizes. Registration website, details and step-by-step instruction guide will be at <https://lancaster.unl.edu/4h/fair/animals/#entries>. Only parents/guardians and 4-H members may submit animal entries. Youth must be enrolled at <https://4honline.com> by Monday, June 15.

- **STALL/PEN RESERVATIONS:** For beef, bucket calves, dairy cattle, swine, sheep, meat goats, dairy & pygmy goats and horse entries, you must submit stall/pen requests during the online entry process or you will be assigned stalls/pens (requests are subject to space and availability). During online entry, look for '_Stalls and Pens_' as the first option under division (species). Please submit 1 '_Stalls and Pens_' item per animal species. Rabbits, poultry and cats are assigned cages based on entry numbers.

LIVESTOCK BEDDING AND HORSE ROPING/WORKING RANCH FEES DUE JULY 7 —

- Livestock exhibitors who enter the following species will be charged a bedding fee: Beef and dairy cattle — \$12 per head. Bucket calves — \$9 per head. Fill out the form at <https://go.unl.edu/lcsf-livestock>. Print and submit with payment (cash or check) to the Extension office by Tuesday, July 7.
- Roping/Working Ranch horse exhibitors who enter the following classes which require a calf will be charged a livestock fee: working ranch, boxing, breakaway run, heading run and heeling run — \$20 per class. **Note: fee increased by \$5 for 2026.** Fill out the form at <https://go.unl.edu/lcsf-horse>. Print and submit with payment (cash or check) to the Extension office by Tuesday, July 7.

BAGGED SHAVINGS — All livestock and horse exhibitors must use shavings provided by the Sandhills Global Event Center (SGEC). Absolutely no outside shavings or straw is allowed since SGEC composts. Note: all stalls are disinfected with Nixall between each rental year-round. Special discounted 4-H & FFA price of \$9 per bag (with sales tax included) will be honored for 4-H & FFA animal shows from Tuesday, July 28 through Saturday, Aug. 1 with self-pickup at the General Store in EquineMarket Pavilion. 4-H & FFA exhibitors may pay and pick up their shavings at the General Store on east end of EquineMarket Pavilion during these hours:

- Tuesday, July 28, 4–8 p.m.
- Wednesday, July 29, 7 a.m.–9 p.m.
- Thursday, July 30, 7 a.m.–9 p.m.
- Friday, July 31, 7 a.m.–3 p.m.
- Saturday, Aug. 1, 7 a.m.–3 p.m.

If you need shavings outside of these hours, please call SGEC office at 402-441-6545 or stop by (it is in front of Ag Society Hall on northwest corner of facility) daily 8 a.m.–10 p.m. with any form of valid payment accepted. **PREORDER SHAVINGS!** Save time and prepay for shavings online to pick up at the General Store in EquineMarket Pavilion. On arrival, just check in quickly with cashier to sign for your shavings. Preorder at <https://bit.ly/3Kahqrr> no later than Monday, July 27, 4 p.m.

FASHION SHOW JUDGING, JULY 21; PUBLIC FASHION SHOW, JULY 30 — The Fashion Show is open to 4-H members ages 5–18. Judging and a Clover Kids optional modeling practice session will be held before the fair on Tuesday, July 21, beginning at 8 a.m. at the Nebraska Extension in Lancaster County conference rooms and lobby, 444 Cherrycreek Road, Suite A, Lincoln. Prior to judging, an email will be sent to participants assigning specific check-in and judging times. Clover Kids may practice modeling any time between 8 a.m. and noon. The public Fashion Show will be Thursday, July 30 at 7 p.m. at the Sandhills Global Event Center, South Hall (**note: time has moved up a half hour**). New this year: entry forms are online as web forms. Details and entry forms are online at <https://lancaster.unl.edu/4h/fashion-show>. All participants are strongly encouraged to read the information on this web page. Register by submitting one of the following web forms for EACH entry by Monday, July 13.

- Constructed Garment Fashion Show Form — for each entry constructed by 4-H members ages 8–18. Must upload a photo (color photo preferred) or sketch. New in 2026, no fabric swatches needed.
- Shopping in Style Fashion Show Form — for a purchased outfit modeled by 4-H members ages 8–18. Must upload a photo (color photo preferred).
- Clover Kids Fashion Show Form — for item modeled by 4-H members ages 5–7. Upload a photo or sketch of the item.

STATIC EXHIBIT CHECK-IN, TUESDAY JULY 28, 4–8 P.M. — 4-H & FFA static exhibits do not preregister, but **MUST** be physically checked in during Static Exhibit Check-in on Tuesday, July 28, 4–8 p.m. at the Lancaster Event Center, Ag Society Hall. An adult — such as a club leader or parent(s) — should assist 4-H members in entering exhibits. A registration table is set up for each of the project areas — please take project(s) to the appropriate area(s). All entry tags, additional information, recipe cards, data tags, etc. **MUST** be attached at this time. EACH 4-H static exhibit must have a 4-H Static Exhibit Entry Tag attached. Some classes require additional information — see 4-H & FFA Fair Book for detailed entry requirements for each class. Specific tags are required to be completed and attached to the following exhibits:

- **Photography Data Tag Levels**
- **Home Design & Restoration Supporting Information Tag**
- **Visual Arts Supporting Information Tag**
- **Food Preservation Card**
- **Food Preservation Jar Label**
- **Clothing Design Data Card**
- **Fiber Arts Knitting and Crochet Data Cards**
- **Quilt Quest**

It is highly encouraged to pick up tags/cards at the Extension office or download at <https://lancaster.unl.edu/4h/fair> and fill them out beforehand, however, tags/cards will be available during check-in. (Exception: Static Exhibit Entry Tag is not available online because it is a carbon-copy triplicate.)

from previous page

STATIC EXHIBIT INTERVIEW JUDGING, JULY 29 — Interview Judging is Wednesday, July 29 beginning at 9 a.m. in the Ag Society Hall. 4-H members have the opportunity to talk to judges about their static exhibits and share what was easy, what was challenging and the lessons they learned. 4-H members also learn what the judge looks for and how to improve skills. See 4-H & FFA Fair Book for project areas which have interview judging. 4-H'ers may interview judge one exhibit from each project area (for example: 1 item from Visual Arts – Themes, 1 item from Design Decisions and 1 item from Cooking 101); except Clothing, which allows multiple exhibits. To sign up members for a five-minute time slot, call the Extension office at 402-441-7180 between July 6 and 22. If slots are still available, you may sign up in person during Static Exhibit Check-in on Tuesday, July 28, 4–8 p.m. Parents/grandparents/guardians are not allowed in the judging areas.

STATIC EXHIBIT RELEASE, AUG. 3 — All static exhibits will be released on Monday, Aug. 3 from 7–11 a.m. All static exhibits MUST be picked up during release time. Please pick up premium payouts BEFORE picking up static exhibits. Staff at the payout table will provide a list of each 4-H member's static exhibits, which will help families collect all of their projects without leaving any behind.

PREMIUM PAYOUTS FOR STATIC EXHIBITS, CONTESTS AND HORSE

— Premium payouts for all static exhibits and contests held before and during the fair (except livestock judging, rabbit and poultry contests) must be picked up on Monday, Aug. 3, 7–11 a.m. in the Ag Society Hall. 4-H & FFA members or their representatives may pick up premium payouts — a signature will be required. For horse exhibitors, the entire 4-H club must have removed all bedding from each stall in order for premiums to be received (stalls will be checked).

PREMIUM PAYOUTS PROCEDURE FOR ANIMALS HAS CHANGED

(except horse and rabbit) — Livestock and poultry exhibitors must pick up premium payouts on Sunday, Aug. 2, 5–7 p.m. at the Abate Room. The Abate Room is near the Lancaster Room and between the Currency and TractorHouse Pavilions. Cat, household pets and dog premiums will be paid at the shows. Livestock Judging Contest participants will receive premiums after the contest. Note: Dog Trivia is a contest with payout on Monday, Aug. 3.

TABLE SETTING CONTEST, JULY 31

— In the Table Setting contest, participants select a theme, wear a costume related to that theme and display one place setting, including table covering, dishes, glassware, silverware, centerpiece and menu. (Do not bring/prepare food.) 4-H'ers also give a 5-minute prepared presentation about their table to a judge. The Table Setting Contest will be held during the Super Fair on Friday, July 31 at the Sandhills Global Event Center (South Hall — use east entrance). Register by Tuesday, July 21 by calling 402-441-7180 (there is no entry form).

Provide 4-H'ers age and category (picnic, casual, formal or holiday). Judging time slots will be at 5, 6 or 7 p.m. and will be assigned ahead of time by 4-H staff. 4-H'ers will be emailed the judging schedule about a week prior to the contest. Details are online at <https://lancaster.unl.edu/4h/table-setting>. All participants are strongly encouraged to read the information on this web page.

CLOVER KIDS SHOW & TELL, AUG. 2

— All 4-H Clover Kids, youth ages 5–7 by Jan. 1, 2026, are invited to show & tell one of their static exhibits or a small animal during Clover Kids Show & Tell on Sunday, Aug. 2 in the Ag Society Hall, Clover Kids exhibit area (15-minute time slots run from 1–2:30 p.m.). Clubs may show a group project or perform a short skit or song. See the 4-H & FFA Fair Book for more information. To sign up for a time slot, call 402-441-7180 between July 6 and July 22. If slots are still available, you may sign up during 4-H static exhibit check-in on Tuesday, July 28, 4–8 p.m. in the Ag Society Hall at the main 4-H information table (with a red tablecloth) near the Clover Kids static exhibit area.

CLOVER KIDS ANIMAL SHOWMANSHIP

Most livestock shows and the Rabbit Specialty Show include a 4-H Clover Kids Showmanship class for 4-H members ages 5–7 (by Jan. 1 of the current year). Participants must be enrolled by June 15. For most livestock shows, Clover Kids Showmanship follows the regular age division Showmanship classes. For rabbits, Clover Kids Showmanship is part of the Rabbit Specialty Show. The animal must weigh less than 350 pounds and there must be one adult/teen volunteer present for every Clover Kid member that is handling or exhibiting animals. To participate, check in at the announcer table any time between the beginning of the show and Clover Kids Showmanship, providing the Clover Kid's name and helper's age. There are two ways the livestock, poultry or rabbit(s) may be obtained:

- 1) Talk to 4-H or FFA members to find an animal.
- 2) Clover Kids may bring their own animal. An animal ID must be submitted by June 15 (poultry do not require an ID). Clover Kids do not need to complete Youth for the Quality Care of Animals (YQCA) requirements. Request a stall/pen by emailing lancaster4h@unl.edu by July 1. Clover Kids may follow animal 4-H & FFA exhibitor load-in and load-out guidelines OR arrive day-of the species show. Animals arriving day-of-show must be in stalls by 8 a.m. and may be released at completion of show.

LIVESTOCK PREMIUM AUCTION DONATIONS NEEDED

— The Lancaster County 4-H & FFA Purple Ribbon Market Livestock Premium Auction is a way for the community to reward purple ribbon market animal exhibitors. "Premium" cash rewards are given by individuals and businesses. The success of the auction is dependent on donations and buyers. Your help is needed to secure funding — please talk with your community businesses. Information and a pledge web form is at <https://lancaster.unl.edu/4h/fair/livestock-auction>. For more information, contact Auction Committee Chair Julia Plugge at julia.plugge@gmail.com or 402-450-0706.

JUNE 15 4-H DEADLINES

To participate in 4-H at the Lancaster County Super Fair, youth MUST complete the following before Monday, June 15. If you have questions, contact 402-441-7180 or lancaster4h@unl.edu.

ENROLL/RE-ENROLL ONLINE — All 4-H members and leaders must enroll/re-enroll for the 2025–2026 4-H year. (Note: Parent/guardian helpers do not need to enroll, only their participating children). The website to enroll or re-enroll is 4-H Online at <https://4honline.com>. Only parents/guardians may enroll 4-H youth. Each 4-H household will need to initially set up a family profile where you will add the individual 4-H youth and/or volunteers in your household. For returning families/volunteers, please do not create a new account — use your previous log-in credentials.

ENROLLING YOUTH:

- The only required health information is regarding allergies and permission to treat.
- Response to "Image Permission," yes or no, is required.
- Project selection is no longer required for each entry exhibited at county/state fair(s); however, each youth needs to select at least one project to complete online enrollment. Exceptions: Shooting Sports and Horse project participants MUST select these projects for the required safety permissions.
- Each youth must select a club, Lancaster Independent or FFA Chapter. 4-H members who are not in a club or FFA chapter, will select "Lancaster Independent" under "Club."

ENROLLING VOLUNTEERS:

- 4-H volunteers who enrolled or re-enrolled after Jan. 7 are required to complete Nebraska 4-H's new Volunteer Orientation in 4-H Online.

YOUTH FOR THE QUALITY CARE OF ANIMALS

— 4-H & FFA members participating in any of the following animal projects need to complete Youth for the Quality Care of Animals (YQCA) training: beef (bucket calf, feeder calf, breeding beef, market beef), dairy cattle, goat (breeding meat goat, market meat goat, bottle meat goat, dairy/pygmy goat), poultry, rabbit, sheep (breeding sheep, market sheep), swine (breeding swine, market swine). In Lancaster County, youth may choose one of two options to complete their YQCA requirements:

- Complete online training at <https://yqcaprogram.org>. Cost is \$12. For more information, visit <https://4h.unl.edu/yqca>.
- Attend an in-person training held Thursday, May 21 or Thursday, June 4, 6–7 p.m. at the Nebraska Extension in Lancaster County conference rooms, 444 Cherrycreek Road, Suite A, Lincoln. To sign up for in-person trainings, you must go to <https://yqcaprogram.org> before the training. The training will cost \$3 payable by credit or debit card on the website. We cannot take payments in person; all families must register and pay online. **Note: You will need to take a 5-question pre-test at <https://yqcaprogram.org> before attending.** You must sign in as proof of attendance — certificates will be available online.

Send completed certificates to lancaster4h@unl.edu or Nebraska Extension in Lancaster County, 444 Cherrycreek Road, Suite A, Lincoln, NE 68528. If certificates are not submitted, 4-H staff have no way of knowing if trainings have been completed.

ANIMAL IDS

- All 4-H & FFA beef, bucket calf, dairy cattle, swine, sheep, goat and rabbit ID forms are due by June 15 to the Extension office or emailed to lancaster4h@unl.edu. Pick up tags and ID forms from Extension office (forms are also at <https://lancaster.unl.edu/4h/fair/animals>). DNA envelopes for the State Fair are also due June 15. **NEW in 2026: Exhibitors planning to show the same animal at both the State Fair and the Aksarben Stock Show must submit two separate DNA envelopes.**
- 4-H poultry, dogs, cats and household pets do not require identification forms.

Nebraska Extension in Lancaster County
444 Cherrycreek Road, Ste. A, Lincoln, NE 68528
402-441-7180 • lancaster.unl.edu

The University of Nebraska does not discriminate based on race, color, ethnicity, national origin, sex, pregnancy, sexual orientation, gender identity, religion, disability, age, genetic information, veteran status, marital status, and/or political affiliation in its programs, activities or employment.
<https://nebraska.edu/nondiscrimination>

Accommodation requests for registration or attendance may be directed to Karen Wobig at least two weeks prior to the program at lancaster@unl.edu or 402-441-7180. Early requests are strongly encouraged to allow sufficient time to meet access needs.

The Nebraska Library Commission's Talking Book and Braille Service records the NEBLINE for individuals with a visual or physical condition or a reading disability which limits use of regular print. For more information, go to www.nlc.nebraska.gov/tbbs or call 402-471-4038 or 800-742-7691.

NEBLINE

Would You Prefer Digital?

E-newsletter version is at <https://go.unl.edu/nebline>

Subscribe to Digital or Print Versions

Subscribe/unsubscribe to the print and/or digital versions by going to lancaster.unl.edu/nebline or by calling 402-441-7180. Mailed subscription costs are covered by Nebraska Extension in Lancaster County.

Copyright ©2026

EXTENSION NEWS

New Health & Wellbeing Staff Member

Charlotte Guthrie

recently joined Nebraska Extension as an On-Call Supplemental Nutrition Assistance Program Education (SNAP-Ed) Assistant through September 2026, with a primary focus on supporting the Growing Together Nebraska (GTN) project. GTN is a SNAP-Ed funded donation garden project that increases food security and promotes healthy food access. SNAP-Ed is a federally funded program that supports nutrition education and obesity prevention efforts for individuals and families eligible for SNAP benefits. Charlotte supports donation garden efforts by coordinating harvest and distribution of fresh produce to local food pantries, as well as presenting nutrition education and recipe demonstrations. She also assists with program coordination, community engagement, and data collection and evaluation. Charlotte is currently pursuing a degree in Health and Human Services through the online program at Chadron State College.



Charlotte Guthrie



EXTENSION CALENDAR

All events held at the Nebraska Extension in Lancaster County conference rooms, 444 Cherrycreek Road, Suite A, Lincoln, unless otherwise noted.

May

- 25 **Extension Office Closed for Memorial Day Holiday**
- 26 **4-H Horsemanship Advancement Level Testing**, Sandhills Global Event Center
- 27 **Fireflies in Focus With Kait Chapman Webinar**, register at <https://go.unl.edu/fireflies-zoom-26> 12–1 p.m.
- 27–29 **Nebraska 4-H Premier Animal Science Event (Includes Companion Animal Challenge)**, UNL East Campus – Animal Science Complex
- 30 **4-H Horse Judging Contest**, Sandhills Global Event Center – LivestockMarket Pavilion 2 p.m. (Register 1:30–2 p.m.)

June

- 1 **State 4-H Horse Expo Entries, ID's and Level Requirements Due**
- 1 **Super Fair 4-H Horse ID's Due to Extension**
- 2 **4-H Council Meeting** 6 p.m.
- 2 **4-H Horsemanship Advancement Level Testing**, Sandhills Global Event Center
- 4 **Youth for the Quality Care of Animals In-Person Training for 4-H & FFA Livestock Animal Exhibitors** 6–7 p.m.
- 5 **Extension Board Meeting** 8 a.m.
- 9–12 **4-H Clover College** 8 a.m.–5 p.m.
- 9–23 **Lancaster County 4-H Online Tree and Grass & Weed ID Contests**, links at <https://lancaster.unl.edu/hort-fair>
- 9–23 **Nebraska 4-H Online Horticulture Judging Contest**, links at <https://4h.unl.edu/online-horticulture-judging-contest>
- 10 **GRO Big Red Virtual Learning Series: Beyond Pollinators – Predatory and Beneficial Bugs**, <http://hles.unl.edu/grobigrad> 12 p.m.
- 15 **Deadline to Enroll 4-H Members/Volunteers – Must Use 4-H Online at <https://4honline.com>**
- 15 **Deadline for Identification Requirements of 4-H & FFA Sheep/Goats/Swine/Beef/ Bucket Calves/Dairy Cattle/Rabbits**
- 15 **Deadline for 4-H & FFA Livestock Animal Exhibitors to Complete Requirements for Youth for Quality Care of Animals**
- 16 **4-H Plant Science In-Person Contests: Horticulture/Tree ID/ Grass & Weed ID** 10 a.m.–12 p.m.
- 16 **4-H Horsemanship Advancement Level Testing**, Sandhills Global Event Center
- 16–17 **Nebraska 4-H Premier Communication Event**, UNL East Campus – Nebraska East Union
- 18 **Pesticide Applicator NDA “Walk-In” Testing Session** 9 a.m.–2 p.m.
- June 18–July 1 **4-H & FFA Animal Entries for the Lancaster County Super Fair Must be Submitted Online at <https://go.unl.edu/lcsf-animal-entries> Between June 18 and July 1, 11:59 p.m.**
- 19 **Babysitting Training** 9 a.m.–2:30 p.m.
- 19 **Extension Office Closed for Juneteenth Holiday**
- 20 **4-H Horse Trail Clinic**, Sandhills Global Event Center - LivestockMarket Pavilion
- 23 **4-H Horsemanship Advancement Level Testing**, Sandhills Global Event Center
- 24 **4-H Life Challenge Contest** 8:30 a.m.–12 p.m.
- 26 **Part 107 Remote Pilot (aka Drone) Exam Prep Training** 9 a.m.–5 p.m.

July

- 1 **Deadline for All Super Fair 4-H & FFA Animal Online Entries and Horsemanship Advancement Levels**
- 3 **Extension Office Closed for Independence Day Holiday**
- 6 **4-H Livestock Boosters Scholarship Deadline**
- 8 **GRO Big Red Virtual Learning Series: Recognizing Tree Hazards and Non-Hazards**, <http://hles.unl.edu/grobigrad> 12 p.m.
- 9 **4-H Horse VIPs Committee/Superintendent Meeting** 6 p.m.
- 10 **Extension Board Meeting** 8 a.m.
- 11–15 **Nebraska 4-H State Horse Expo**, Fonner Park, Grand Island
- 13 **4-H Photography Help Session** 10 a.m.–2 p.m.
- 16 **Pesticide Applicator NDA “Walk-In” Testing Session** 9 a.m.–2 p.m.
- 20 **4-H Horse Incentive Program Last Day to Log Hours/Points**
- 21 **4-H Fashion Show Judging Day** 8 a.m.
- 24 **4-H Horse Incentive Program Forms Due to Extension**
- 28 **4-H & FFA Static Exhibit Entry for Lancaster County Super Fair**, Sandhills Global Event Center - Ag Society Hall 4–8 p.m.