

ANT IDENTIFICATION KEY

2-Node Ants

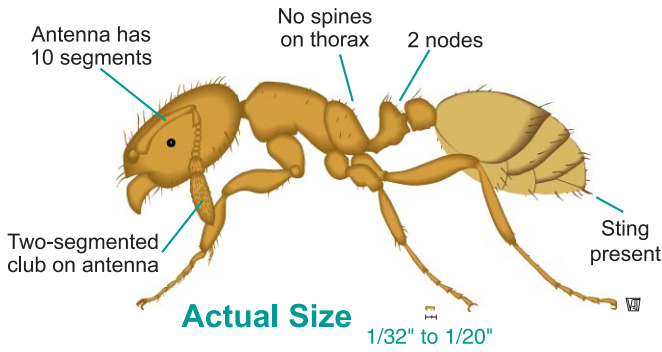
This information is valid for Nebraska.

Thief Ant

Solenopsis molesta

Also called Grease ant.

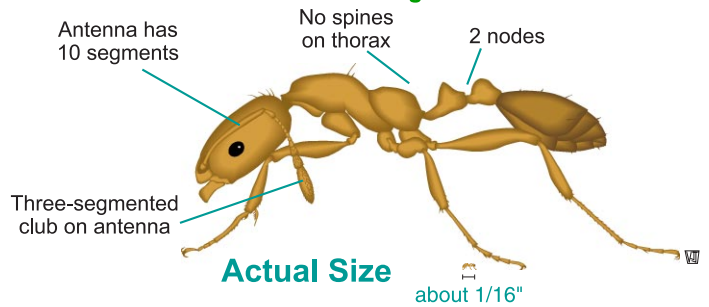
The Thief ant is most often confused with the Pharaoh ant.



Pharaoh Ant

Monomorium pharaonis

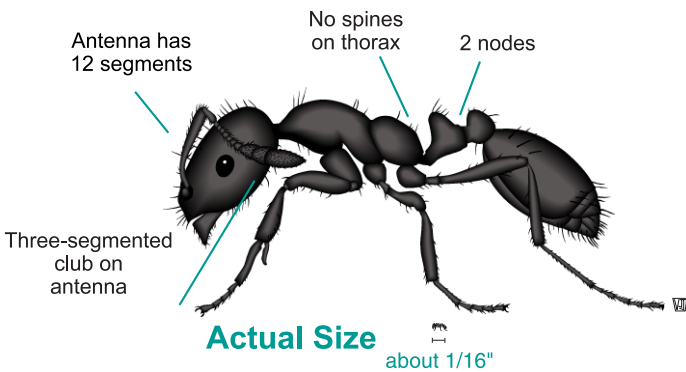
The Pharaoh ant is most often confused with the Thief ant. The primary difference between the two species is the Pharaoh ant has a three-segmented antennal club while the Thief ant has a two-segmented antennal club.



Little Black Ant

Monomorium minimum

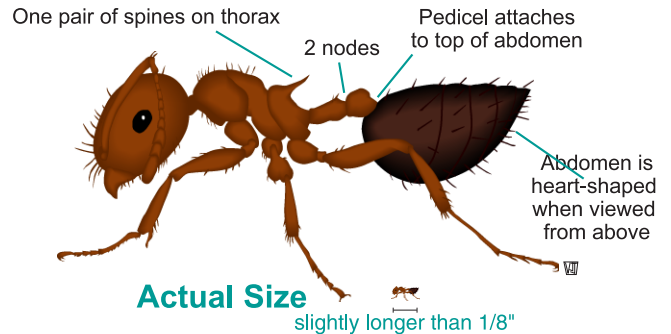
Similar in appearance to Pharaoh Ant except black in color.



Acrobat Ant

Crematogaster lineolata

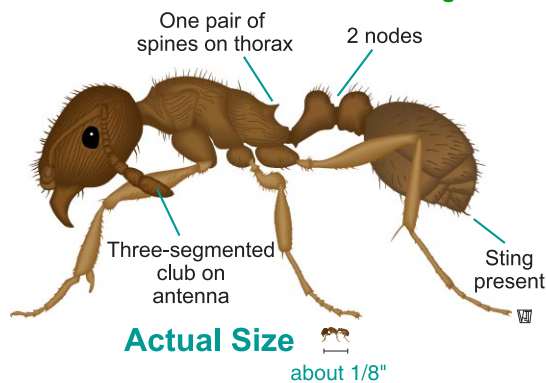
Acrobat ants get their name from the habit of holding their abdomen above their thorax when the workers or colony are disturbed.



Pavement Ant

Tetramorium caespitum

Head and thorax is covered with visible grooves.



Big-Headed Ant

Pheidole spp.

Two sizes of workers. Major workers have a very large head. Minor workers have heads more proportional to their bodies.

