

ANT IDENTIFICATION KEY

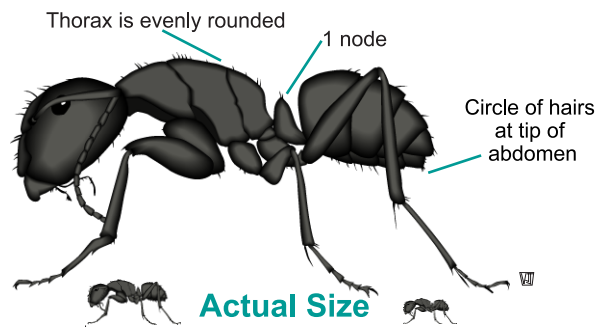
1-Node Ants

This information is valid for residents of Nebraska.

Black Carpenter Ant

Camponotus pennsylvanicus

Many sizes of workers.

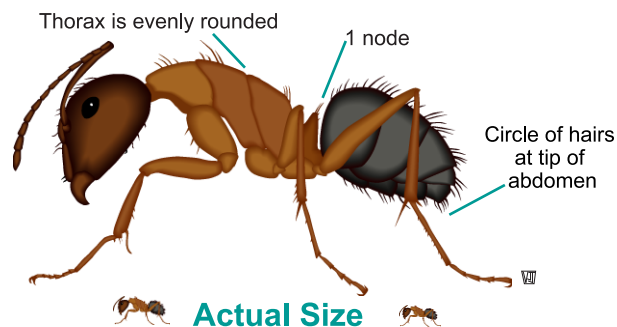


Major workers: about 7/16" Minor workers: about 1/4"

"Red" Carpenter Ant

Camponotus sayi

Many sizes of workers.

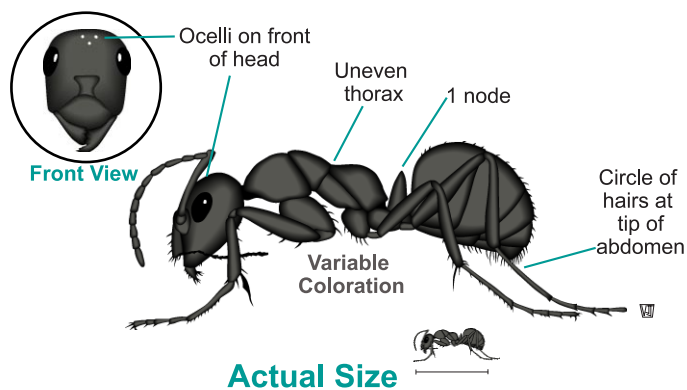


Major workers: about 1/4" Minor workers: about 3/16"

Field Ant

Formica spp.

Field ants may be black, brown, tan, reddish, or red and black in color. Often confused with carpenter ants.

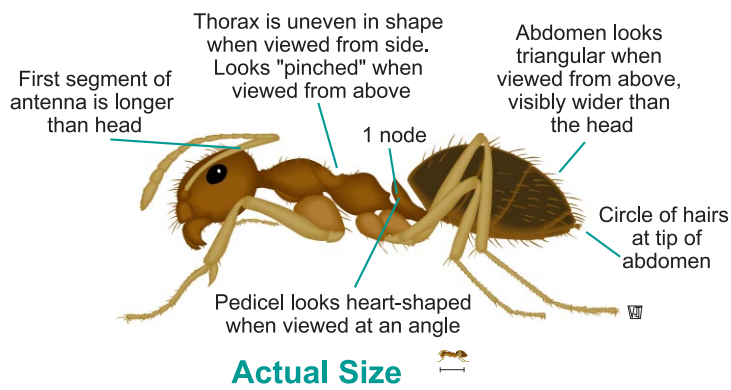


about 3/8"

Small (False) Honey Ant

Prenolepis imparis

Also called Winter Honey Ant. When these ants are swollen (full of food), the gasters (abdomen) are greatly enlarged.

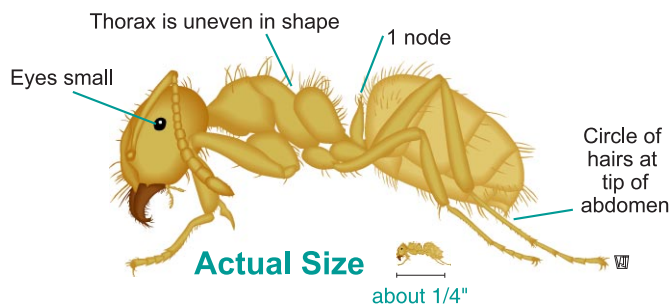


about 1/8"

Large Yellow Ant

Acanthomyops interjectus

Also called Citronella Ant or Foundation Ant. Gives off "citronella" odor when crushed.

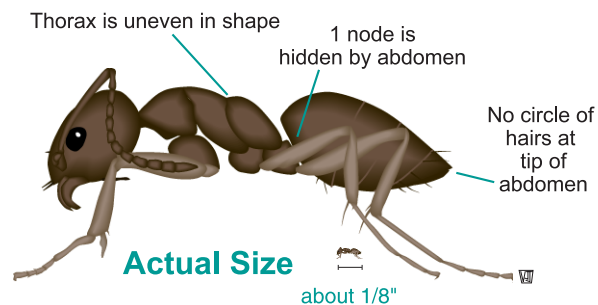


about 1/4"

Odorous House Ant

Tapinoma sessile

Has rotten coconut-like odor when crushed.



about 1/8"