

Fall Invaders: What You Can Do

By Kait Chapman,
Extension Educator in
Lancaster County

Fall is here! And with it comes lower temperatures and less food for insects, spiders and other arthropods that typically spend their time outdoors. With these seasonal changes, these animals will start to look for places to hide, including your house, garage or shed.

There are many different insects you can encounter inside your home this time of year; here are the most common invaders and what you can do to prevent and manage these unwanted guests.

The good news is most of these invaders are simply seasonal nuisances. They pose little threat to human health or damage to the home. There are several things you can do.

Prevention

- Seal up holes around the house with caulk.
- Ensure proper screens are in place.
- Ensure doors seal properly.
- Use glue traps indoors near windows and doors.
- Use a perimeter insecticide around the exterior of your home.

It is important to note that perimeter insecticide sprays are only effective for “crawlers” like spiders, millipedes and crickets. Insects like true bugs and lady beetles often avoid and bypass perimeter treatments by flying up to

structural openings. Insecticides must be applied before or while pests begin to enter the building to be effective — so timing is key. When using pesticides, always be sure to thoroughly read and follow label directions.

Getting Rid of Them

If you do find yourself with one too many unwanted house guests in your home, the simplest way to rid yourself of them is to vacuum up any that you see, discard the vacuum bag contents and follow the above preventative steps.

Do you have questions or need help identifying an insect? Nebraska Extension in Lancaster County offers free insect and pest diagnostic services, including identification and management recommendations. Contact our office at 402-441-7180 or email photos to kchapman13@unl.edu.

FOR MORE INFORMATION

Nebraska Extension has more resources at:

- lancaster.unl.edu/pest
- communityenvironment.unl.edu/pests



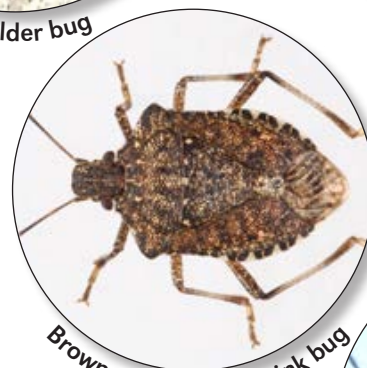
Boxelder bug



House centipede



Wolf spider



Brown marmorated stink bug



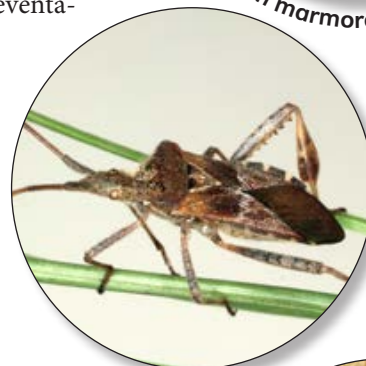
Pillbug



Cluster flies



Multicolored Asian lady beetle



Pine seed bug



Garden millipedes

Photos: UNL Department of

CHANGE SERVICE REQUESTED

Non-Profit Organization
U.S. Postage Paid
Permit No. 36
Omaha, Nebraska

Nebraska Extension in Lancaster County
444 Cherrycreek Road, Suite A
Lincoln, Nebraska 68528-1591

Extension Partners With LPS on Handwashing Videos

By Kristen Houska and Alyssa Havlovic, Extension Educators in Lancaster County

Nebraska Extension's School Enrichment Nutrition Kit program (SEK) has been teaching nutrition and healthy living concepts for 20 years in partnership with Lincoln Public Schools (LPS). The SEK curriculum consists of five lessons with an additional optional lesson that helps LPS meet their health objectives for each grade level Kindergarten through 5th grade. In addition to partnering and providing LPS with the SEK curriculum, Extension presents programs to reinforce concepts being taught in the SEK. The classroom teacher is able to choose two programs from the list of handwashing, physical activity and food experience.

Due to COVID-19, the SEK program has shifted due to our Extension staff no longer being able to enter the classrooms. The SEK curriculum is still being provided to the LPS elementary schools and being taught by the classroom teachers, but materials are being dropped off at the office instead of by our staff in the classroom. The additional programs offered in conjunction with the SEK are being offered in a different way.

Handwashing has been shown to be an important preventative measure for COVID-19. According to the Centers for Disease Control, "Regular handwashing is one of the best ways to remove germs, avoid getting sick and

prevent the spread of germs to others." Because of this, the LPS health curriculum team asked Extension to focus on making a handwashing video they could share with all the teachers in the elementary schools based upon the handwashing program we normally present.

Our team focused on handwashing videos for grades K-2nd and 3rd-5th. We are currently working on videos for middle and high school audiences. The elementary-grade-specific videos focus on these topics:



- Why do we wash our hands?
- What are germs?
- When should we wash our hands?
- Best practices for handwashing.
- Additional handwashing resources.

The handwashing videos were sent out by LPS administrators during the first full week of school in August. To date, the video for K-2nd grades has

had 332 views and the video for 3rd-5th grades has had 206 views. The handwashing videos have also been sent statewide and are being used by other Extension professionals and school districts to teach and reinforce the concepts of proper handwashing to youth. The videos can be found at <https://food.unl.edu/sek>.

LPS has continued to be a great partner throughout the COVID-19 time frame and we are pleased to be able to continue offering Extension's research-based nutrition education to all elementary students in Lincoln.

Plant A Row for the Hungry

By Emily Gratopp, Extension Educator in Lancaster County

Access to healthy food is a basic right for all. Food insecurity impacts 1 in 8 adults and 1 in 6 children in Nebraska. You can help all Nebraskans gain access to healthy, fresh, local food. The Nutrition Education Program has organized a "Plant a Row for the Hungry" campaign that involves community members donating extra produce grown in at-home gardens to those in need.

Bring clean, whole, freshly harvested produce to the Lancaster County Extension Office. The produce will be donated to local food pantries and hot meal programs to be served to individuals and families needing additional food resources. Donations are accepted on Tuesday from 8-Noon. Drop off produce at the Lancaster County Extension office at 444 Cherrycreek Road, Suite A, Lincoln — place it in a wagon in the lobby labeled "Plant a Row for the Hungry." Thank you for your donations.



RECIPE OF THE MONTH

By Kayla Colgrove, MS, RDN, ACSM-CPT, Extension Educator in Lancaster Co.

A simple snack for Halloween parties using food-safe plastic gloves with candy corn for fingernails and stuffed with popcorn.

HALLOWEEN BONY FINGERS

(Makes 5 servings)

15 cups air-popped popcorn, unsalted
25 pieces candy corn
5 poly disposable gloves, clear, one size fits most (powder-free and food safe)

1. Wash hands with soap and water.
2. Prepare popcorn according to the air popper directions.
3. Take one food safe plastic glove and place one piece of candy corn at the end of each finger for fingernails.
4. Fill each glove with 3 cups of popcorn. Place some popcorn in fingers first and then add the remaining popcorn to glove.
5. Tie the end of glove with ribbon or yarn.

Notes: 1/2 cup of unpopped kernels equals 16 cups of popped popcorn. Enjoy the leftover popcorn (about 1 cup). Prepare popcorn in a microwave according to package directions or on top of the stove.

Nutrition Information per Serving: (1 glove) Calories 130 Total Fat 1g Saturated Fat 0g Cholesterol 0mg Sodium 20mg Total Carbohydrates 28g Fiber 3g Total Sugars 8g Protein 3g

Source - Adapted from Alice Henneman, MS, RDN



Pruning Everbearing Raspberries

By Sarah Browning, Extension Educator in Lancaster County

Raspberries can be divided into two groups, summer-bearing and fall-bearing. Fall-bearing plants, sometimes called "everbearing" raspberries, are increasingly popular because they can be managed to produce one large fall crop, making pruning easier.

Everbearing raspberries are able to produce two crops a year because they produce flower buds on both old and new canes, but by pruning out all canes every year, you create one large fall crop.

Common everbearing raspberry cultivars available to the home gardener include those below.

Red

- Autumn Bliss' — early ripening; large flavorful fruits; soft fruit texture
- 'Autumn Britten' — early- to late-season ripening; very large fruits; firm and flavorful; better fruit quality but lower production than Autumn Bliss
- 'Caroline' — early- to late-season

- ripening; very productive; widely adapted cultivar
- 'Heritage' — mid- to late-season ripening; medium-sized fruits; good color, flavor, firmness and freezing quality; vigorous plants
 - 'Redwing' — mid-season ripening; large soft fruits with good flavor; moderate yield



Photo by Pixoby

Everbearing raspberries can easily be managed to develop one large fall crop each year through pruning.

Yellow

- 'Anne' — mid- to late-season ripening; largest and best-lasting yellow raspberry; pale yellow fruits
- 'Fall Gold' — early-season ripening; medium size; excellent flavor; moderate yield

Dormant Season Pruning

Manage your everbearing raspberries to produce one large crop each year by pruning plants in late winter (early- to mid-March) while the ground is frozen and before new growth has begun. By hand, rotary mower or other mechanical device, remove all above ground growth leaving a 1- to 2-inch stub for each cane. In August or early September, fruiting will occur on the current season's growth.

FOR MORE INFORMATION

Nebraska Extension NebGuide, "Growing Raspberries," (G1580) is available online at <http://go.unl.edu/raspberry>

Seasonal Needle Drop on Evergreens

By Mary Jane Frogge, Extension Associate in Lancaster County

Do you have a pine tree with yellow needles? Natural needle drop results in interior needles of pine trees turning yellow and eventually dropping off. Fall needle drop is natural. It is not a sign of a disease or insect issue. Evergreens do not keep their needles indefinitely. As trees get older, this process is more noticeable. Older, inner needles, discolor and drop off after 1 to 5 years, depending on the evergreen in question.

Sometimes the drop occurs slowly. On other occasions, many needles may turn yellow all at once in late summer or fall. Because weather triggers the condition, many evergreens are likely to show symptoms in the fall. If you are not familiar with

this natural process, it could cause you a great deal of concern.

Each species of evergreens usually keeps its needles for a definite length of time. White pines are the most dramatically affected. They usually keep three



Sarah Browning, Nebraska Extension in Lancaster County

Yellow needles from natural needle drop, as seen on this white pine, should not be mistaken for a pest problem.

years of needles in summer and two in winter. The three-year old white pine needles turn yellow throughout the tree in fall. The tree will appear particularly unhealthy when these yellow needles outnumber the green ones. Austrian and Scotch pine also keep their needles for three years and Norway pine keep theirs for four years.

Needles on arborvitae usually turn brown rather than yellow when they age. They often remain attached much longer than mature pine needles. Japanese yew needles turn yellow and drop in late spring or early summer of their third year. Spruce and fir needles also yellow and drop with age. These evergreens retain needles for several years, so you may not see needle drop unless you look closely on inner branches. These needle drop patterns vary from tree to tree and from year to year.

GARDEN GUIDE THINGS TO DO THIS MONTH

By Mary Jane Frogge, Extension Associate in Lancaster County

September is a good time to root your cuttings from annual bedding plants such as begonias, coleus, geraniums and impatiens. These plants can be overwintered in a sunny window and provide plants for next year's garden.

Tree wound paints used after pruning are no longer recommended as they can slow healing and may promote decay.

Select accent plants for your landscape that will provide autumn colors. Trees with red fall color are flowering dogwood, red maple, sugar maple, Norway maple, red oak and scarlet oak. Shrubs with red fall foliage include sumac, viburnum, winged euonymus and barberry.

Before the first frost, dig up caladiums. Allow them to dry and store them in a dry place for the winter.

Pot up chives, parsley and other herbs to extend the growing season in the house.

Plant peonies now, but make sure the crowns are buried only one and a half to two inches below ground level. Planting them deeper than two inches may keep them from blooming.

Pears should be picked at the hard-ripe stage and allowed to finish ripening off the tree. The base color of yellow pears should change from green to yellow as the fruit approaches maturity.

Be sure to keep strawberry beds weed free. Every weed you pull now will help make weeding much easier next spring.

Rake up leaves, twigs and fruit from crabapple trees and dispose of them in the trash to help control apple scab disease.

Water newly-planted trees and shrubs to provide sufficient moisture and prevent winter damage. Add a two inch layer of organic mulch such as shredded bark around the base of plants to retain soil moisture and regulate soil temperature.

Wood ashes contain phosphorous, potassium and calcium. It can be placed on vegetable gardens and flower beds.

Disasters Don't Wait. Make Your Plan Today!

By Soni Cochran, Extension Associate in Lancaster County



September is National Preparedness Month and this year's theme, Disasters Don't Wait. Make Your Plan Today, reminds us of the importance of preparing for disasters including unexpected financial emergencies. Whether it is an unexpected car repair, medical bill, family emergency or loss of income, these expenses can create a financial emergency for you and your family.

Just as we prepare for a natural disaster by creating a communication plan or emergency kit, you can also take steps to protect yourself in the event of a financial emergency. Here are some suggestions from <https://ready.gov>.

What You Can Do Now

- Start an emergency savings account. Start small by adding \$5 or \$10 a week. Teach your kids this skill so they are one-step ahead.
- Make a budget to estimate your expenses and income. Reduce debt by making regular payments (of at least minimum due) and pay bills on time to maintain a good credit rating.
- Review your insurance coverage including renters or homeowners, health and flood insurance. Flood insurance may take 30 days to go into effect. Review your insurance

policies regularly.

- Create and/or update your emergency plan. Learn more at <https://ready.gov>. For financial preparedness resources, download the Emergency Financial First Aid Kit (EFFAK). The EFFAK is a joint publication from Operation Hope and FEMA. EFFAK is a free resource designed to help reduce the

records.

- Keep a little cash in a secure location you can access in the event of an emergency. During a disaster, banks or ATM's may not be accessible.
- Work with a qualified financial counselor to learn more about how to organize your finances before and after a disaster.



Graphics from <https://ready.gov>

Teach children what to do in an emergency if they are at home or away.

financial impact of disasters on you and your family. To access EFFAK and to learn more, visit www.ready.gov/financial-preparedness.

- Keep important records safe including important receipts. You can store records digitally, in a password-protected format, on an external hard drive or flash drive. Store your devices in a fireproof and waterproof box or safe. Consider using a secure cloud-based service to store your records. To learn about encrypting information, visit the United States Department of Homeland Security website <https://us-cert.cisa.gov/ncas/tips/ST04-019>.
- Take photos or video of your property, household items and valuables in case you need to repair, replace or rebuild after a disaster. Store photos and videos in a safe location as you would other important

During a Disaster

- Use the emergency savings you set aside for essentials like food, gas and temporary lodging.
- Contact your credit card companies and lenders to learn about payment options so you can avoid late fees, interest charges and protect your credit. Negotiate with your lenders for payment extensions.
- Reach out for help — visit <https://disasterassistance.gov> to find out if you qualify for disaster relief. If there has been a disaster in your community, visit a Disaster Recovery Center for important resources and support from FEMA. You can also dial 2-1-1 for help finding resources in your community. Other assistance includes food banks and faith-based organizations.

After a Disaster

- Make a list of all your property damage and contact your insurance company as soon as possible.
- If it applies to your situation, file a flood insurance claim and work with your insurance adjuster and insurance agent

to go through the process.

- Prioritize your spending and take inventory of your credit cards.
- Turn off utilities if you are unable to live in your home.
- Be on the lookout for scams following a disaster.
- Research tax breaks to see if you qualify.

Disaster Financial Statistics

- Six out of 10 households in America experience at least one financial emergency each year (FEMA). For more information to help you and your family prepare for the possibility of a financial emergency or disaster, visit <https://ready.gov/prepare>.
- Almost half of all Americans would struggle to come up with \$400 to help cover an emergency.
- About one-third of American families do not have any savings.

Source: *Be Prepared for a Financial Emergency*, FEMA (August 2019): www.ready.gov/sites/default/files/2020-03/fema_be-prepared-financial-emergency.pdf

Extension Offers Training for Emergency Preparedness and Coping

Emergency Preparedness Training for Childcare Providers, 6 DHHS-approved in-service hours. This training helps childcare providers understand threats and risks that can affect their programs. Participants become familiar with recognized childcare emergency preparedness standards and how to carry them out. Contact Jaci Foged to inquire about this training by emailing jaci.foged@unl.edu.

Helping Children Cope with Crisis & Helping Caregivers Recover: Self-Care. Teachers, childcare providers and volunteers working with children following a disaster can be overwhelmed by the emotional toll a disaster takes on the children they serve, their staff, as well as their own personal lives. While many of those who work with children on a daily basis are experts in supporting children through stressful times, it can be very challenging to support children after a community-wide emergency. This course was designed to help equip child-serving professionals with tools to take care of children and themselves. 2 DHHS-approved in-service hours. Register for our free, Wednesday, Oct. 21, 6:30–8:30 p.m. (CST) training at <https://extension.unl.edu/statewide/douglas-sarpy/early-childhood-education-professional-development-programs>.

Upcoming Early Childhood Trainings

The Learning Child Team is currently offering a variety of free or low-cost VIRTUAL trainings for childcare providers. Visit this website to learn more about the trainings and to sign up! <https://extension.unl.edu/statewide/douglas-sarpy/early-childhood-education-professional-development-programs>.

Nitrate in Drinking Water

*By Becky Schuerman,
Extension Domestic Water/
Wastewater Associate*

Historical and current water quality monitoring shows nitrate is present in groundwater throughout much of Nebraska. It is when results are at or above the 10mg/L Maximum Contaminant Level (MCL) that hazardous health effects become a concern among humans and animals. Nitrate is colorless, odorless and tasteless, and the only way it can be detected in drinking water is through submitting a sample for laboratory testing.

Where Does Nitrate Come From and What is Nitrification?

Nitrogen is the nutrient applied for lawn and garden care and crop production to increase productivity. Feedlots, animal yards, septic systems and other waste treatment systems are additional sources of nitrogen that is carried in waste. Nitrogen occurs naturally in the soil in organic forms from decaying plant and animal material.

Bacteria in the soil convert various forms of nitrogen to nitrate, a nitrogen/oxygen ion. This process is called nitrification. A good example of nitrification is when bacteria within the soil converts the ammonia from a fertilizer into nitrite and then into nitrate. This is desirable since the majority of the nitrogen used by plants is absorbed in the nitrate form. However, nitrate is highly soluble and readily moves with water through the soil profile. If there is excessive rainfall or over-irrigation, nitrate will move below the plant's root

zone due to soil saturation and may eventually reach groundwater.

How We Ingest Nitrate and Potential Health Hazards

We ingest nitrates through the vegetables we eat, particularly leafy greens, and potentially through the water we drink. Nitrates in our groundwater going undetected is more of a concern with private drinking water wells, because they are often not tested regularly, whereas public water supplies are on a strict

moglobinemia (often referred to as "blue baby syndrome"), in which, due to the nitrites, blood lacks the ability to carry sufficient oxygen to the individual body cells. Infants under one year of age have the highest risk of developing methemoglobinemia. An older person who has a gastrointestinal system disorder resulting in increased bacteria growth may also be at greater risk than the general population. In addition, an individual who has a genetically impaired enzyme system for metabolizing methemoglobin, may be at greater risk as well.

The general population has a low risk of developing methemoglobinemia,



Photo by Sharon Skipton

testing schedule.

The acute health hazard associated with nitrate-contaminated drinking water that exceeds the 10mg/L (MCL) occurs when bacteria in the human or animal digestive system transforms nitrate to nitrite. The nitrite reacts with iron in the blood's hemoglobin, the substance in red blood cells that carries oxygen, to form methemoglobin. This creates the condition known as methemoglobinemia.

even when ingesting relatively high levels of nitrate/nitrite. Other health effects from long-term consumption of water containing high nitrate of varying concentrations, continue to be researched.

Concerns of Nitrate in Private Wells

If you have a new private well, initial nitrate and bacteriological tests by an accredited laboratory should be conducted

to determine the baseline concentrations. This is particularly important for households with infants, pregnant women, nursing mothers, elderly people or anyone with a compromised immune system. These groups are believed to be the most susceptible to nitrate health effects if they consume drinking water over the 10mg/L MCL. Livestock and pets within the same groups can also be negatively affected by high nitrate concentrations.

Activities at or near a well site can potentially contaminate the water supply, changing the nitrate concentration over time. In order to monitor for changes, it is highly recommended private drinking water wells be tested for nitrates and coliform (bacteria) annually, as well as any other contaminants of concern in your area.

What to Consider if Nitrates in Your Water Source Exceed 10mg/L MCL

If nitrate-nitrogen exceeds the 10mg/L MCL, you should voluntarily consider an alternative drinking water source or water treatment. Decisions should be based on a nitrate analysis by a reputable laboratory and after consulting with a physician to help evaluate the level of risk. You will need to use bottled water for preparing infant formula and cereal, as well as for drinking and cooking until a more permanent solution is in place. It may be possible to obtain a satisfactory alternate water supply by drilling a new well in a different location or a deeper well in a different aquifer, but there are no guarantees. Many choose drinking water treatment as an alternative. There are three

treatment methods that can be implemented to remove or reduce nitrate-nitrogen in drinking water: distillation, reverse osmosis and ion exchange.

Carbon filters and standard water softeners are common among households for drinking water treatment, but they do not remove or reduce nitrate-nitrogen, nor does boiling water on the stove top. In fact, when water is boiled, water is lost through evaporation, but the nitrates remain behind. This results in an increased nitrate-nitrogen concentration in the water that remains after prolonged boiling.

**This article contains some content originally written in 2011 by Sharon Skipton, retired Extension Educator.*



Photo by Jan Hyngstrom

Water Testing Kit

FOR MORE INFO

For further information on nitrates, see Nebraska Extension NebGuide "Drinking Water: Nitrate-Nitrogen" (G1784) at <https://extensionpublications.unl.edu/assets/pdf/g1784.pdf>.

For a current accredited laboratories list or to order your annual nitrate and/or coliform (bacteria) test kit, go to the Nebraska Public Health Environmental Laboratory site at <http://dhhs.ne.gov/Pages/Public-Health-Lab.aspx>. You can also call the lab at 402-471-3935 to order kits.



HEART OF 4-H VOLUNTEER AWARD

Tracy Pracheil

Lancaster County 4-H is proud to announce Tracy Pracheil of Lincoln as winner of the September "Heart of 4-H Award" in recognition of outstanding volunteer service.

Tracy has volunteered with Lancaster County 4-H for 8 years.

She started as a parent volunteer with the Clover Kids 4-H club and now she is leader of the Little Green Giants club. She has also helped staff shifts at the 4-H food stand at the Lancaster County Super Fair. Previously, Tracy volunteered with 4-H in Seward County and as a member of the Collegiate 4-H club at University of Nebraska–Lincoln.

"I enjoy helping young people prepare for their future," Tracy says. "4-H provides opportunities for youth to gain new skills and meet new people. The members in the Little Green Giants all attend different schools across Lincoln — so the club's projects and activities provide them a way to learn new things with new friends. I love seeing club members give informal presentations about something they really enjoy during club meetings. It's a great way to learn more about them and to see who else in the club shares their interests."

Note: Tracy also helps support Lancaster County 4-H through her job at the State 4-H Office as an Extension Educator focusing on multimedia learning.



HEART OF 4-H VOLUNTEER AWARD

Amy Vander Woude

Lancaster County 4-H is proud to announce Amy Vander Woude of Lincoln as winner of the October "Heart of 4-H Award" in recognition of outstanding volunteer service.

Amy has been involved with the Explorers 4-H club since it began

11 years ago, first as a parent volunteer, then assistant leader and now as leader. The last couple of years, she has helped her club with community service projects such as creating cards for the VA Clinic or donating books to a local home for children.

"I enjoy seeing and facilitating the growth and development in our youth, not only in my own club, but in those that I interact with each year during the fair as well as in the community," Amy says. "I am proud of the values that 4-H kids exhibit all through the year. To me, that is more important than any ribbon they receive. I also love that I am continually learning through projects that interest our club members. I enjoy watching a 4-H member try something new and really find success or learn from their experience. I've also found that the adult relationships provided through volunteering have been both fun and meaningful."



4-H Teen Council Invites New Members

Youth in 7th–12th grade — want to have so much fun making new friends, doing community service projects and other activities, that you won't realize you are learning important leadership skills? Join 4-H Teen Council!

Meetings are held the second Sunday of each month, September through April, at 3 p.m. at the Lancaster Extension Education Center, 444 Cherrycreek Road, Lincoln. Upcoming meetings will be Oct. 11 and Nov. 8. Join at any time!

For more information or to join, contact Tracy Anderson at tracy.anderson@unl.edu or 402-441-7180.

Dog Club Accepting New Members, Starts Up in January

The 4 On the Floor dog 4-H club for youth ages 9–18 will start on Monday, Jan. 4, 2021 at the Lancaster Event Center Fairgrounds – 4-H office located by Pavilion 3. Meetings will be held every Monday at 6:30 p.m. and last about an hour. Summer schedule (after May) to be determined.

The 4-H dog project is fun and fulfilling. Training a dog is a lifelong skill! Youth should be able to maintain general control of their dog and their dog should not show aggressive behaviors before joining this club. A training collar (also known as a choke chain) will be required and a 6-foot leather leash. All dogs must have updated vaccination records and a copy must be provided to the club leader.

If you are interested in joining this club, for more information or to RSVP, contact club leader John Croghan at 402-957-3651 by Dec. 25.

Nominate your favorite 4-H volunteer by submitting the form available online at <http://lancaster.unl.edu/4h> or at the Extension office. Nominations of co-volunteers welcome.



FIND OUT HOW YOUTH AGES 5-18 CAN JOIN 4-H! ADULTS CAN HELP YOUTH GROW BY VOLUNTEERING!

4-H INFORMATION NIGHT

Tuesday, Oct. 6 • 6-7:30pm

Rain Date: Wednesday, Oct. 7

Lancaster Extension Education Center
444 Cherrycreek Rd., Lincoln



Fun door prizes!

To accommodate social distancing, this event will be an open house format and a blend of indoor/outdoors. Arrive no later than 7 p.m. Please call 402-441-7180 or check <http://lancaster.unl.edu/4h> on day of the event to confirm it will be held as planned. Current directed health measures will be followed, including wearing face coverings and a health screening check-in.

Several 4-H'ers will showcase their projects such as dogs, rabbits, chickens, llamas, piglets and static exhibits!

YOU DO NOT NEED TO ATTEND 4-H INFORMATION NIGHT TO GET INVOLVED — fill out the interest form at <http://lancaster.unl.edu/4h/interestform> or call 402-441-7180.



4-H Announcements

FOR ENROLLED 4-H'ERS OR 4-H VOLUNTEERS

See the 4-H e-newsletter at <https://go.unl.edu/Lan4Henews> for details. The 4-H Youth Development Program is open to all youth ages 5-18 and free to join in Lancaster County. If interested in joining or volunteering, call 402-441-7180.

HORSE AWARDS NIGHT, OCT. 1

For 4-H families in the horse program. Scheduled for Thursday, Oct. 1, 6:30 p.m., location TBA or will be held virtually. Watch for confirmed details.

FALL 4-H LEADER UPDATE, OCT. 29

For 4-H leaders and volunteers helping with clubs and independent members. Thursday, Oct. 29, 9 a.m. or 6:30 p.m. at the Lancaster Extension Education Center. MUST register by Monday, Oct. 26 by calling 402-441-7180 or emailing kristin.geisert@unl.edu.

PAPER BASKET WORKSHOP, NOV. 7 OR 14

For 4-H'ers ages 8 and up. Adults encouraged to help. Saturday, Nov. 7 or 14 (watch for confirmed date) from 9 a.m.-12 noon at the Lancaster Extension Education Center. Bring a needle-nose wire cutter. Register at least 1 week in advance by calling 402-441-7180 or emailing kristin.geisert@unl.edu.

4-H COUNCIL SEEKS NEW MEMBERS

Lancaster County 4-H Council is composed of youth (9th grade or higher) and adults working together. Meetings are held the first Tuesday of each month at 6 p.m. If interested in serving on 4-H Council, complete the Application for New Members online at <http://lancaster.unl.edu/4h/council>.

State 4-H Horse Fun Show Results

The 2020 State 4-H Horse Exposition was changed to a modified virtual show called the State 4-H Horse Fun Show. Several of the contests usually held at the state 4-H Horse Stampede were combined into this event. Here are the Lancaster County 4-H youth purple ribbon winners. Complete results are at <http://4h.unl.edu/horse/state-expo>.

SENIOR SHOWMANSHIP

Lillie Beach (6th), Emmi Dearmont, Sidney Froistad

JUNIOR SHOWMANSHIP

Harper Rosenstiel (Ch), Caraline Higgins (8th), Elizabeth Funk (10th)

ELEMENTARY SHOWMANSHIP

Kiara Eppenbach (5th)

SENIOR PUBLIC SPEAKING

Sidney Froistad (Ch), Lilee Chevalier (Res Ch, blue ribbon)

JUNIOR ART

Lilee Chevalier (3rd)

ELEMENTARY PHOTOGRAPHY

Brooklyn Blunt (Ch), Sydney Fijolek (Res Ch)

SENIOR HUNT SEAT EQUITATION

Emmi Dearmont (Res Ch)

HUNTER HACK

Emmi Dearmont (3rd)

SENIOR HUNTER UNDER SADDLE

Sidney Froistad (5th)

JUNIOR HUNTER UNDER SADDLE

Morgan Roof (3rd)

BAREBACK PLEASURE

Sidney Froistad (3rd)

BAREBACK EQUITATION

Sidney Froistad (3rd), Emmi Dearmont (4th), Harper Rosenstiel (5th), Lillie Beach (6th), Kali Maytum

SENIOR HORSEMANSHIP

Sidney Froistad (5th)

JUNIOR HORSEMANSHIP

Harper Rosenstiel (4th)

JUNIOR REINING

Chase McInteer (Ch), Kenna Morgan

JUNIOR WESTERN PLEASURE

Harper Rosenstiel

WESTERN PLEASURE PONIES

Taylor Root (Res Ch)

MARE HALTER 6-10 YR OLDS

Skylar Frisbie (3rd), Scarlett Battles (5th), Brooklyn Blunt

MINIATURE HALTER GELDING

Kiara Eppenbach (Res Ch, blue ribbon)



Junior Reining Champion



Elementary Photography by Sydney Fijolek earned Reserve Champion

4-H at Super Fair a Blend of Virtual and In-Person

This year's Lancaster County Super Fair focused solely on 4-H & FFA youth participation, which were a blend of virtual and in-person exhibits and events July 30–August 2 at the Lancaster Event Center Fairgrounds. The planned 150th celebration was postponed to 2021.

Over 400 4-H/FFA exhibitors showcased over 2,700 exhibits (including static exhibits, Clover Kids, animals and contest entries). The Super Fair provides 4-H youth an opportunity to showcase their completed 4-H projects.

In planning how 4-H activities at Super Fair would look like during a pandemic, 4-H staff asked for input from 4-H parents, members and volunteers. 305 people completed the survey. Based on this input and the fact that many key 4-H volunteers and super-intendents are considered at increased risk for COVID-19, static exhibits and many contests were changed from in-person to virtual format.

Static exhibits were submitted, judged and exhibited through web-based software. Families took photo(s) and/or video(s) of each

exhibit based on specified requirements for each project.

Most contest, Clover Kids Show & Tell and some animal show entries were submitted as videos. A special Cyber Fashion Show video was created from submitted videos.

Livestock and horse shows were held in-person with many modifications to accommodate health guidelines, including using a show-and-go format, daily health checks, wrist-banding exhibitors and limiting the number of wristbands per day for exhibitor's family members. Lancaster County 4-H livestreamed nearly all in-person events.

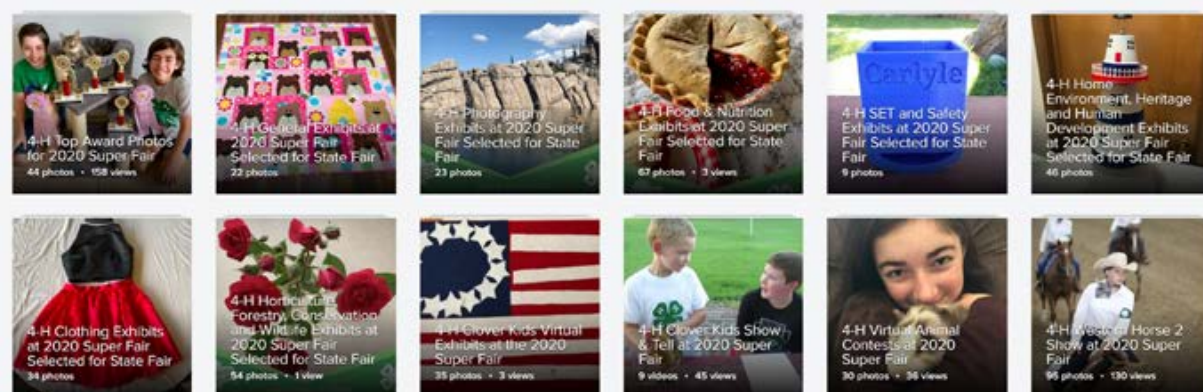
4-H staff appreciates the cooperation of 4-H/FFA families as they adapted to the modifications and followed health guidelines. Thank you to all the volunteers and sponsors who helped make 4-H & FFA at this year's virtual and in-person events possible! A special thank you to Agricultural Society board members and Lancaster Event Center fairgrounds staff who worked closely with 4-H staff to make the fair possible during a pandemic!

Livestock Scholarship Recipients

The Lancaster County 4-H Livestock Booster Club awards two \$500 college scholarships each year which are presented at the Lancaster County Super Fair. Since this year's 4-H/FFA Livestock Premium Auction was canceled, the scholarships were announced at livestock shows. A portion of the proceeds from previous auctions funded these scholarships. This year's scholarship recipients were Sarah Dilley and Amy Egelhoff.

4-H Public Online Showcases

Watch archived livestreams and see other online public showcases such as online media slideshows, Cyber Runway Fashion Show video and photos on Flickr. All of these are linked at <http://lancaster.unl.edu/4h/publicshowcases>.



In livestock showmanship classes, youth are judged on their ability to handle and present their animal. In market, breeding and other classes, animals are judged on their performance (e.g. rate of gain) or conformation (e.g. structure, muscling and balance). Pictured is 4-H/FFA Beef junior showmanship.



The 4-H poultry show continues to grow, following the national trend of backyard flocks gaining popularity. Pictured is the judge evaluating the American Wyandotte class.



Lancaster County has the largest 4-H county fair horse show in the state. This year, Horse Shows were reduced from 6 to 5 days and some events were submitted virtually. 96 horse exhibitors competed in 679 total entries. Pictured is Horse Dressage.



Table Setting participants submitted two videos: a 5-minute presentation for judges and a short video for the public. Pictured is Birthday Junior.



Super Fair 4-H/FFA Top Results

4-H/FFA complete results, photos and videos are online at <http://lanaster.unl.edu/4h/fair>



Photos submitted by 4-H families



Top Static Exhibits

Ch=Champion; Res=Reserve

GENERAL AREAS

Poster: Kylie Hansen
Quilt Ch: Eliana Babcock
Quilt Res Ch: Abigail Kreifels

SCIENCE, ENGINEERING & TECHNOLOGY

Rocketry: Adam Gabel
Woodworking: Jacob Bauman
Safety: Daria Knezevic
Engineering: Ethan Gabel

FOOD & NUTRITION

Yeast Product: Clara Johnson
Quick Bread: Kamryn Wanser
Food Preservation: Morgan Gabel
Cake or Pie: Ella Hendricksen
Cookie: Reagan Tonkin

HUMAN DEVELOPMENT

Human Development: Clare Bauman

HOME ENVIRONMENT

Top 3: Josie Lahm
Top 3: Madelyn Kreifels
Top 3: Toby Becker

HERITAGE

Heritage: Clare Bauman

PHOTOGRAPHY

Level 1: Emily Bauman
Level 2: Keren Carlson
Level 3: Riley Peterson
Theme Print: John Sump

CLOTHING

STEAM 1 Clothing: Monica Bauman
STEAM 1 Pillow: Grace Mentzer
STEAM 2 Clothing: Vanessa Peterson
STEAM 3 Clothing: Eliana Babcock
Beyond the Needle: Hayley Marshall
Accessory: Brianna Pittman
Fiber Arts - Crocheting: Clare Bauman
Fiber Arts - Knitting: Madelyn Kreifels
Shopping in Style: Eliese Schwinck

HORTICULTURE

Vegetable: Evan Mittan-DeBuhr
Herb: Kylie Hansen
Annual Flower: Evan Mittan-DeBuhr

Perennial Flower: Ella Hendricksen

Rose: Laurel Frogge
Specimen Plant: Andrew Frain

CONSERVATION & WILDLIFE AND FORESTRY

Conservation and Wildlife: Ella Hendricksen
Forestry: Catherine Polk

Top Contest Awards

LIFE CHALLENGE

Sr Ch: Lilee Chevalier
Sr Res Ch: Melanie Wiggins
Jr Ch: Emily Bauman
Jr Res Ch: Evan Mittan-DeBuhr

PRESENTATIONS

Premier Presenter: Kylie Hansen
Sr Ch: Kylie Hansen
Sr Res Ch: Clare Bauman
Int Ch: Emily Bauman
Int Res Ch: Mary Kate Ingracia
Jr Ch: Parker Hansen
Jr Res Ch: Monica Bauman
Special Topic: Kamryn Wanser
Film Fest (Digital Video): Clare Bauman

FASHION SHOW

Top 5 Ch: Eliana Babcock
Top 5 Res Ch: Clare Bauman
Top 5: Clara Johnson
Top 5: Madelyn Kreifels
Top 5: Mindy Bartels
Shopping in Style: Clara Johnson
Beyond the Needle: Clara Johnson
Make One/Buy One Level 1: Monica Bauman
Make One/Buy One Levels 2 & 3: Abigail Kreifels
Clothing Level 1 (Complete Outfit): Kamryn Wanser
Upcycled Garment: Emily Bauman
Apron: Kaylee Boysen
Garment(s) Made for Others: Clare Bauman
Attention Shoppers: Dayton Jons
Attention Shoppers: Monica Bauman

PLANT SCIENCE

Horticulture: Kaily Wesely
Tree Identification: Claire Polk
Grass & Weed Identification: Kaily Wesely

see SUPER FAIR TOP RESULTS on next page

Super Fair Top Results

continued from previous page

TABLE SETTING

Picnic Sr: Bridget Clarke
Picnic Int: Abby Kruse
Picnic Jr: Sydney Kruse
Casual Sr: Kaylie Waite
Casual Jr: Kathryn Weaver
Formal Sr: Ella Hendricksen
Birthday Int: Clare Bauman
Birthday Jr: Alexa Smith

Top Animal Exhibits

ELITE SHOWMANSHIP

1st Place: Sarah Dilley
2nd Place: Madysen Cox
3rd Place: Brett Heinrich
4th Place: Corianna Kubicek
5th Place: Heather Lange

BEEF

Showmanship Supreme Ch: Madysen Cox
Showmanship Sr Ch: Madysen Cox
Showmanship Int Ch: Clara Johnson
Showmanship Jr Ch: Josie Johnson
Breeding Heifer Supreme Ch: Kyson Gana
Breeding Heifer Supreme Res Ch: Allison Walbrecht
Feeder Calf Supreme Ch: Madysen Cox
Feeder Calf Supreme Res Ch: Kaelin Kuebler
Market Animal Supreme Ch: Brett Heinrich
Market Heifer Grand Ch: Brett Heinrich
Market Heifer Res Grand Ch: Blake Mueller
Market Steer Grand Ch: Brett Heinrich
Market Steer Res Grand Ch: Clara Johnson
Lancaster Born and Raised - Breeding Ch: Emberlin Johnson
Lancaster Born and Raised - Market Ch: Blake Mueller

BUCKET CALF

Bucket Calf Int Ch: Kolter Wellman
Bucket Calf Int Res Ch: Khloe Cuttlers
Bucket Calf Jr Ch: Kyler Plugge
Bucket Calf Jr Res Ch: Kayla Isaacs

SHEEP

Showmanship Sr Ch: Sarah Dilley
Showmanship Sr Res Ch: Catherine Hytrek
Showmanship Int Ch: Auren Burkey
Showmanship Int Res Ch: Chase McInteer
Showmanship Jr Ch: Josie Johnson
Showmanship Jr Res Ch: Ian Lorensen
Market Lamb Grand Ch: Cole Cooper
Market Lamb Res Grand Ch: Michael Lockee
Lancaster Born and Raised Market Lamb Ch: Auren Burkey
Lancaster Born and Raised Market Lamb Res Ch: Chase McInteer
Breeding Ewe Supreme Ch: Sarah Dilley

SWINE

Showmanship Sr Ch: Brett Heinrich
Showmanship Int Ch: Ellie Volk
Showmanship Jr Ch: Josie Johnson
Market Swine Grand Ch: Brett Heinrich
Market Swine Res Grand Ch: Grace Fahleson
Pick-a-Pig Market Swine Grand Ch: Londyn Ayres
Pick-a-Pig Market Swine Res Grand Ch: Olivia Vanderford
Breeding Gilt Ch: Ellie Volk
Breeding Gilt Res Ch: Josie Johnson
Pen of Three Ch: John Sump
Pen of Three Res Ch: Clara Johnson

DAIRY GOAT

Showmanship Sr Ch: Corianna Kubicek
Showmanship Jr Ch: Ezra Kubicek
Dairy Goat Supreme Ch: Corianna Kubicek
Dairy Goat Res Supreme Ch: Corianna Kubicek

MEAT GOAT

Showmanship Sr Ch: Sarah Dilley

Showmanship Sr Res Ch: Heather Lange
Showmanship Int Ch: Aleyna Cuttlers
Showmanship Int Res Ch: Samuel Bogle
Showmanship Jr Ch: Khloe Cuttlers
Showmanship Jr Res Ch: Afton Byelick
Market Goat Overall Grand Ch: Sarah Dilley
Market Goat Overall Res Grand Ch: Sarah Dilley
Breeding Goat Overall Ch: Sarah Dilley
Breeding Goat Overall Res Ch: Sarah Dilley
Lancaster Born & Raised Ch: Clara Johnson

LLAMA/ALPACA

Showmanship Int Ch: Emily Rhodes
Showmanship Jr Ch: Molly Rhodes

RABBIT

All-Around Showman Award Ch: Rhianna Metcalf
All-Around Showman Award Res Ch: Marylynn Rauert
Showmanship Sr Ch: Rhianna Metcalf
Showmanship Int Ch: Hannah Thomson
Showmanship Jr Ch: Marylynn Rauert
Best 6 Class Ch: Holly Bowen
Best 4 Class Ch: Marylynn Rauert
Judging Contest Sr Ch: Rhianna Metcalf
Judging Contest Int Ch: Hannah Thomson
Judging Contest Jr Ch: Lawrence Rauert
Breed ID Contest Sr Ch: Rhianna Metcalf
Breed ID Contest Int Ch: Mackenzie Cordes
Breed ID Contest Jr Ch: Marylynn Rauert

HOUSEHOLD PETS

Best Guinea Pig: Rachel Koch
Best Gecko: Leah Christline
Best Fish: Kamryn Wanser
Best Bird: Joseph Donlan

POULTRY

Showmanship Sr Ch: Sarah Lange
Showmanship Jr Ch: Marylynn Rauert
Best of 4-H Poultry Show: Sierra Wilson
Large Fowl Grand Ch: Zachary Pittman
Water Fowl Grand Ch: Zachary Pittman
Bantam Grand Ch: Noah Jelinek

DOG

Static Exhibit: Alexa Smith
Skill-A-Thon Jr: Kamryn Wanser
Skill-A-Thon Sr: Emmi Dearmont

CAT

Overall Best Cat in Show: Jonah Calcara
Showmanship - Intermediate Ch: Livi Calcara
Showmanship - Junior Ch: Jonah Calcara

HORSE

English (Hunt Seat) Equitation Sr Ch: Cadi Wilbeck
English (Hunt Seat) Equitation Jr Ch: Harper Rosenstiel
English (Hunt Seat) Equitation Novice Ch: Claire Tucker
English (Hunt Seat) Equitation Elem Ch: Hope Baumert
English (Hunt Seat) Equitation Walk/Trot Ch: Emery Williams
English Discipline Rail Sr Ch: Clara Bradbury
English Discipline Rail Jr Ch: Skylar Frisbie
Reining Sr Ch: Clara Bradbury
Reining Jr Ch: Chase McInteer
Reining Elem Ch: Tanner McInteer
Trail Sr Ch: Clara Bradbury
Trail Jr Ch: Chase McInteer
Trail Elem Ch: Josie Johnson
Miniature Showmanship Jr/Sr Ch: Ava Smith
Miniature Showmanship Elem Ch: Kiara Eppenbach
Western Horsemanship Sr Ch: Sidney Froistad
Western Horsemanship Jr Ch: Chase McInteer
Western Horsemanship Novice Ch: Savannah Wubbels
Western Horsemanship Elem Ch: Hope Baumert
Western Horsemanship Walk/Trot Ch: Emery Williams
Western Discipline Rail Sr Ch: Cadi Wilbeck
Western Discipline Rail Jr Ch: Chase McInteer
Groom and Care Ch: Kiara Eppenbach

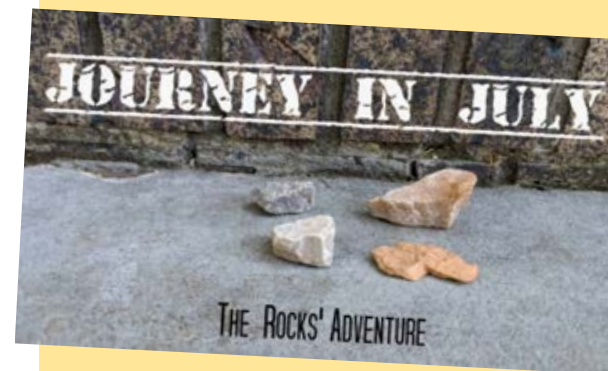
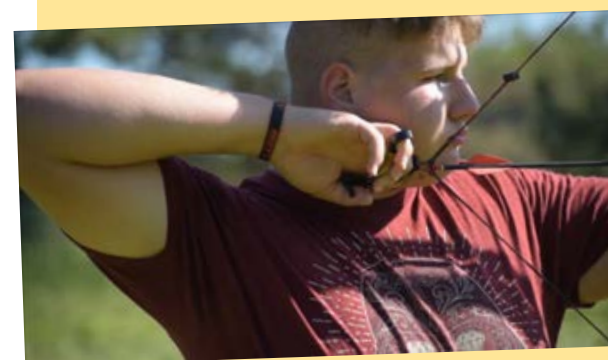
Additional horse awards will be announced at 4-H Horse Awards Night.

Two Lancaster 4-H'ers Recognized at National 4-H Film Festival

4-H youth ages 11–18 from 17 states gathered online Aug. 1–2 for the 10th annual FilmFest 4-H, a national film festival for youth filmmakers, visual artists, actors, as well as any 4-H'ers interested in learning more about the film industry. In addition to submitting their own digital video creations, participants also engaged in educational film industry workshops. Two Nebraska 4-H members were recognized for their films — both are Lancaster County youth!

- Riley Peterson (15) of Lancaster County was awarded 2nd Place Documentary for his video titled “Inspiring 4-H Archers” (view at <https://youtu.be/yPFJt-zcgO4?t=778>).
- Andrew Donlan (12) of Lancaster County received 2nd Place Animation with his stop-motion film, “Journey in July” (view at <https://youtu.be/yPFJt-zcgO4?t=85>).

Andrew said, “I always thought of animation and filmmaking as fun hobbies. After spending the weekend learning from professionals in the film industry, I can see how this could be an exciting career for me.”





State Fair 4-H Top Results

Congratulations to the Lancaster County 4-H'ers who showcased their projects at the 2020 Nebraska State Fair! Due to COVID-19, the State Fair was modified to focus primarily on showcasing 4-H & FFA events and exhibits.

4-H static exhibits were displayed in booths by county — but not judged, though some exhibits were selected for special recognition and best of show! 4-H contests and animal shows were held in-person during the first weekend of the State Fair.

Here are the Lancaster County 4-H youth winners of purple ribbons, special recognition and other special awards. Complete results are online at www.nebraska4hresults.com.

Top Static Exhibits

BEST OF SHOW

Clare Bauman Best of Show - Human Development
Madelyn Kreifels Best of Show - Clothing

SPECIAL RECOGNITION

Clare Bauman Special Recognition - Clothing
Special Recognition - Heritage
Jacob Bauman Special Recognition - Clothing
Ella Hendricksen Special Recognition - Citizenship
Mary Kate Ingracia Special Recognition - Clothing
Abigail Kreifels Special Recognition - Quilt Quest
Madelyn Kreifels Special Recognition - Clothing
Keaton Kroemer Special Recognition - Entomology
Kolbee Kroemer Special Recognition - Entomology
Carley Parrott Special Recognition - Home Environment
Kamryn Wanser Special Recognition - Citizenship

PHOTOGRAPHY SPECIAL SELECTIONS

Micah Pracheil Photography Selected for Display During the Next Year at the UNL Animal Science Building

Top Contest Awards

SPECIAL AWARDS

Clare Bauman Outstanding FilmFest Presenter (1 of 2 selected)
Vanessa Peterson Outstanding FilmFest Presenter (1 of 2 selected)

PURPLE RIBBON WINNERS

Ellie Babcock 4-H Fashion Show: Constructed STEAM Clothing 3 Garment
Mindy Bartels 4-H Fashion Show: Constructed STEAM Clothing 3 Garment
Clare Bauman 4-H FilmFest (Digital Video) Contest
Ella Hendricksen 4-H Fashion Show: Shopping in Style Purchased Outfit and Written Report
Vanessa Peterson 4-H FilmFest (Digital Video) Contest
Riley Peterson 4-H FilmFest (Digital Video) Contest
Micah Pracheil 4-H FilmFest (Digital Video) Contest
Kylie Hansen Culinary Challenge - Culinary Challenge - Senior (Team with Abby Kruse)
Abby Kruse Culinary Challenge - Culinary Challenge - Senior (Team with Kylie Hansen)

Top Animal Exhibits

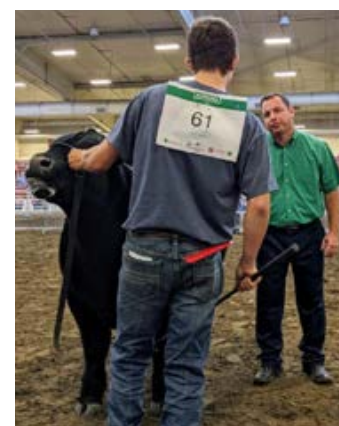
SPECIAL AWARDS

Cole Cooper Beef: Champion Steer - Crossbred Division IV
Meat Goat Reserve Champion Division I Market Goat
Sheep: Champion Division III: Natural Color Market Lambs
Heather Lange Meat Goat: Reserve Champion Registered Doe
Ian Lorenson Sheep: Champion Division VI: White Face Influence Market Lambs
TJ Mueller Beef: Champion Composite Charolais Breeding Heifer
Brianna Pittman Poultry: Production Division Champion

Zachary Pittman Poultry: Best of Show - Egg Exhibit
Rabbit: Best of Breed
Allison Walbrecht Beef: Reserve Champion Commercial Breeding Heifer

PURPLE RIBBON WINNERS

Samuel Bogle Meat Goat: Breeding Meat Goat - Commercial Yearling Does (born between 9/1/2018 and 8/31/2019)
Auren Burkey Sheep: Breeding Sheep - Commercial Meat Breed Ewe Lambs
Cole Cooper Beef: Market Beef - Crossbred Steers
Beef: Market Beef - Crossbred Steers
Meat Goat: Market Meat Goat - Market Goats
Sheep: Market Sheep - Crossbred Market Lambs
Sheep: Market Sheep - Natural Color Market Lambs
Khloe Cuttlers Meat Goat: Breeding Meat Goat - Registered (AGBA) Yearling Does (born between 9/1/2018 to 8/31/2019)
Meat Goat: General Classes - Intermediate Meat Goat Showmanship
Sarah Dilley Meat Goat: Market Meat Goat - Market Goats
Meat Goat: Market Meat Goat - Market Goats
Meat Goat: Market Meat Goat - Market Goats
Sheep: Breeding Sheep - Commercial Meat Breed Ewe Lambs
John Donlan Rabbit: Breeding Rabbits - Holland Lop Sr. Buck
Andrew Frain Rabbit: Breeding Rabbits - Mini Lop Jr. Doe
Kaden Gana Beef: Angus Breeding Beef - Angus Heifer Calves Calved Sept./Oct. 2019
Kyson Gana Beef: Angus Breeding Beef - Angus Yearling Heifers Calved Jan./Feb. 2019
Beef: Charolais Breeding Beef - Charolais Yearling Heifers Calved Jan./Feb. 2019
Brett Heinrich Beef: Market Beef - Crossbred Steers
Clara Johnson Beef: General Classes - Senior Beef Showmanship
Beef: Market Beef - Crossbred Steers
Beef: Market Beef - Crossbred Steers
Beef: Market Beef - Crossbred Steers
Poultry: General Classes - Intermediate Poultry Showmanship
Michael Lockee III Sheep: Market Sheep - Crossbred Market Lambs
Sheep: Market Sheep - Hampshire Market Lambs
Sheep: Market Sheep - White Face Influence Market Lambs
Chase McInteer Sheep: Market Sheep - Crossbred Market Lambs
Sheep: General Classes - Intermediate Sheep Showmanship
TJ Mueller Beef: Composite Charolais Breeding Beef - Composite Charolais Yearling Heifers Calved March/April 2019
Brianna Pittman Meat Goat: Breeding Meat Goat - Commercial Yearling Does (born between 9/1/2018 and 8/31/2019)
Poultry: Egg Production Trios - Egg Production Trio
Zachary Pittman Meat Goat: Breeding Meat Goat - Commercial Yearling Does (born between 9/1/2018 and 8/31/2019)
Poultry: Eggs - One Dozen White Eggs
Poultry: Feather Legged Bantams - Booted, NonBearded Mille Fleur Cockerel
Poultry: Geese - Light Tufted Roman White Young Female
Poultry: Geese - Light Tufted Roman White Young Male
Rabbit: Breeding Rabbits - English Spot Sr. Buck
Poultry: Feather-Legged Bantams - Langshan, Black Pullet
Rabbit: Breeding Rabbits - Mini Rex Sr. Doe
Rabbit: General Classes - Intermediate Rabbit Showmanship
Marylynn Rauert Meat Goat: General Classes - Intermediate Meat Goat Showmanship
Burke Settles Beef: Commercial Breeding Beef - Commercial Breeding Heifers Calved March/April 2019
Allison Walbrecht Beef: Commercial Breeding Beef - Commercial Breeding Heifers Calved May/June 2019
Beef: General Classes - Senior Beef Showmanship
Swine: General Classes - Senior Swine Showmanship
Ellie Volk Swine: General Classes - Senior Swine Showmanship



Nebraska Extension in Lancaster County
& Lancaster Extension Education Center Conference Facilities
444 Cherrycreek Road, Ste. A, Lincoln, NE 68528
402-441-7180 • lancaster.unl.edu

Extension is a Division of the Institute of Agriculture and Natural Resources
at the University of Nebraska–Lincoln cooperating with the Counties and the
United States Department of Agriculture.

Nebraska Extension educational programs abide with the nondiscrimination
policies of the University of Nebraska–Lincoln and the United States
Department of Agriculture.

NEBLINE

NEBLINE is typically published monthly (except December).
Subscriptions via mail are free to Lancaster County residents.
There is an annual \$5 mailing and handling fee to addresses in zip
codes other than 683—, 684—, 685—, 68003, 68017 and 68065.

Would You Prefer Digital?

E-newsletter and PDF versions are at lancaster.unl.edu/nebline

Subscribe to Digital or Print Versions

Subscribe/unsubscribe to the print and/or digital versions by going
to lancaster.unl.edu/nebline or by calling 402-441-7180.

Copyright ©2020

NEBLINE articles may be reprinted without special permission if the source
is acknowledged as “Nebraska Extension in Lancaster County NEBLINE.”
If the article contains a byline, please include the author’s name and title.

Reference to commercial products or trade names is made with the understanding that no
discrimination is intended and no endorsement by the University of Nebraska–Lincoln is implied.



EXTENSION CALENDAR

All events will be held at the Lancaster Extension Education Center,
444 Cherrycreek Road, Lincoln, unless otherwise noted.

September

- 28 4-H EGG Cam Day 7 Live Candling Session, go.unl.edu/eggcam . . 1 p.m.
29 GROBigRed Virtual Learning — Putting the Garden to Bed 7 p.m.
30 4-H Council’s Alumni Scholarship Deadline

October

- 1 4-H Horse Awards Night, *location TBA or will be virtual* 6:30 p.m.
5 4-H EGG Cam Day 14 Live Candling Session, go.unl.edu/eggcam . 1 p.m.
6 4-H Information Night 6–7:30 p.m.
7 4-H Information Night Rain Date 6–7:30 p.m.
4–10 National 4-H Week
8 Pesticide Applicator Neb. Department of Agriculture “Appointment
Only” Testing Session. 9 a.m.–2 p.m.
9 Extension Board Meeting 8 a.m.
11 4-H Teen Council Meeting 3 p.m.
12–13 4-H EGG Cam Live Hatching, go.unl.edu/eggcam 1 p.m.
13 4-H Council Meeting. 6 p.m.
29 Pesticide Applicator Neb. Department of Agriculture “Appointment
Only” Testing Session. 9 a.m.–2 p.m.
29 4-H Leader Trainings 9 a.m. & 6:30 p.m.

EXTENSION NEWS

2020 UNL Service Awards

Recently, University of Nebraska–Lincoln staff reaching an
anniversary year of employment were honored for their years
of service to the university. The following Nebraska Extension
in Lancaster County staff were recognized:

- **Mary Jane Frogge**, Extension Associate — 30 years
- **Kristen Houska**, Extension Educator — 10 years
- **Meredith Kuca**, Extension Assistant — 5 years
- **Brianna Frickenstein**, Extension Associate — 5 years

Lancaster County Years of Service

Recently, **Deanna Covault**, a Lancaster County
employee (Clerk Typist II) at Nebraska Extension in Lancaster
County, was recognized for 20 years of service to Lancaster
County.

UNL CASNR Visit Day, Oct. 10

University of Nebraska–Lincoln’s College of Agricultural
Sciences and Natural Resources (CASNR) is hosting its annual
Experience the Power of Red Visit Day for students grades 8–12
on Saturday, Oct. 10, 9 a.m.–2 p.m. There is no charge. Learn how
CASNR prepares students for careers in everything from animals
to plants, soil to climate, golf to business, mechanization to leader-
ship, and food to forensic science. Register at <http://casnr.unl.edu/visitday> by Sept. 25. For more information, call 402-472-0615.

NEBLINE New Look

Due to changes in printing services, the
NEBLINE newsletter has been redesigned. NEBLINE will
usually be 8 pages, though this issue is 12 pages to
accommodate the Super Fair and State Fair 4-H results.

Would You Prefer E-Newsletter?

NEBLINE e-newsletter and PDF versions are at
lancaster.unl.edu/nebline. Subscribe by going
to lancaster.unl.edu/nebline or
by calling 402-441-7180.

4-H Council Alumni Scholarship

Lancaster County 4-H
Council sponsors a \$500
4-H alumni scholarship.
Must be a Lancaster County
4-H alumni at least one year
post-high school and has
continued involvement in
4-H program as a leader or
volunteer. Application
form is available at
<http://go.unl.edu/4has> and
at the Extension office.
Deadline is Sept. 30.

Deadline For Extension Board Applications, Nov. 1

The Lancaster County Board of Commissioners seek community members to serve on the
Lancaster County Extension Board. Vacancies will be filled with three year appointments beginning
in January 2021. Extension Board members advocate for and assist Extension staff in focus areas
such as: 4-H youth development; beef systems; community environment; community vitality;
cropping & water systems; food, nutrition & health; and the learning child. The board meets
monthly (usually the second Friday of the month at 8 a.m.).

Registered Lancaster County voters interested in serving should complete an Extension Board
application by Nov. 1. Additional information and an application can be obtained from: Nebraska
Extension in Lancaster County, 444 Cherrycreek Road, Suite A, Lincoln, NE 68528 or by calling
402-441-7180. Applications are also online at <https://lancaster.unl.edu/extensionboard>.