

Health Equity Coalition

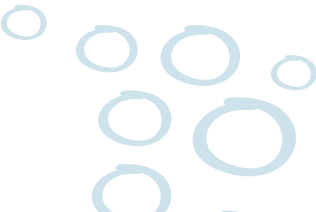


Welcome!

**Tell us about you in the Zoom Chat:
name, organization and role + one
thing of beauty within your view**

Group Introductions

Who's here today?

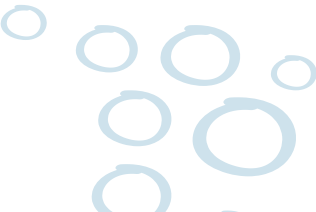


Preferred Name + Pronouns	Organization you are representing today & Your role within it	What is an item of beauty within your view?
Kandra King (she, her, hers)	Community Action Head Start, Health Services Manager	Tiny humans learning and growing
Jodi-Renee Giron (she/her)	LPS Community Learning Centers, Community Builder	A piece of art painted by my high school son
Emily Trauernicht (she/her)	LPS Community Learning Centers, Community Builder	My plants!
Courtney Eitzmann (she/her)	Nebraska Extension, Extension Assistant	Sunshine!



Group Introductions

Who's here today?



Preferred Name + Pronouns	Organization you are representing today & Your role within it	What is an item of beauty within your view?
Jenee Kucera She/her	LPS Community Learning Centers	
Molly Petrik She/her	Bluestem Health	
Joni Pagenkemper	Bluestem Health	





Emily Gratopp

- Norfolk Native; lived in Lincoln since 2006
- Love Lincoln for “small town feel”, diversity & celebrations of cultures
- Have 3 kids ages 4, 4, and 1 that I want to raise in Lincoln
- Want to see our community thrive, embrace differences, join together to create health equity

- Bachelor’s in Nutrition Science
- Master’s in Leadership Education & Health Promotion
- Worked for Extension for 7 years



Pam Whisenhunt

- Lived in Lincoln the past 25 years
- Husband, children and grandchildren live in Lincoln
- Retired Active National Guard with 30 years of service
- Have worked on legislative initiatives over for 20 years
- Passionate about supporting healthy lifestyles and community service
- Bachelor's Degree in Public Administration

- Master Health Volunteer



Youth Master Health Volunteer

Crystal Xu

- Grew up in Lincoln, graduated Lincoln East High School in 2019
- Currently a sophomore at Yale University
- Studying chemistry, plan to pursue a career in the medical field
- Certified as an EMT and drone pilot
- Enjoys community service and volunteering
- Hopes to promote health equity in Lincoln

Health Equity



“Health equity means that everyone has a fair and just opportunity to be as healthy as possible.

This requires removing obstacles to health such as poverty, discrimination, and their consequences, including powerlessness and lack of access to good jobs with fair pay, quality education and housing, safe environments, and health care.”

- Robert Wood Johnson Foundation



PAVING THE ROAD TO HEALTH EQUITY

Health Equity
is when everyone has the opportunity
to be as healthy as possible



Programs
Successful health
equity strategies



Measurement
Data practices to support
the advancement of
health equity



Policy
Laws, regulations, and
rules to improve
population health



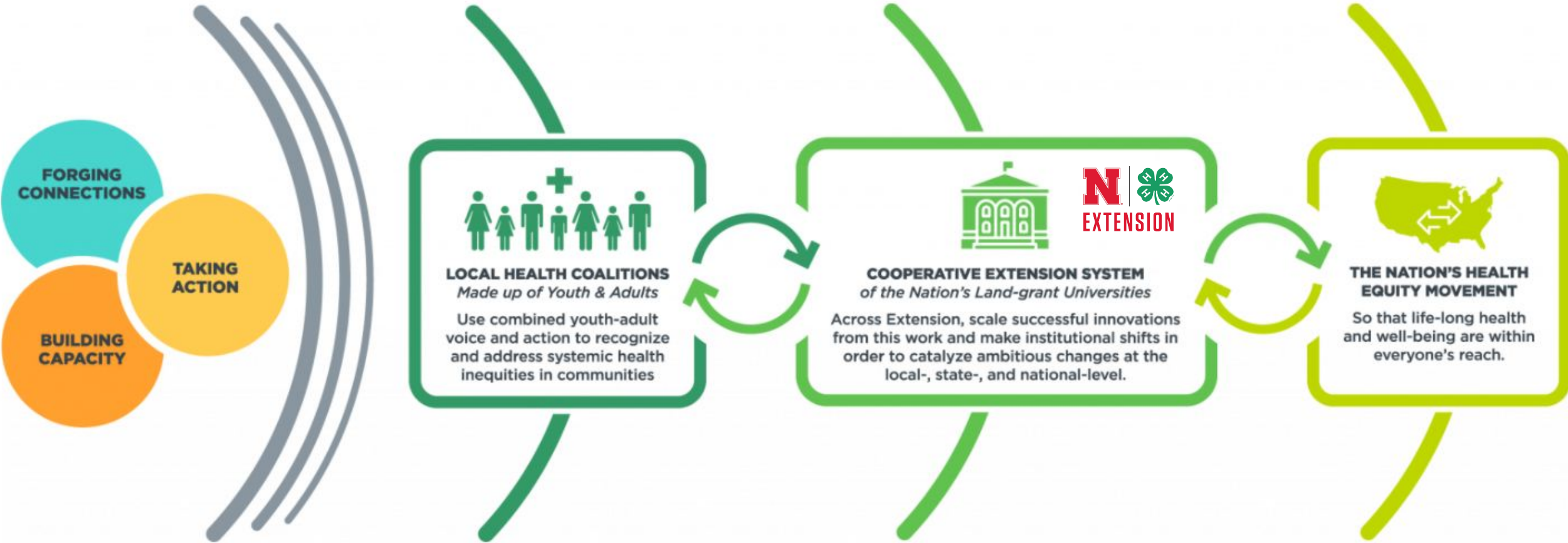
Infrastructure
Organizational structures and functions that support health equity



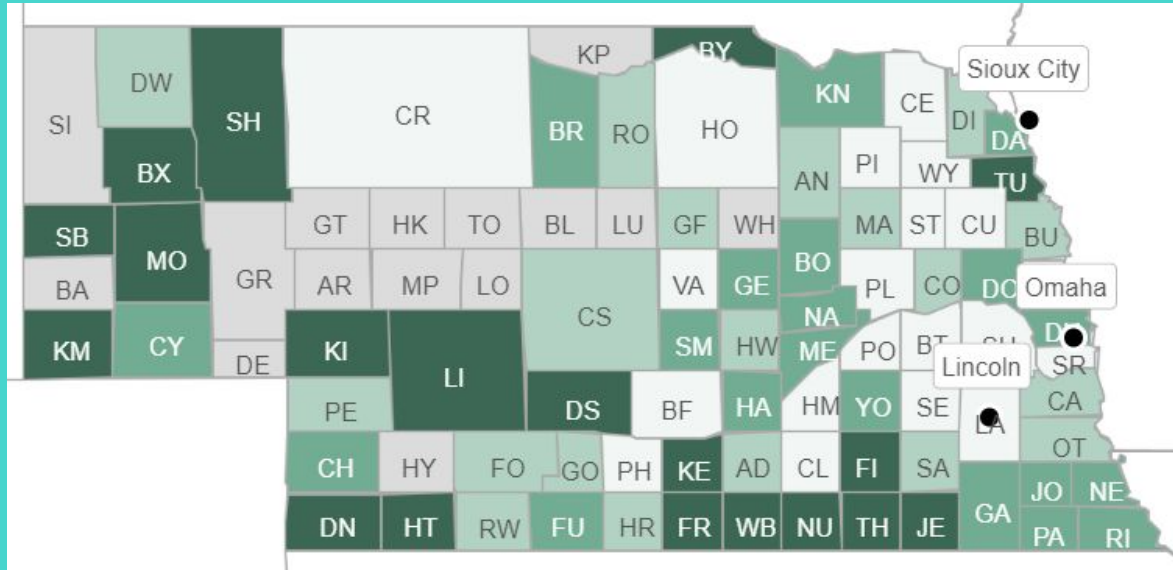
U.S. Department of
Health and Human Services
Centers for Disease
Control and Prevention

©2018

Well Connected Communities



Data



County Health Rankings & Roadmaps

Building a Culture of Health, County by County

Lancaster (LA)

	Lancaster (LA) County	Error Margin	Top U.S. Performers ⓘ	Nebraska	Rank (of 78) ⓘ
County Demographics +					
Health Outcomes					17
Length of Life					14
Premature death	5,100 ⓘ	4,800-5,400	5,200	5,900	
Quality of Life					33

Data

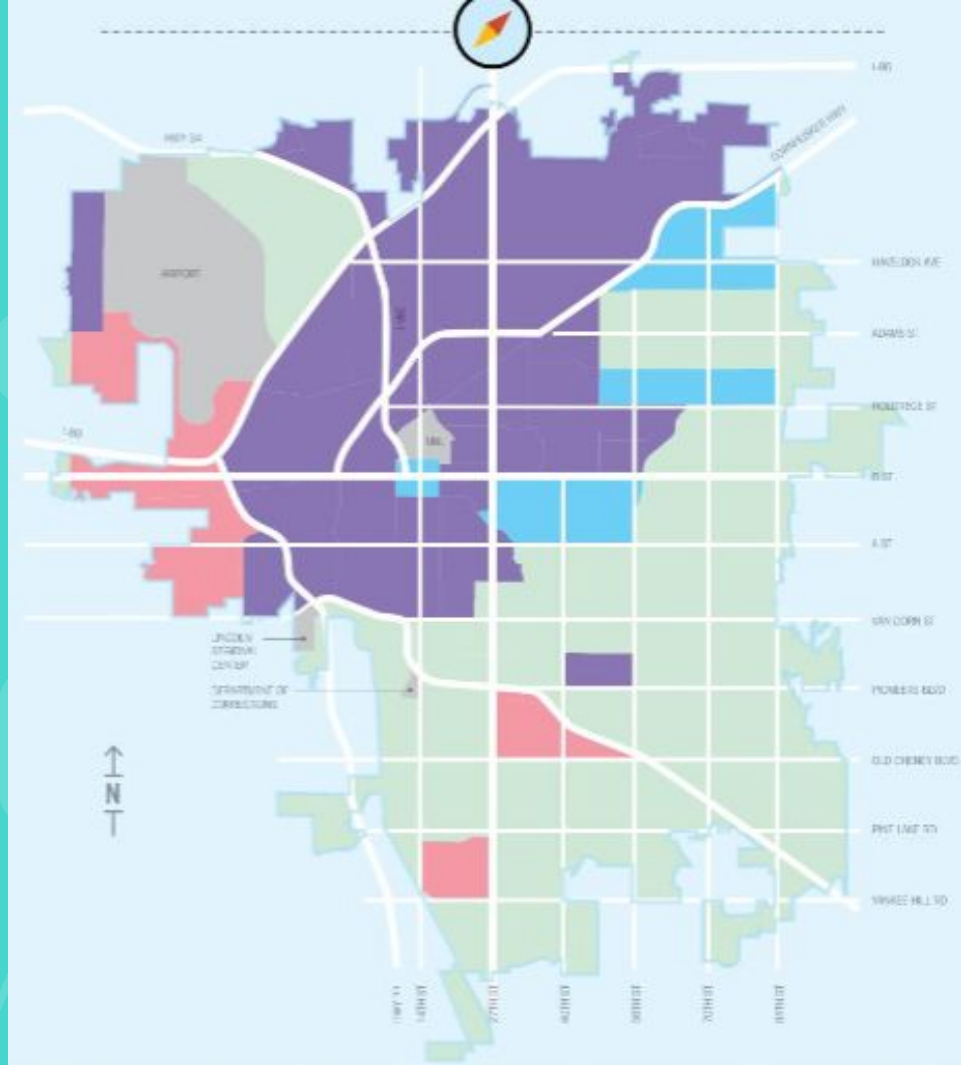


- Excluded
- City Limits

Data Source: Lancaster County Vital Records
Map: UCHD

Life Expectancy 2013-2017

Life expectancy is the statistically probable length of time an individual born today can be expected to live. In this map, life expectancy is based on mortality patterns of the population in a specific census tract given the risk factors in that location. While most people don't live their entire life in the same census tract, this map shows the geographic variance in life expectancy and the influence a person's address can have on health, especially during critical formative years. Life expectancy in Lancaster County improved slightly from 80.1 years in 2015 to 80.4 years in 2017, unlike life expectancy in the United States as a whole which has declined for the last three years.



- Poverty > Average
- Minority Population > Average
- Both Poverty and Minority Population > Average
- Excluded
- Current City Limits

Data Source: U.S. Census Bureau
Map: Lincoln-Lancaster County Health Department (LCHD)

* Poverty is defined as 100% of the federal poverty threshold as determined by the U.S. Census Bureau
** Includes all racial minorities and Hispanic population

Proposed (draft) Vision & Mission of Coalition

Vision: Lincoln, Nebraska is a community that provides health equity for all community members through cohesive action and intentionality.

Mission: To bring adults and youth from all walks of life together to eliminate the life expectancy gaps between various neighborhoods in Lincoln, NE by deeply understanding health disparities and taking intentional, collective action across all sectors of the community.

Proposed (draft) Vision & Mission of Coalition



deeply understanding health disparities

Action of Coalition: Journey through a process to sustained action



1. Deeply understand health disparities
 - a. Existing data
 - b. New data
2. Determine community strengths, opportunities, and needs
3. Take action

Community Based Participatory Research

Focus groups/interviews with people who live, work, learn, play, shop and worship in areas of greatest health disparities according to Place Matters maps.

Put your name in the chat if you'd like to be a part of the core team to dive into the 'deep understanding of health disparities'.

- join in meetings to recruit participants for focus groups/interviews
- help inform research process
- join discussions on aggregate analysis of data
- inform community-based action through the coalition

Group share:

What is one thing you heard about the intent behind building this Health Equity Coalition?

[Unmute & Speak or Type in Chat]



What impact do you foresee this coalition having on our community?

[Unmute & speak up or Type in the Chat]



What did you like about the idea of building this Health Equity Coalition?

What do you have questions/comment/concerns about?

Collaboration	everyone wins	Partnerships		How will this coalition build relationships with community members and residents instead of only share information and	How do we create policy change within this coalition?
COMMUNITY BASED action - give the power to the people				Concerned it will be "service oriented" and not "community oriented"	How will we center the community's voice?
Collaborative approach and Amplifying resources	Community Leaders help facilitate the direction	Improving the Community together		How does this differ from what Partnership w/ Healthy Lincoln does?	
	We can elevate the voices of community members and their experiences	Finding solutions that build off of our strengths			
19	We can make a difference, united	Action			



What are our next steps for building this coalition?

What are you willing to commit to?

- Coalition member?
- Coalition affiliate or sponsor?
- Core team of Community Based Participatory Research to guide this coalition in deeply understanding health disparities?

A network diagram with various sized nodes connected by lines, overlaid on a teal background. The nodes are represented by circles of different diameters, and the connections are thin white lines. The overall structure is a complex, interconnected web.

(Who are we missing?)

**Type names in the chat or send Emily an email:
emily.gratopp@unl.edu**



**How frequently should we
meet?
Next meeting date:**

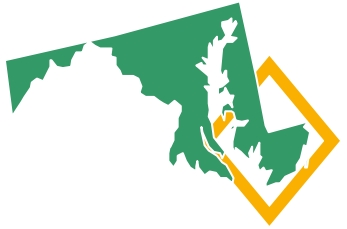


Thank You.

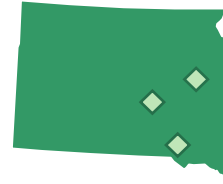
Well Connected Communities is a nationwide effort to cultivate wellness led by America's Cooperative Extension System, in partnership with National 4-H Council, with support from the Robert Wood Johnson Foundation.



Participating Land-Grant Universities



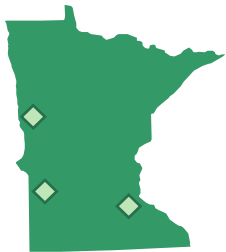
- ◆ Princess Anne-Eden
- ◆ Fruitland
- ◆ Pocomoke



- ◆ Lake Andes
- ◆ Lower Brule
- ◆ De Smet



- ◆ Coffee County (Tullahoma Community)
- ◆ Meigs County
- ◆ Pickett County



- ◆ Frogtown / Rondo Neighborhood
- ◆ Milan
- ◆ Moorhead



- ◆ Davis County (Clearfield Community)
- ◆ Duchesne/Uintah Counties (Ute Indian Tribe)
- ◆ Emery County



Participating Land-Grant Universities



- ◆ Seaford
- ◆ Wilmington
- ◆ Dover



- ◆ Colquitt County
- ◆ Calhoun County
- ◆ Washington County



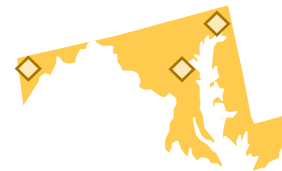
- ◆ Burley
- ◆ Caldwell
- ◆ Marsing



- ◆ Scott County
- ◆ Gibson County
- ◆ Fayette County



- ◆ Pendleton County
- ◆ Hart County
- ◆ Rowan County



- ◆ Garrett County
- ◆ Cecil County
- ◆ Baltimore City

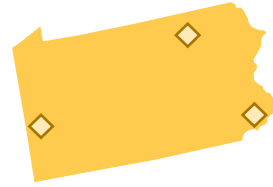


Participating Land-Grant Universities



UNIVERSITY OF
Nebraska
Lincoln

- ◆ Nemaha County
- ◆ Lincoln (North 27th Street Corridor)
- ◆ Thurston County



- ◆ Philadelphia County (Norris Square Community)
- ◆ Tioga County
- ◆ Beaver County