

Extending the University's Research-Based Resources to You

University of Nebraska Cooperative Extension accomplishes the University's land-grant mission by delivering reliable, research-based information that you can use every day. We develop and deliver educational programs which strengthen individuals, families, businesses and communities:

- Nutrition & Food Safety
- Pests & Wildlife
- 4-H & Youth Development
- Yard & Garden
- Farms & Acreages
- Home Environment
- Community & Leadership Development



ABOVE: Dr. Scott Josiah, state extension forester, explains his research on hazelnut cultivars to Extension Master Gardener volunteers.



LEFT: Pictured are 4-H staff presenting a paper recycling activity at earth wellness festival. Students learn it takes 250 gallons of water to make enough paper pulp for an average-sized Sunday newspaper.



RIGHT: Lancaster County Extension has a diagnostic lab to assist residents in identifying plants, plant diseases, insects and pests. Staff use this information to make control recommendations.

Rapid Response to Local Needs

Storm Recovery Resources

On May 22, 2004, severe storms — including tornadoes — damaged or destroyed many homes, businesses and farmsteads in Nebraska, including Lancaster County.

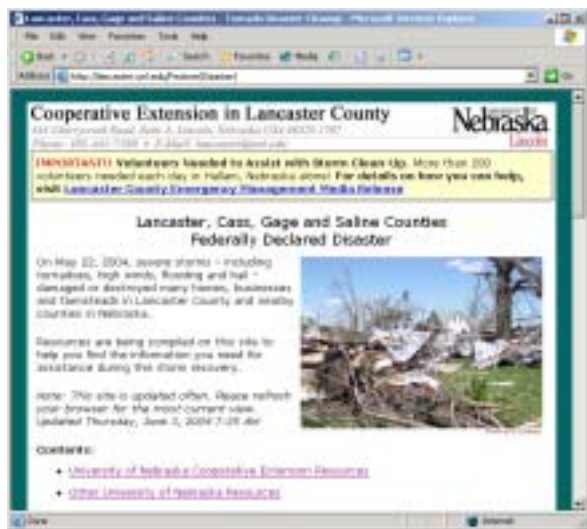
The next day, UNL Cooperative Extension in Lancaster County created a storm recovery section on its Web site, which continues to be updated with resources on:

- inspecting homes for structural damage
- evaluating damage to trees; pruning tips
- assessing hail, wind and flood damage to crops
- clean-up guidelines and tips
- weather safety information
- links to other University of Nebraska resources, local government Web sites, local agencies and national resources

These resources have received **17,920 hits**.

Extension staff and university specialists also sent relevant information to local media and responded to many storm-related inquiries from residents.

In June, extension joined the Nebraska Disaster Recovery Organization which was created to help people with unmet needs.



Itch Mite Epidemic Hits Lincoln

UNL Cooperative Extension in Lancaster County staff, health department officials and university specialists worked together to determine and solve this year's epidemic of mystery bites in Lincoln.

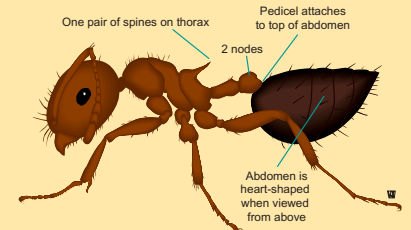
In early September, Lancaster County Extension began receiving phone calls about unusual itchy bug bites. Staff identified a pattern to these calls and contacted UNL's Entomology Department and the Lincoln-Lancaster County Health Department — who confirmed they were also receiving similar calls. Extension sent out a media release and collected information from callers. Within a couple weeks, university specialists identified the source of the bites as microscopic mites, *Pyemotes herfsi* — also called "itch mites" — which prey on the small fly maggots causing "leaf edge" galls on pin oak leaves. This mite species was new in the United States, previously known to exist only in Europe.



Sticky traps placed in Lincoln neighborhoods revealed the presence of microscopic "itch mites."

New in 2004

Ant Identification Resources



Lancaster County Extension staff developed the following ant identification resources of the most common household ant pests in Nebraska:

- Detailed color illustrations
- Actual size
- Description of workers
- Habits
- Control methods

These resources have received more than **56,778 hits** since being posted on the Web site at lancaster.unl.edu/enviro/ants in January. *Identification of Structure-Invasive Ants in Nebraska* was recently published as an Extension Circular (EC04-1570).

Handwashing Bean Bag Toss Game



(L-R) Joyce Jensen, LLCHD, and Alice Henneman, Extension Educator

Lancaster County Extension and the Lincoln-Lancaster County Health Department (LLCHD) developed a bean bag toss game, "Sink Those Germs," to promote handwashing to youth. This educational game can be used in schools, child care centers, homes and events such as health fairs.

Game materials — including a poster and coloring sheets — are free online at lancaster.unl.edu/food/sinkgerms.htm and have been downloaded more than **5,000 times**.

NEP Lessons at Camp Abbott, Clinton CLC



Nutrition Education Program staff present a healthy snack experience at Clinton Community Learning Center.

The Lancaster County Nutrition Education Program (NEP) created two new partnerships to present nutrition lessons at after-school and summer programs: Clinton Community Learning Center (CLC) and

continued on page 3