

Can You Guess It?

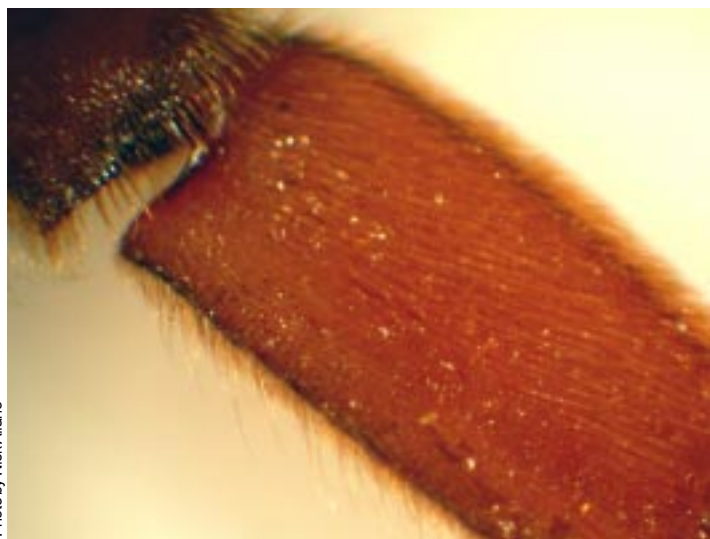


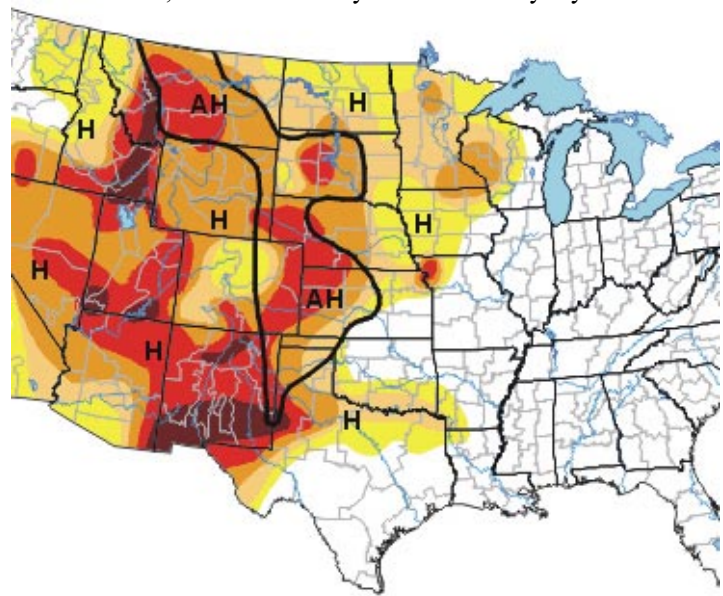
Photo by Nick Aliano

Did you guess it? Find out at lancaster.unl.edu

Did you guess it from the February NEBLINE? The answer was the feathers of a 3-week old chicken.

Latest U.S. Drought Monitor Map

As of Feb. 10, Lancaster County is in abnormally dry conditions.



Drought Intensity:
 D0 Abnormally Dry
 D1 Drought - Moderate
 D2 Drought - Severe
 D3 Drought - Extreme
 D4 Drought - Exceptional

Drought Impact Types:
 AH Agricultural crops, pastures, grasslands
 H Hydrological (water)
 HI Human health impacts

For the most recent map, visit www.drought.unl.edu/dm

Source: National Drought Mitigation Center, University of Nebraska

ALL-AMERICAN SELECTIONS

continued from page 1



Petunia 'Limbo Violet'

plant. The habit is restricted. 'Limbo Violet' plants become mounds which, at times, are completely covered with blossoms. The ultimate plant size is only 6 to 7 inches tall, spreading 10 to 12 inches. 'Limbo Violet' is designed for small space gardens such as urban residences or formal gardens requiring neat, tidy plants. At 3 inches or larger, 'Limbo Violet' blooms are huge but recover quickly from severe weather. Plants are virtually maintenance-free, no pinching needed.



Melon 'Amy'

Melon F1 'Amy'

Vegetable Award Winner

There is a trend for gardeners to grow the most flavorful, exotic vegetables from around the world. 'Amy' is one of these new improved vegetables and an

AAS Winner. 'Amy' exhibits improved qualities such as earliness and higher yields. 'Amy' melons are eye-catching. They are bright golden yellow with smooth skin; without netting or sutures. The radiant color indicates when the melon is ready for harvest. Cutting open the mature melon will release the distinctive melon aroma. There is a small seed cavity surrounded by moist, white flesh noted for its sweet flavor and firm texture. 'Amy' plants will produce melons in 70 to 80 days from transplanting. The vigorous spreading vines need 6 feet of garden space or they can be trained up a trellis.



Winter Squash 'Sunshine'

Squash, Winter F1 'Sunshine'

Vegetable Award Winner

Consumer media have recently given coverage to winter squash because of its flavor, high vitamin content and ability to be stored. 'Sunshine' is a new squash that outshined other varieties in side-by-side trials across North America. The vibrant orange-red skin is distinctive, similar to sunshine, hence the name. The 3 to 4 pound fruit is a flattened globe shape. The bright orange flesh is sweet, nutty, creamy smooth and com-

pletely stringless when baked, steamed or microwaved. 'Sunshine' plants are adaptable to any growing location as long as the growing season is 80 to 95 days. Expect mature squash in about 95 to 100 days from sowing seed or 80 days from transplants. Harvest ripe fruit in the fall prior to or protect from frost. The short vines need 6 to 8 feet in the full-sun garden.

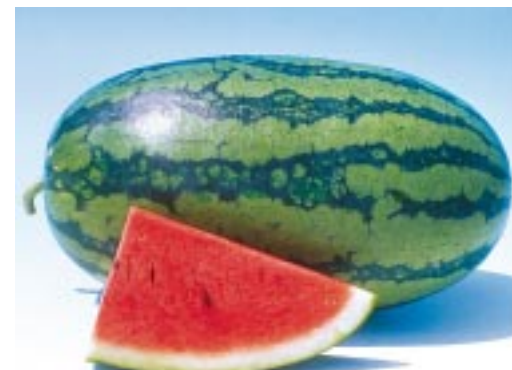
Watermelon F1 'Sweet Beauty'

Vegetable Award Winner

Nothing says summer like watermelon and everybody

wants a sweet slice. 'Sweet Beauty' offers consistently sweet flavor and crisp texture. It was praised by AAS Judges for its superior eating qualities. 'Sweet Beauty' melons are 5 to 7 pounds, an oblong shape with dark green skin and medium green stripes.

Described as an "ice box" type, it means 'Sweet Beauty' is a single-serving size. Improved for earliness, 'Sweet Beauty' melons can be harvested in about 77 to 80 days from sowing seed directly into the garden. The vigorous plant spreads vines about 8 to 10 feet.



Watermelon 'Sweet Beauty'

4-H Camps Are Bigger and Better

4-H summer camps have expanded in 2004 with more camps and many new activities! Many camps have been extended or doubled in length!

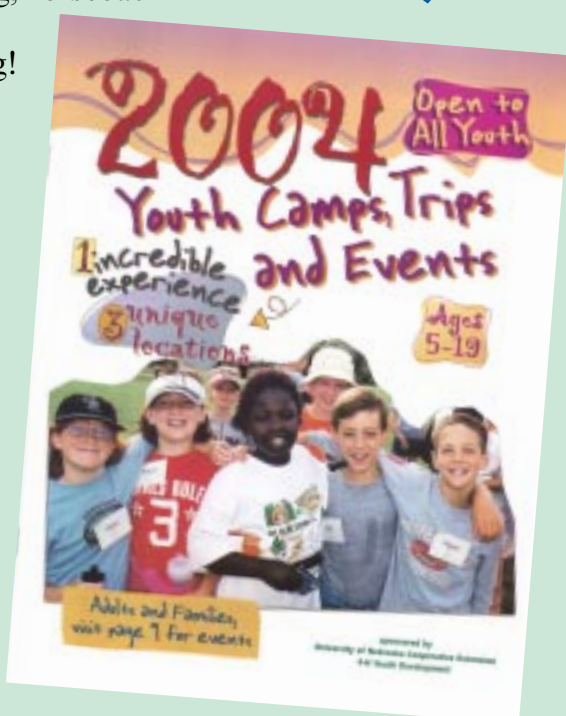
Camps are a great opportunity to meet new friends and experience a wide variety of exciting activities such as canoeing, mountain biking, horseback riding, rappelling or climbing, volleyball, basketball, art, dancing, backpacking, shooting sports, water skiing and fishing!

There are more than 40 day and overnight camping programs and trips scheduled in May, June, July and August at the three 4-H camp locations in Nebraska:

- Eastern Nebraska 4-H Center, Gretna
- Nebraska State 4-H Camp, Halsey
- South Central 4-H Center, Alma

Brochures with camp descriptions, registration forms and more information are available at the extension office or online at 4h.unl.edu/camp/youth.

Open to all youth ages 5-19



Save 10% by registering before March 15!

Early bird registration deadline is March 15 — save 10% on camp fees! In some cases, save over \$25 per person!

Financial FUNDamentals

4-H Camp Mar. 5-6

Designed for youth ages 13-19 and their mom, dad or a mentor — this new camp will let you explore your money personality profile, set college cost goals, learn the FUNDamentals of checking, credit, savings, investing, and spending! The camp will be Friday, March 5 & Saturday, March 6 at the Eastern Nebraska 4-H Center near Gretna. Cost is \$60 per person. For more information or to register call (402) 332-4496.

Family Day & Open House at Gretna May 2

There will be a FREE Family Day and Open House at the Eastern Nebraska 4-H Center near Gretna on May 2. Bring your whole family to camp for an afternoon of exploring the facilities and participating in some of the activities that will be offered this summer. There will also be a bird presentation and birdhouse building. For information or to RSVP, call (402) 332-4496.