

## 2003 Clover College Hands-Full of Fun and Learning

4-H Clover College is a four-day series of “hands-on” workshops presented annually by UNL Cooperative Extension in Lancaster County. It is open to all youth ages 5 and up. This year’s Clover College, June 24–27, featured 27 workshops and had more than 300 registrations. A special thanks to the instructors and assistants who helped make Clover College a success!



Older youth assist a Clover Kids Camp participant in making clay.



Participants in Bird Seed Feeder use carpentry tools to construct three different bird seed feeders.



Jean Wheelock from the Pioneers Park Nature Center teaches youth about owls.



A youth counts down to the launch of her rocket which she triggers with a button.

Employees from TierOne Bank, Clocktower Branch teach youth how to balance a checkbook.



Gary Tharnish from Burton Tyrrell's Flowers demonstrates how to put the finishing touches on a floral arrangement.

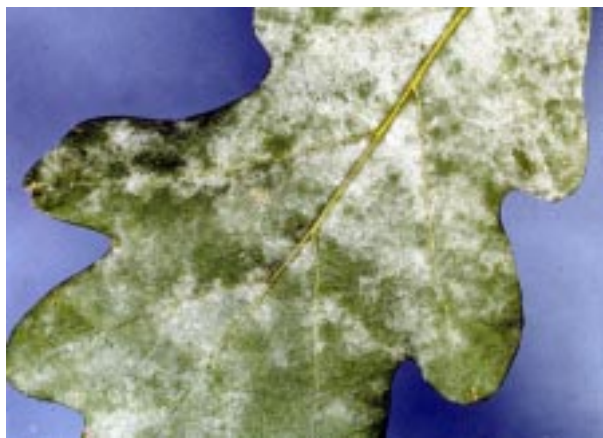


Camp counselors from the Eastern Nebraska 4-H Center in Gretna lead youth in camp songs and activities.



Extension Educator Barb Ogg shows participants how to collect insects for their own starter insect collections.

See Inside for More Information: Powdery Mildew



Damage from powdery mildew on oak leaf. For information about powdery mildew on ornamentals, see page 2 of this issue.

Clemson University - USDA Cooperative Extension Slide Series, www.forestimages.com

## Opossum Caught Dead in the Act

Short Story and photos shared by Kate Brooke. Kate is a printmaker and mixed media artist who exhibits her work regionally and nationally. She owns and operates the Opossum Track Press in Lincoln, Nebraska.



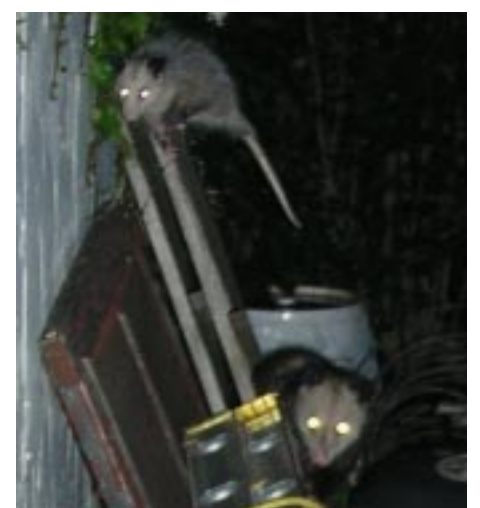
Photos © Kate Brooke

Last night Robert and I found a “dead” young opossum on our driveway, with my cat Cartwheel, who is too lazy to hunt anymore, strutting around triumphantly.

Cartwheel almost always meets us on the driveway when we return home, and I suspect when he got there last night, he ran into the opossum. I bet the two creatures surprised and scared one another, and when the opossum dropped into defense mode, Cartwheel decided he was One Tough Cat.

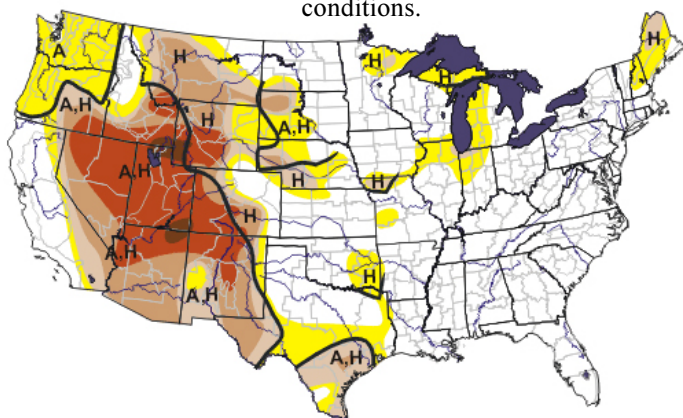
We quickly put Cartwheel inside and I got my camera. I didn't see any evidence that the young opossum was harmed, and when I checked on it later, of course it had moved on. Turns out its mother was nearby. The young opossum's rather grisly death posture was mightily impressive!

For more information about opossums, see page 3 of this issue.



## Latest U.S. Drought Monitor Map

As of July 1, Lancaster County was not classified in drought conditions.



**Drought Impact Types:**  
 An Agricultural Census, pasture, grasslands)  
 See Hydrological (water)  
 Delineates dominant reports (No type = both impacts)

For the most recent map, visit [www.drought.unl.edu/dm](http://www.drought.unl.edu/dm)

Source: National Drought Mitigation Center, University of Nebraska