



# Reduce Reuse - Recycle

# A Directory to Recycling

This special insert to the *NEBLINE* was prepared by the University of Nebraska/Lancaster County Cooperative Extension, Lincoln-Lancaster County Health Department and City Recycling Office to commemorate the 30th Anniversary of Earth Day.

## Celebrate Earth Day April 22, 2000!

Arlene Hanna,  
*Extension Associate*

Who wants to breathe dirty air or swim in a polluted lake? I don't and I'm sure you don't either. When former Wisconsin Senator Gaylord Nelson noticed our country's air, water, and soil were being polluted; plants and animals were dying, people around the United States were upset. They wanted to change things, but our country's leaders weren't listening. They were not making laws to protect the environment.

Finally, in June 1969, Senator Nelson thought of an idea to get the attention of the politicians. The idea was to have a nation-wide demonstration. If enough people got involved, everyone, from the president to each city's mayor, would have to take notice.

It worked! On April 22, 1970, Earth Day was held, one of the most remarkable happenings in the history of democracy. Twenty million people showed they cared and politicians finally started to listen.

Nearly every town and school in the nation had special

activities. Scientists, doctors, store clerks, police officers, factory workers, teachers, students, and others took time off to show their concern for the Earth. They marched, went to concerts, took nature walks, and studied about pollution. In New York City, the mayor stopped people from driving cars on Fifth Avenue. People began to litter less. Employees traveled to work together in cars and buses. Congress made stronger laws and established a new department called the Environmental Protection Agency (EPA). The EPA's job was to keep businesses, cities, and states from polluting our country's environment.

Soon the skies, the water and the land began to look cleaner. BUT...ten years passed and Americans started to forget the lessons of Earth Day. They grew careless and began to waste water, fuel, soil, and trees. The United States was not the only one polluting. All over the planet, poisons were quietly filling the air, water and land.

Businesses and governments weren't getting rid of waste safely. They dumped garbage and waste more than ever. They

filled the air with smog and the water with poisons. Store owners changed swamps and prairies into shopping malls. Trees were burned and wetlands destroyed to make farms. Oil spills kept happening. Rain forests, ice fields, deserts, swamps, forests, and prairies were being spoiled or destroyed.

Garbage was piling up. People bought things once, then threw them away; baby diapers, aluminum cans, plastic toys, fast-food packages. Trucks carried the garbage to enormous holes in the ground called dumps. There the trash sat. Millions of acres of land was filled to the brim with garbage. The world's oceans had thousands of tons of trash floating in them. Creatures were getting sick — some were dying from the poisons in the air and water. Pollution was killing the planet and people were scared. Something had to be done.

Dennis Hayes, a lawyer and an important worker in the first organized Earth Day in the 70's, decided to work on Earth Day 1990. He organized people and they came up with plans that reached far beyond the United States. On April 22, 1990, 200

million people, in more than 140 countries, celebrated the second Earth Day. Children around the world formed cleanup teams to pick up litter in the country and cities.

In Nicaragua, people planted 10,000 fruit trees. Japan held a Garbage Festival. People learned how garbage was recycled into everything from postcards to soap. In Jordan, the government planted a tree for every new baby born in the country. A team of mountain climbers from the U.S., Russia, and China climbed Mount Everest to pick up the trash others had left behind.

After Earth Day 1990, world groups continued to share ideas they wanted every country to do. They included: cutting down on garbage, saving forests and animals, cleaning up water and air, farming with fewer chemicals, planting more trees, and using land wisely.

Now, governments are making laws to protect the environment but everyone must do their part. Every action we take will help save the Earth.



This year is the 30<sup>th</sup> Celebration of Earth Day and each of us should be doing our part to save the planet.

Why not make every day Earth Day. We can by reusing things, cutting down on making garbage and recycling, saving and planting trees, composting. Also saving energy, buying toys that last, learning about nature, saving the rain forests, walking, riding bikes, taking the bus or carpooling. Sending letters to the mayor and city council members, to county, state and national officials requesting them to support legislation that protects/preserves the environment, and most importantly, respect our planet and our environment.

## Special Waste Program for Businesses

The mission of the Lincoln-Lancaster County Health Department (LLCHD) is to protect and promote the health of the citizens and the environment of Lincoln and Lancaster County. The Special Waste Program ensures proper management of wastes that may pose a hazard to health and the environment.

### What is special waste?

A waste generated by industries, commercial businesses or home occupations which:

- ✓ Has the potential to create a negative effect on the public health or the environment.
- ✓ Because of its characteristics, it requires special handling at the landfill.
- ✓ Requires regulation by the Nebraska Department of Environmental Quality, US EPA, OSHA and DOT.

Currently there are 35 types of waste Lincoln-Lancaster County Health Department (LLCHD) permit and regulate. Eighteen of the 35 are required to have permits regardless of the quantity of waste they generate.

### How does a business find out if they have a special waste?

✓ Call TAP (Technical Assistance Program) at LLCHD. TAP is a non-regulatory approach that provides free consultation to help business to understand the processes in their business and how to manage the waste they produce. A technical assistance engineer can give you no nonsense, practical advice and action-oriented solutions for disposal of waste and assistance with regulatory requirements. Call Ron Eriksen at 441-6238 or Beth Mann at 441-6235 for TAP.

✓ Businesses of Lincoln-Lancaster County are required to fill out a special waste inventory. This special waste inventory determines if your business generates special waste and if a permit will be required for disposal.

If your business has not completed a special waste inventory, contact Ron Eriksen or Beth Mann for assistance with the special waste inventory process.

### Banned Wastes: The following wastes are banned from Lincoln Landfills.

1. Hazardous wastes
2. Special wastes without prior approval
3. Bulk liquids
4. Waste oil and lead acid batteries
5. Tires
6. Out-of-county waste

### Examples of potential hazardous or special wastes:

- ✓ Sludge and sediment from tanks
- ✓ Waste contained in drums or buckets
- ✓ Waste marked with placards, warnings or danger labels
- ✓ Solvents, thinners or paints
- ✓ Petroleum contaminated wastes
- ✓ Asbestos containing wastes
- ✓ Fluorescent light tubes, mercury containing waste
- ✓ PCB wastes, light ballasts, dielectric fluids
- ✓ Infectious wastes including treated Radioactive wastes
- ✓ Flammable, explosive or corrosive wastes
- ✓ Pesticides and herbicides
- ✓ Treated railroad ties, power poles and lumber
- ✓ Industrial/process dusts, airborne wastes

### Banned waste recycling options and disposal alternatives:

Businesses in Lincoln-Lancaster County can recycle several of the banned wastes. For information on where to recycle banned waste or alternative disposal options, call Ron Eriksen or Beth Mann.

# Reduce

Each year Lincoln and Lancaster County residents dispose of 285,000 tons of waste. This represents an average of 787 tons of waste per day that is buried in the sanitary landfill. An average of 6.5 pounds per person per day is generated by people in Lancaster County.

Reducing the amount of waste disposed of can save landfill space and save you money.

One-third of the trash from households is product packaging. Product packaging has its purpose, such as making products safer and supplying information. However, many items are simply over-packaged. Decisions you make while shopping can save you money and reduce the amount of trash that goes into the landfill.

When making purchases, a savvy consumer considers cost, quality and convenience of the product. But, did you know that more than \$1.00 of every \$10.00 spent on food goes toward packaging?

By considering the amount of waste produced by product packaging, the consumer can save money. By adding the following suggestions to your shopping routine, you can be a more efficient consumer.

- ✓ **Buy large or economy-sized items.** Large-quality items usually have less packaging per unit, lowering your costs.
- ✓ **Avoid over-packaged products.** Reject excessively packaged products.
- ✓ **Buy recyclable products.** Buy products that are made from post consumer waste. These products may not be marked but are made of mostly recycled material: steel, food cans, cars, appliances, furniture, nails, aluminum, glass bottles and jars, molded pulp containers—including brown and gray egg cartons and flour boxes. When buying plastic, attempt to limit to #1 and #2, as much as possible, these types can be recycled in Lincoln and Lancaster County while the higher numbered plastics can not.
- ✓ **Buy reusable products.** Refillable water containers and shopping bags are two examples of reusable products.
- ✓ **Know when not to buy.** Rent products you only need temporarily. Sometimes a borrowed or used item is available and would better fit your needs rather than buying a new product.

## Express your opinion.

Contact manufacturers about packaging. If you believe that packaging is too much, write the manufacturer. Go a step further and compliment manufacturers who use minimum amount of packaging needed. Also ask store and work managers to stock products you prefer.

Some helpful home and office tips to help you reduce waste. Share these with neighbors and friends:

- ✓ Reuse old clothing for rags.
- ✓ Minimize the use of disposable items, such as: eating utensils, pens, lighters, cameras, razors and paper towels.
- ✓ Donate clothes, furniture and appliances to thrift stores.
- ✓ Use shaving soap instead of aerosol can.
- ✓ Use cloth napkins and hand towels.
- ✓ Reuse empty plastic containers for travel items, nails, bolts, etc.
- ✓ Compost and mulch grass clippings and leaves.
- ✓ Use a mug instead of styrofoam/paper cups. Ask your office or church to do the same.
- ✓ Request that your name be removed from mailing lists by writing:  
 Mail Preference Service  
 Direct Marketing Associates  
 PO Box 3861  
 New York, NY 10163-3861
- ✓ Reuse old file folders and use two-sided copies.
- ✓ Pass along used magazines to a friend, school, nursing home, etc. Consider sharing a subscription with someone.



## What can be reduced?



# Reuse

An important aspect in waste reduction is the reuse of material. When shopping, it is economically and environmentally correct to consider the reuse value of the items you purchase. Refillable items are always a good choice. If you are seeking to reuse food containers such as honey, molasses, olive oil, herbs, vitamin extracts, lotions, etc., go to:

**Open Harvest Natural Foods Grocery**  
 1618 South Street  
 475-9069

**Thrift Shop**

**GARAGE Sale!**

## Reuse of household items

Garage sales are a great economical way to get rid of and obtain good useable items that would otherwise be put in the trash. Items such as clothing, shoes, appliances, furniture, books, dishes, etc. can easily be collected and donated to a variety of thrift stores or to the Lincoln City Mission, a few will even pick up the donation at your residence. Call for more information.

### Amvets Pick Up Service

476-8387  
 1745 "O" Street  
 Monday-Friday 9 a.m.-6:30 p.m.  
 Saturday 9 a.m.-5:30 p.m.  
 \*Will not pick up couches or king size beds

### The Salvation Army Truck Pick Up Service

474-4747  
 737 "P" Street  
 Monday-Saturday 8 a.m.-8 p.m.  
 (Check listings for other locations)

### Family Thrift Center

476-2857  
 1745 "O" Street  
 Monday-Friday 9 a.m.-6:30 p.m.,  
 Saturday 9 a.m.-5:30 p.m.

### Junior League Thrift Shop

421-6099  
 5631 South 56th St., Suite 2  
 Monday, Wednesday, Friday 10:00 a.m.-6:00 p.m.  
 Tuesday, Thursday 10:00 a.m.-8:00 p.m.  
 Saturday 10:00 a.m.-5:00 p.m.  
 \*Only accept clothing donations

### Mission Distribution Center

475-6888  
 1822 "N" Street  
 Monday-Saturday 8:30 a.m.-4:30 p.m.

### Disabled American Veterans

325-8778  
 3830 North 27 Street  
 Monday-Saturday 9 a.m.-7 p.m.  
 (Check listings for other locations)

### Goodwill Industries

438-2022  
 2100 Judson  
 Monday-Friday 8 a.m.-4:30 p.m.  
 (Check listings for other locations)

### Mission Thrift Mart

434-5390  
 1825 "O" Street  
 Monday-Saturday, 9 a.m.-4 p.m.





# Recycle

There are 24 recycling drop-off sites in the county. A full list and map of all sites can be found in the blue pages of the telephone directory. For more information, call: Lincoln Recycling Hotline at 441-8215.

Lincoln's 14 multi-material recycling drop off sites will accept:

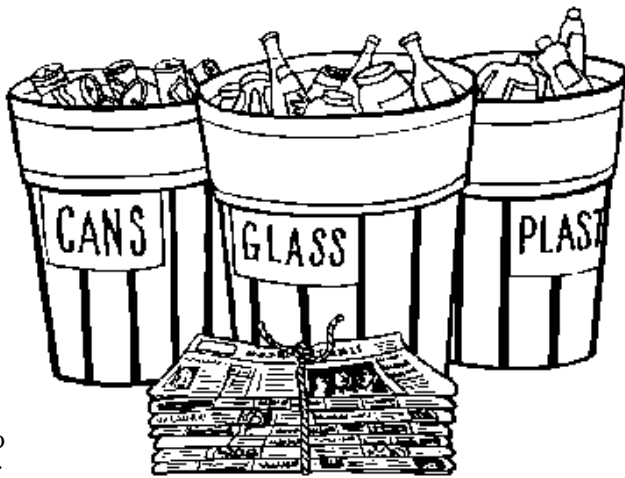
- ✓ Aluminum cans (not foil)
- ✓ Cardboard
- ✓ Glass (clear, green, brown)
- ✓ Magazines
- ✓ Mixed paper (office, computer, junk mail, phone books, stick-it notes)
- ✓ Newspaper
- ✓ Plastic (#1 bottles, #2 bottles, milk jugs-NO tubs ie. margarine or yogurt)
- ✓ Tin cans (including aerosol cans that are empty, plastic lid removed—leave wick and spray nozzle in place)

Please take time to separate your recyclables correctly. To prepare aluminum cans flatten; tin cans remove any labels, rinse out residue and smash. To prepare glass and plastic remove any caps, rings and rinse. Flatten the plastic but do not break glass. To prepare paper products separate into piles of newspaper, magazines, mixed paper and cardboard.

It is against the law to deposit any material other than what is accepted. Take down licence number of vehicle and call the police at 441-6000 if you see people depositing materials illegally.

Additional communities with recycling sites in Lancaster County:

- ✓ Bennet, Refuse Transfer Station,
- ✓ Davey, Refuse Transfer Station
- ✓ Hickman, City Park
- ✓ Panama, Refuse Transfer Station
- ✓ Waverly, Waverly Plaza



Private curbside recycling: (A monthly fee is charged for this service.)

**Recycling Enterprises**

421-6655

Will take: aluminum cans, cardboard, glass, magazines, newspapers, mixed paper, phone books, plastic bottles (#1), tin cans.

**Shraders Refuse**

438-4777

Will take: aluminum cans, glass, newspaper, plastic (#1), tin cans.

Refuse haulers who recycle in their customers area:

**Kurtzer Bros.**

423-6191

**Scaff Refuse Service**

423-5705

**Rogenkamp Refuse Service**

797-3045

cardboard only

**Webber and Sons**

423-8284

**Commercial recycling**

Businesses interested in waste reduction and recycling can call WasteCap of Lincoln at 472-0888. WasteCap is operated by Lincoln Chamber of Commerce and partially funded by City of Lincoln. WasteCap's goals are to promote waste reduction by providing businesses with technical assistance necessary to reorganize.

There are a number of commercial recycling providers in the city who are able to assist local businesses in the removal of recyclable materials. They are:

**Recycling Enterprises**

421-6655

**Midland Recycling**

476-8502

**Roberts Recycling**

483-2477

**Midwest Refuge**

475-0244

**Industrial Services**

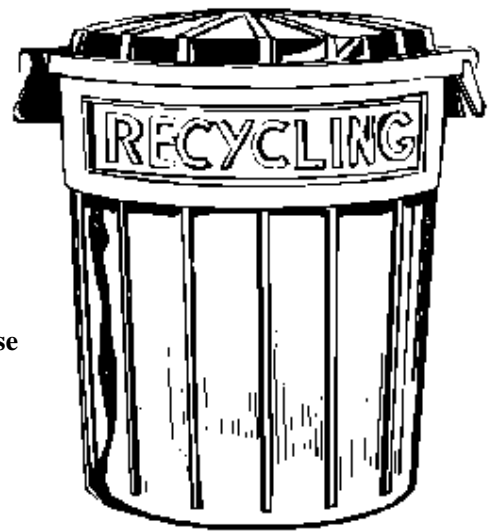
467-3581

**Von Busch & Sons Refuse**

475-5197

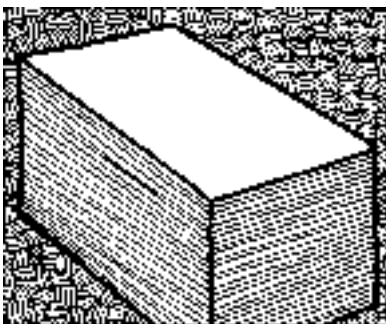
**Gomez Refuse**

467-1669

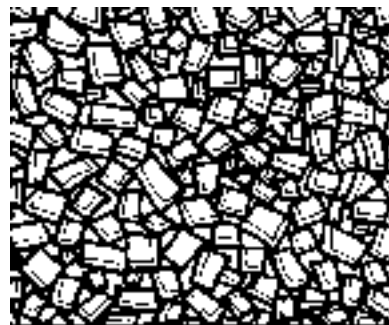


# Recycle It!

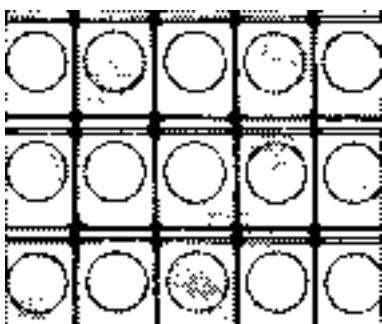
## Examples of Recycling



**Recycling** is turning used paper back into pulp and then making new paper from that pulp. The *Lincoln Journal Star* is made out of 25-40% recycled newsprint.



**Recycling** is crushing used glass bottles into small pieces and melting them down to make new glass. Each new food and beverage container made out of glass has 30% recycled glass in it.



**Recycling** is melting aluminum cans, pressing the molten metal into sheets as it cools and shaping these sheets into new cans. Each new aluminum can has 54% recycled aluminum in it.



**Recycling** is chopping up grass cuttings and producing compost. Lincoln receives 14,000 tons of grass and leaves each year to produce compost.

# Lincoln's Sanitary Landfill

The city operates two landfill sites: the 48 Street Small Vehicle Transfer Station, north of 48 and Superior; and the Bluff Road Sanitary Landfill, located at Highway 77 and Bluff Road.

All vehicles using these sites must have their load covered. A disposal fee is charged.

The Bluff Road Sanitary Landfill is used by commercial refuse haulers or customers hauling materials in large trucks and trailers with cargo box dimensions larger than 6 feet by 8 feet by 5 feet high. The Bluff Road Yard Waste Composting facility is located at the Bluff Road Landfill site. It is designed for use by commercial refuse haulers and commercial lawn maintenance companies hauling yard wastes. The Bluffs Road Sanitary Landfill is not open to the public.

The 48 Street Transfer Station is used by cars, pickups, trailers or other small vehicles that have cargo dimensions of 6 feet by 8 feet by 5 feet high or smaller. Grass, leaves, brush, appliances, metals, waste oil, lead acid batteries and tires (less than 10 per load) must be sorted out and placed in designated areas of the site for recycling. Appliances, waste oil, lead acid batteries and tires can usually be recycled at a private dealer for a smaller fee. Please contact the Recycling Hotline at 441-8215 for more details.

**Lincoln Landfills:**

(402) 441-7738

**48 Street Transfer Station**

5101 North 48 Street  
441-8104

Hours: Monday-Saturday, 6:45 a.m.-3 p.m.  
Sunday, 6:45 a.m.-12 p.m.

**Bluffs Road Sanitary Landfill**

6001 Bluff Road  
441-8102

Hours: Monday-Friday, 6:45 a.m.-4:15 p.m.  
Saturday, 6:45 a.m.-1 p.m.  
Sunday, 9 a.m.-12:30 p.m.

Closed: Thanksgiving, Christmas, New Years Eve and possibly if high winds above 30 mph.

Fees: Cars—\$2.50  
Vehicle w/trailer—\$16.00  
Pickups/vans—\$10.00  
Large vehicles—\$16.00/ton

The following are NOT allowed at disposal sites:

- ✓ Flammable, toxic, reactive or other hazardous wastes.
- ✓ "Special wastes" from businesses without a permit from Lincoln-Lancaster County Health Department. (call 441-6238)
- ✓ Liquid wastes.
- ✓ Wastes with a dimension exceeding six feet in any direction
- ✓ Loads of ten or more tires

**Special Fees:**

- ✓ Appliances \$5.00 each
- ✓ Car and light truck tires \$3.00 each
- ✓ Heavy equipment tires \$11.50 each
- ✓ Large truck tires \$6.50 each
- ✓ Special waste \$5.00 each with permit
- ✓ Unacceptable waste loads/illegal dumping \$50.00 per incident
- ✓ Uncovered load fee \$3.00

**Illegal Dumping**

Report any person dumping waste at recycling sites, city parks, county roads or on private property to sheriff or police departments.

## Facts

### Rates of Decomposition for Various Forms of Litter

<b>Paper</b>	2-5 months
<b>Orange Peels</b>	6 months
<b>Milk Cartons</b>	5 years
<b>Filter Tip Cigarettes</b>	10-12 years
<b>Plastic Bags</b>	10-20 years
<b>Leather Shoes</b>	25-40 years
<b>Plastic Containers</b>	50-80 years
<b>Disposable Diapers</b>	75 years
<b>Tin Cans</b>	100 years
<b>Aluminum Cans</b>	200-500 years
<b>Styrofoam</b>	NEVER

**Call the Recycling Hotline at 441-8215!**

# Refuse Collection Service



Lincoln has 37 independent waste haulers. To find a hauler that serves your area, look in the yellow pages under "Garbage Collection," talk with a neighbor or contact the Lincoln Solid Waste Management Association at 475-8361.

Residents may set out household trash in canned or bagged refuse at the curbside or in the alley. The refuse must be generated at the residence. For example, one can not bring trash home from the work site.

Please have the refuse set out by 6 a.m. on the scheduled collection day. The landfill is closed on Thanksgiving, Christmas and New Years Day, therefore there is no waste collection on these days.

**Reminders:**

- ✓ Garbage cans must have tight-fitting lids, be water and rust proof and have handles.
- ✓ Garbage cans should not be larger than a 32 gallon container.
- ✓ Plastic bags may be used for regular trash, but must be placed inside garbage cans.
- ✓ Yard waste such as grass and leaves may not be placed in plastic bags (see Yard Waste)
- ✓ Burning refuse is in violation of Lincoln City Ordinances.



These items are banned from the landfill and can NOT be placed in garbage cans:

- ✓ vehicle batteries
- ✓ used oil
- ✓ liquid paint
- ✓ pesticides/herbicides
- ✓ fluorescent light bulbs
- ✓ vehicle tires
- ✓ ammunition and explosives—call Bureau of Fire Prevention Department at 441-7791
- ✓ other hazardous, toxic, reactive or corrosive wastes



# Disposing of Special Waste

Residents are often asked to dispose of special waste such as bulk items like appliances, construction demolition and tires. Other special waste items banned from the Landfill include automotive oil, antifreeze, propane, gas cylinders and fire extinguishers. Each item has a preferred option of disposal. Additional information is available from the Lincoln Recycling Hotline at 441-8215.

## 1. Appliances –

There are several private companies that will pay for appliances or accept appliances free of charge. Private dealers are often the most economic option for disposing of an appliance. Residents may dispose of appliances on the curbside but should first contact the waste hauler. Because the hauler will be assessed a fee for disposal at the landfill, residents should expect the fee to be passed on to them. Residents may haul appliances to the 48 Street Transfer Station, there is a \$5.00 charge per appliance in addition to the gate fee for the vehicle.

Private companies accepting appliances are listed below. Please call dealer first for details on restrictions and possible fees.

**Altar Scrap**  
476-3306  
525 "N" Street  
Freon must be drained

**L & S Recycling**  
465-0002  
4945 North 56 Street  
Freon appliance accepted  
\*Please do not cut lines on appliances

**Northwestern Metal Company**  
464-6341  
3900 Industrial Avenue  
\$5.00 charge for freon



## 2. Construction and Demolition –

This includes concrete rubble, clean soil, brick or similar material. The private sector recycled 232,800 tons of concrete and asphalt last year. Construction and demolition may be taken to the 48 Street Transfer Station for a fee of \$4.00 per load. A few private contractors do accept debris (free of charge) that is clean of contaminants, such as scrap metal or dirt and separated by types. Please call first to make arrangements.

**Cathers Construction**  
6400 North 70 Street  
464-2113  
Concrete and asphalt only

**Pavers LCC**  
6201 South 57 Street, Suite F  
420-2889

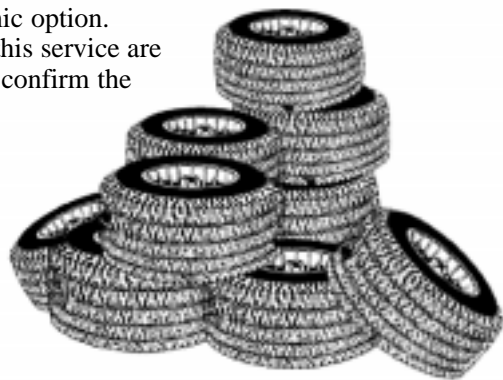
**Dobson Brothers Construction**  
410 South 7 Street  
474-5115  
Large quantities only, must be clean.

## 3. Tires –

Haulers are required to pay fees for disposing of the tire and this fee will be passed on to the resident. The public can dispose of tires (no more than 10 per load) at the 48 Street Transfer Station for a fee of \$3.00 per tire for cars and light trucks in addition to the regular fee. Again, private businesses will recycle car tires for a small fee and this is often the most economic option.

Private businesses that offer this service are listed below. Please call ahead to confirm the service is still offered.

**Graham Tire**  
6800 "O" Street  
or 5651 South 56 Street  
467-2555 or 421-1500  
\$2.00 per tire



## 4. Oil –

Oil is banned from the Landfill. Please do not dump used oil on the ground, in the storm drain, into the street or in the garbage. Protect your hands and skin from used oil. To recycle, oil must be free of contaminants

such as gasoline, water, antifreeze, dirt, leaves, debris and other solids. Drain your oil into a container that has a lid and is clearly labeled "used oil."

Containers should not hold more than 5 gallons of oil. Most oil recyclers will not take more than 5 gallons of oil per person per day. Remove the oil filter and puncture it, drain it into a container for 24 hours before placing it in the trash. After recycling, take the empty container home with you and reuse it or put it in the household trash.

Locations in Lincoln that accept waste oil from the public are listed below. Please call ahead and never leave oil at a site after hours.

**GM Auto Parts**  
(call first)  
5440 North 70 Street  
467-3531

**Gross Amoco Service**  
(call first)  
315 South 10 Street  
435-9185

**O' Reilly Auto Parts**  
120 West "O" Street  
475-1166  
No more than 5 gallons at any one O'Reilly Auto Parts Stores

1525 Cornhusker Highway  
475-1188

1101 Araphoe Street  
423-1222

1201 N. 48th Street  
466-4663

**Advanced Auto**  
222 North 48 or 3100 Cornhusker Highway  
465-5556 or 465-8188

**Texaco Xpress Lube**  
(call first)  
4800 Old Cheney or 5111 "O" Street  
421-9294 or 489-6354

**Valvoline Instant Oil Change**  
3500 Village Drive  
421-8089  
(Accepts 3 gallons free every 3 months or 50 cents a gallon any day)



## 5. Antifreeze recycling is preferred to disposal –

However, antifreeze can be poured down the **sanitary** sewer (but not in septic tank or storm drain). Dilute antifreeze with at least three gallons of water per gallon or partial gallon of antifreeze. Please, do not dispose of more than 10 gallons of water **and** antifreeze per day. Sites listed under oil collection might also take these materials. Please call ahead.

**Agee's Auto Repair**  
1323 "M" Street  
475-2252

**Cary's Radiator Shop**  
2128 North 68 Street  
464-8447



## 6. Propane and Gas Cylinder –

Recycling is preferred to disposal. Most scrap metal recyclers will accept gas cylinders such as small propane cylinders used for camp stoves, if the stem is removed. The following are private dealers who will accept cylinders. Please call ahead to make arrangements and check requirements. (Some dealers may have a fee)

**Lee's Propane Service Inc.**  
625 West "O" Street  
477-3235  
\*\$2.00 fee per container

**Ferrel Gas**  
3200 Superior  
477-5151  
\*Will not take disposable tanks

**Great Plain Service**  
642 Highway 6  
(800) 627-9908



# Household Hazardous Waste

Nearly everyone uses hazardous chemical products. Once you have no use for the product it becomes hazardous waste. The chemical characteristics that make these chemical products useful also make them dangerous when used, stored or disposed of improperly. Simply throwing the waste in the household trash or down the drain is not safe. Improper disposal can injure refuse haulers and waste handlers or potentially contaminate the ground water, surface water, soil and air.

The Lincoln-Lancaster County Health Department holds Household Hazardous Waste Collections in the summer months. This collection is for households in Lincoln and Lancaster County only (not for businesses). If you have any questions, call 441-8040.

Listed below are EPA-banned chemicals that should not be used. Although these chemicals are no longer sold in stores they may be stored in homes. In order to contain the potential harm of these chemicals, it is highly important that they are disposed of properly. The Lincoln-Lancaster County Health Department is the best vehicle for disposal. The following banned chemicals are accepted at the Household Hazardous Waste Collection.

- ✓ **DDT** – Anofex, Dedelo, Pentachlorin, Rukseam, Zerdane, Santobane, Chlorophenothane.
- ✓ **Chlordane** – Chlordan, Clordano, Chlortox, Belt, Niran, Gold Crest, C-100, Kilex Lindane, Ortho-Klor.
- ✓ **Silvex (2, 4, 5-TP)** – O-X-D, Weed-B-Gon (with silvex), Propan, Silvi-rhap, Sta-fast, Ded-Weed, Kuran.
- ✓ **2, 4, 5-T** – Brush-off, Ded-Weed, Brushkiller, Fortex, Reddox, Fence Rider, Trioxon, Veon.
- ✓ **PCP (Pentachlorophenol)** – Dovicide, Pentacon, Santobrite, Thompson's Wood Fix.

In addition to the banned chemicals, there are many household products containing chemicals that are hazardous to the environment

and dangerous if not disposed of properly. These items are accepted at designated household hazardous waste collection sites:

- ✓ **Heavy metals** –Wastes containing liquid mercury such as thermometers
- ✓ **Solvents** –Mineral spirits, turpentine paint strippers and thinners, oil-based paints, varnishes, stains, polishes and waxes.
- ✓ **Pesticides** –Weed killers, garden sprays, wood preservatives, roach powder, pet flea and tick products, rat poisons, etc. (includes EPA- banned chemicals listed above should not be used).
- ✓ **Items containing PCB's** –Ballasts from old fluorescent lamps and small capacitors from old appliances including radios, motors and televisions.

Please do not bring the following items to designated collection sites:

- ✓ Latex paint
- ✓ Fertilizers
- ✓ Fluorescent bulbs (recycle)
- ✓ Antifreeze (recycle)
- ✓ Medicines
- ✓ Used oil (recycle)
- ✓ Batteries (recycle)
- ✓ Explosives or ammunition (Fire Prevention Bureau)
- ✓ General household trash or business waste

Call 441-8040 for dates of the next Household Hazardous Waste Collection.



# Paint Exchange

A latex paint exchange occurs during specially designated collections, generally in the spring. Only good, useable latex paint is accepted at these collections. Please bring only containers that are at least half full. Call 441-8043 for more information about properly disposing of unuseable latex paint or donate paint to local drama clubs.

**To dispose of latex paint:** Keep lids off and let latex paint dry up then discard it into the trash. Be sure to remove lids so refuse haulers can see the paint has hardened. Large quantities of latex paint can be disposed of by pouring one inch layer of paint into a plastic lined box. When paint dries, pour another layer of paint on top. Do this until the container is empty. Water-based paint can be combined with an absorbent such as clay-based cat litter. When dry, this combination of absorbent and paint should be put in a trash bag and disposed of in the garbage. Latex paint can also be donated to local school drama departments or community playhouses. Paint brushes and rollers should be wiped off with a paper towel or rag then cleaned in the sink. Use ample water to dilute the paint. Put used paper towels in the garbage.



**To dispose of oil-based paints and paint thinners:** Contact the Lincoln-Lancaster County Health Department at 441-8040.

# Reminder

**You can minimize the human and environmental risks of household hazardous waste by:**

- ✓ Buy only what you need. Buy the right product for the task. Buy only the amount you need. Use up all of the product, if it is safe to do so.
- ✓ Read the label and try to identify the least toxic product.
- ✓ Use products according to the label, more is not always better.
- ✓ If you store potentially hazardous products, keep them in the original containers and out of the reach of children.
- ✓ Recycle items such as used oil and batteries.

For additional information on household hazardous waste, please contact the city HAZLINE at 441-6220. For hazardous waste generated by business of industry, please contact the Lincoln-Lancaster County Health Department at 441-6238 for assistance in the disposal or recycling of these wastes.

## Plastic codes

(on bottom of containers)



Polyethylene terephthalate (PET)  
Bottles recycled in Lincoln.



High density polyethylene  
Bottles recycled in Lincoln.



Vinyl/polyvinyl chloride (PVC)  
NOT recycled at drop-off sites.



Low density polyethylene  
NOT recycled at drop-off sites.



Polypropylene  
NOT recycled at drop-off sites.



Polystyrene  
NOT recycled at drop-off sites.



All other resins  
NOT recycled at drop-off sites.

# Yard and Tree Waste

Yard waste is defined as grass and leaves only. This includes crab grass and pine needles. Grass and leaves are banned from the Lincoln Landfill from April 1 through November 30 each year. During the growing season, grass and leaves can account for nearly 10 percent of Lincoln's total waste. Garden waste, weeds, brush and tree branches over one inch in diameter can be deposited in the regular trash throughout the year.

This material is diverted to the city's compost facility. Each spring the city makes a limited quantity of finished compost called LinGro Compost, available to the public (first come, first served basis) at the 48 Street Transfer Station. Residents may also obtain compost for a nominal fee from area landscapers, dirt contractors and garden centers. Call the Recycling Hotline, 441-8215, for more information on how to obtain compost.



**Yard waste disposal options:**

There are four methods for yard waste disposal: Mulching or composting on your property, hauling yard waste from your property to the 48 Street Transfer Station, hiring a lawn care service or removal of yard waste by a waste hauler.



**1. Compost** – Backyard composting is a good alternative to the special yard waste collection. The city maintains a backyard composting demonstration area located at University Place Park, every third Saturday, April through September, 50 and Colby Streets, near the maintenance area. Composting workshops are offered at various times and places. Free compost bins are distributed to those participating in the workshop. The workshops are produced by the Lincoln Recycling Office in cooperation with the Cooperative Extension in Lancaster County. For more information on how to compost, please contact the University of Nebraska Cooperative Extension in Lancaster County, call 441-7180.

**2. Disposal at 48 Street Transfer Station** – Residents may dispose of grass and leaves at the 48 Street Transfer Station. The yard waste must be free of garbage, litter and tree trimmings over one inch in diameter. Yard waste must be removed from plastic bags at the transfer station. A disposal fee is charged. Please call 441-7738 for more information.

**3. Hire a lawn care service** – Include yard waste management in your lawn care package.

**4. Private haulers** – Lincoln refuse haulers offer a separate weekly pick up of yard waste for a fee. Yard waste is taken to a city-operated compost site. Contact your hauler for more information.

**Reminders:**

- ✓ It is important that grass and leaves do not get mixed with regular trash. If someone mows or tends to your yard for you, please inform them of where to place yard waste.
- ✓ Yard waste in plastic bags is NOT allowed at the city's compost site (plastic will not decompose in the compost mixture). Use approved paper lawn bags, available from retailers, a cart provided by the hauler or 32-gallon trash can with a lid.
- ✓ Make sure your yard waste container is clean. Any household waste contaminates the compost and causes problems at the compost facility. Haulers can be fined up to \$50 if contaminants are found in the yard waste. This may be passed on to the consumer.
- ✓ Tree trimmings over one inch in diameter are collected with the regular trash.
- ✓ Garden waste, weeds, brush and other organics can be disposed of in the regular household trash.
- ✓ Grass and leaves can be mixed with regular household trash, December 1 through March 31.



# Locations to Pick Up or Purchase Compost

Eight area firms have LinGro compost available in bulk quantities. A listing of these firms are at the bottom of the page.

The City of Lincoln has limited quantities of the 1/2" screened LinGro compost available for distribution to the public at no cost each spring at the North 48th Street Transfer Station located at 5101 North 48 Street. This material is available on a first-come, first-served basis each spring.

Individuals and businesses may order a minimum of 20 cubic yards of 1/2" or 1/4" screened LinGro compost by contacting the City of Lincoln Recycling Office, 441-7043. There is a fee of \$3.00 per cubic yard for the 1/2" screened LinGro compost plus loading and delivery. There is a fee of \$7.00 per cubic yard for the 1/4" screened LinGro compost plus loading and delivery. Only limited quantities of the 1/4" screened LinGro compost is available.

Woodchip mulch is also available from the Public Works and Utilities Department. There is a charge of \$2.00 per cubic yard plus loading and delivery for the wood chips. Individuals may self-load wood chips at the North 48th Street Transfer Station located at 5101 North 48 Street.

For more information on Lincoln's LinGro compost or how to obtain LinGro compost call the Lincoln Recycling Office at 441-7043.

*Funding for this project is provided in part by the Nebraska Department of Environmental Quality, Waste Reduction and Recycling Incentive Grants Program.*

**Retail Outlets for Bulk Quantities of LinGro Compost**

**Landscape Materials**

General Excavating  
6701 Comhusker Highway  
Lincoln, NE 68507  
467-1627

All Care Grounds Management  
300 South Coddington Ave.  
Lincoln, NE 68522  
438-5115

**Garden Centers/Nurseries**

Campbell's Nurseries and Garden Centers  
7000 South 56 Street  
Lincoln, NE 68516  
423-1133

Nebraska Nursery and Color  
Gardens  
7801 Pioneers Blvd.  
Lincoln, NE  
489-6543

Nemaha Nursery  
430 West Pioneers Blvd.  
Lincoln, NE 68522  
434-5488

**Landscapers**

Naturescapes Inc.  
466-7771

Landscape by Leuders  
483-4588

Seeds of Life  
730-8733





# It's easy to recycle in Lancaster County

There are 5 newspaper only and 13 multi-material recycling drop-off centers located in Lincoln. And 5 multi-material sites in the County. Here's what materials are accepted at multi-material recycling sites:

## Who to contact

Ammunition and Explosives: Proper Disposal Bureau of Fire Prevention .....	441-7791
Antifreeze Recycling Lincoln Lancaster County Health Department .....	441-8040
Appliance Recycling Check scrap metal yards or call Lincoln Recycling Office .....	441-8215
Backyard Composting Lancaster County Cooperative Extension .....	441-7180
Battery Recycling Lincoln Lancaster County Health Department .....	441-8040
Business Recycling WasteCap of Lincoln .....	472-0888
Fluorescent Bulb Recycling Lincoln Lancaster County Health Department .....	441-8040
Garbage Collection Lincoln Solid Waste Management Association .....	423-8284
Hazardous Materials Management and Disposal Lincoln Lancaster County Health Department .....	441-6238
Household Hazardous Waste Recycling and Disposal Information Lincoln Lancaster County Health Department .....	441-8040
Hazline 24-Hour Recording .....	441-6200
Illegal Dumping Lincoln Police Department .....	441-7204
Lancaster County Sheriff .....	441-6500
Landfill Disposal Information Solid Waste Operations .....	441-7738
Neighborhood Clean-up Keep Lincoln and Lancaster County Beautiful .....	441-8035
Oil Recycling Lincoln Lancaster County Health Department .....	441-8040
Paint Disposal Lincoln Lancaster County Health Department .....	441-8040
Pollution Prevention for Businesses Lincoln and Lancaster County Health Department .....	441-6272
Residential Waste Reduction and Recycling Information; Lincoln Recycling Office .....	441-8215
Special Waste Permit Program for Businesses Lincoln Lancaster County Health Department .....	441-6238
Yard Waste Alternatives Lancaster County Cooperative Extension .....	441-7180

	YES	NO
<p>Newspapers</p>	<p>Inserts <b>OK</b></p> <p><i>Put newspapers in paper bag.</i></p>	<p>No other paper</p>
<p>Cardboard Boxes</p>	<p>Flatten cardboard Thin cardboard (i.e. cereal boxes) <b>OK</b></p> <p><i>All boxes must be flattened and placed inside recycling containers</i></p>	<p>No packing material No dirty boxes No waxed cardboard</p>
<p>Cans</p>	<p>All food and beverage cans</p> <p><i>Rinse clean. Separate aluminum and tin cans and place in separate recycling compartments.</i></p>	
<p>Glass Bottles and Jars</p>	<p>All food and beverage glass Green, brown and clear glass <b>OK</b> Labels <b>OK</b></p> <p><i>Rinse clean. Take off lids. Separate by color and place in separate recycling compartments.</i></p>	<p>No drinking glasses No window glass No dishes No light bulbs No ceramics</p>
<p>Plastic #1 &amp; #2 Bottles</p>	<p>All #1 &amp; #2 plastic Bottles Labels <b>OK</b></p> <p><i>Rinse clean. Take off lids and neck rings. Flatten bottles to conserve space in recycling compartments.</i></p>	<p>No snap top tubs (i.e. margarine or yogurt tubs) No motor oil containers No plastic toys No other plastic bottles</p>
<p>Residential Mixed Paper</p>	<p>Mail, magazines, office and school paper Telephone directories</p> <p><i>Put clean paper together in paper bag. Keep newspaper separate.</i></p>	<p>No tissue paper No milk cartons or juice boxes No paper plates No newspaper</p>

Contact 441-8215 for more information on proper separation of recyclables.

## Drop-Off Site Locations for Multi-Materials

Match the symbol on the map with the adjacent symbols for easy site location information.

- ▲ Aluminum cans
- ▲ Glass bottles
- Newspaper
- ▲ #1 & #2 Plastic bottles
- ▲ Tin cans
- Cardboard & Mixed paper

- ### North

  - 1 Southeast Corner N.W. Roundhouse Dr. & West "P" Streets
  - 2 UN-L Food Stores Warehouse 1200 No. 17th Street
  - 3 University Place 47th & St. Paul Streets
  - 4 70th & Vine Streets (Former St. Marks United Methodist Church)
  - 5 Sam's Club 27th & Superior Streets
  - 6 Russ's Market 63rd & Platte Avenue
  - 7 Centro Plaza 48th & "R" Streets
  - 8 Southeast Community College 88th & "O" Streets

### South

  - 9 Leon's Food Mart 32nd & South Streets
  - 10 Union College Athletic Field Parking Lot 53rd & Calvert
  - 11 East High School Seacrest Field Parking Lot 70th & "A" Streets
  - 12 Lincoln School of Commerce Parking Lot, 19th & "L" St.
  - 13 Trabert Hall Parking Lot 12th & South Streets
  - 14 Pepsi Cola Distribution Facility 1901 Windhoek Drive South Industrial Park

### Newspaper Only Drop-Off Sites

#### North

- 15 UN-L East Campus Parking Lot Behind Fire Station No. 2 33rd & Holdrege Streets

#### South

- 16 Sheridan Lutheran Church 3700 Sheridan Boulevard
- 17 Willard Community Center Folsom & West "B" Streets
- 18 All Saints Lutheran Church 8251 Pioneers Boulevard
- 19 Indian Village 13th & High Streets

### Additional Communities

- Bennet, Refuse Transfer Station
- Davey, Refuse Transfer Station
- Hickman, City Park
- Panama, Refuse Transfer Station
- Waverly, Waverly Plaza



- ▶ It is against the law to deposit any material other than what is accepted.
- ▶ Call 441-6500 if you see persons depositing material illegally.